

# SOULE NEWSLETTER

Vol. V, No. 2

April 1971

Page 53

Published by the SOULE KINDRED

P. O. Box 1146, Duxbury, Mass. 02332



SOULE LINEAGES ACCEPTED

By The  
GENERAL SOCIETY of MAYFLOWER DESCENDANTS

## SOULE LINEAGES ACCEPTED by the GENERAL SOCIETY of MAYFLOWER DESCENDANTS

Compiled by

Corinne Damon Hall (Mrs. Lester A. Hall), Historian General  
and

Colonel John Soule, Family Historian

There is broad familiarity with the MAYFLOWER INDEX. The original Volumes I and II, published by the General Society in 1932, comprised names taken from approved lineage papers on file with the Society prior to 10 Feb 1931. A revised Volume I & II and a Volume III were published in 1960. Errors and duplications early discovered in Volumes I and II were shown in a correction pamphlet published in 1939. These and subsequently found discrepancies were corrected in the revised Volume I and II of 1960. A concurrently published Volume III extends "The Index" to lineages accepted to 1 Jan 1960. Another correction pamphlet was published in 1964. Research incident to the compilation of the FIVE GENERATION PROJECT has detected a few additional discrepancies. These additions and corrections are underlined in the following compilation. Finally, the interim period has witnessed a marked increase in membership in the Society with many subsequent approvals. The following list now extends the coverage of the Soule names to 28 Feb 1971.

This compilation follows the Index plan. The number to the left is the "Index number". The number to the right is the parental number to allow the user to identify the parent. Three series of numbers are used - 1 to 39,465 from Index Volumes I and II, 39,466 to 77,722 from Volume III and a third series beginning with SA-1 indicating subsequently approved lineages. Arrangement is alphabetical by given name regardless of variations in surname spelling; also by birth date where identical given names are involved. Consequently, except for the SA-series, some lack of numerical sequence in the Index numbers will be noted. This minor inconvenience should be more than off-set by the inclusion of birth, marriage and death dates (year only) where known to-gether with indication of the generation in descent from George Soule of the Mayflower. Surnames are spelled, to the best of our knowledge, as the person concerned preferred - and it frequently was merely a matter of preference!

With publication of the original Index, the Society began accepting "Index numbers" as authorized references to be cited on applications for membership. The Soule SA-numbers may be used for the same purpose. This will simplify the preparation of applications for membership in the Society for those able to establish descent from any couple listed in this consolidated index. Those interested in securing more detailed information may obtain an extract copy of any lineage on file except those destroyed by fire in 1947 and those of active members which can not be released without the member's permission. Apply to the Historian General at Post Office Box 297, Plymouth, Massachusetts 02360. Requests for copies must be accompanied by the prescribed fee of \$2.00 for each lineage desired.

Dates shown in this compilation are frequently "qualified" as a1840 = ante 1840 or before 1840; c1840 = circa or about; p1840 = post or after 1840. Invariably 1748/9 or similar double dates reflect a combination of "Old Style" and "New Style" dating in or before 1752. In 1753 "New Years Day" became 1 Jan NS to replace 25 Mar OS. When qualified as c1744/8, a probable range of time in which the event occurred is indicated.

31,757 Aaron <sup>3</sup> Soule (c1664-p1752)	1699 Mary Wadsworth (1668-1741)	31,912
70,904 Aaron <sup>4</sup> Soule (1706-1783)	1)1727 Alice Peterson (c1708-a1733)	
	2)1733 Lydia Peterson (1713-1771)	31,757
	3)1775 Orphan (Waterman) Ford (c1711-1791)	
70,905 Aaron <sup>6</sup> Soule (1769-1841)	1797 Ruth Sampson (1782-1865)	31,782
31,758 Abbie Elizabeth <sup>9</sup> Soule (1877-19??)	1903 Charles Benjamin Gilmore (1877-19??)	32,025
23,703 Abby Parsons <sup>?</sup> Soule (1834-1877)	1856 Ezekiel W - ? - Mitchell (1817-1902)	Note-1
SA-1 Abel <sup>7</sup> Sowle (1810-1892)	1)1832 Luana Niles (1811-1859)	71,001
	2)1860 Jane Warner (c1822/3-p1880)	
31,759 Abigail <sup>4</sup> Soule (1716-1767)	1730 Perez Drew (1704-1774)	31,930
21,768 Abigail <sup>5</sup> Soule (1736-1823)	1)1755 George Little	
26,438 Abigail <sup>6</sup> Soule (1757-1842)	2)c1764 Luke Perkins (1733-1819)	Note-2
SA-2 Abigail <sup>6</sup> Soule (c1757- ? )	c1776 Reuben Peterson (1749-1845)	Note-3
	1776 Ignatius Loring (1755- ? )	32,066
31,760 Abigail Lovina <sup>8</sup> Soule (1845-p1913)	- Unmarried	32,003
31,761 Abishai <sup>4</sup> Soule (1708-1777)	1741 Abigail Delano (1725-1779)	31,931
31,762 Abner <sup>5</sup> Sowle (1748-1813)	1761 Dorcas Seabury (1724-1847)	31,806
SA-3 Abner <sup>6</sup> Sowle (1783-1825)	1803 Nancy Hazzard (1778-p1848)	31,762
70,906 Alanson/DeAlanson <sup>7</sup> Soule (1783-1851)	1806 Lois Bragg (c178?-1839)	31,886
SA-4 Albert D - ? - <sup>9</sup> Soule (1853-1920)	1)1874 Ida Stillman	SA-153
70,907 Alcey Ann <sup>7</sup> Soule (1804-1876)	2) ? - ? - (1857-1890)	
31,764 Alethea <sup>4</sup> Soule & 31,763 (1713/4-1747/8)	1822 Henry Winfrey Graves (c1794/5-1872)	71,053
70,908 Alexander <sup>7</sup> Soule (1795-1878)	1734 Allerton Cushman (1712-1777)	31,927 +26,434
31,765 Alfred <sup>7</sup> Soule (1798-1845)	1823 Hannah Draper (1797-1893)	31,898
31,766 Alfred Alonzo <sup>7</sup> Soule (1813-1884)	1825 Harriet Burnham (1805-1878)	31,783
70,910 Alfred Morton Gilmore <sup>10</sup> Soule (1879-1956)	1843 Prudence Dillingham Bradford (1822-1909)	32,004
	1)1907 Mary Emily Hilton (1879-1925)	70,909
	2)1927 Abigail Rice Knowles (1885-1956)	



70,909 Alfred <u>Tarbox</u> <sup>9</sup> Soule (1851-1883)	1878 Agnes Delano Gilmore (1853-1883)	70,958
31,767 Alfred Yale <sup>9</sup> Soule (1876-1950)	1902 Grace Yale Atwater (1875-1945)	32,041
31,768 Alice <sup>4</sup> Soule (1705-1731)	c1726 Richard Sisson, Jr. (1705-1790)	31,768
70,912 Alice <sup>4</sup> Soule (17??-a1776)	1732 Barnabas Perry (1707-a1750)	32,181
31,932 Alice <sup>6</sup> Soule (1763-18??)	1)1782 Josiah <sup>5</sup> Soule (1743-1806) 2)1807 John Hatch (17??-18??)	31,980
70,913 Alice Ann/Anna <sup>9</sup> Soule (1865-1939)	1888 Clark Herbert Henderson (1859-1921)	71,049
71,160 Alice Anne <sup>9</sup> Sowle (1867-p1928)	1889 Walter Michael Strayer (1864-1907)	71,172
SA-5 Alice Eva <sup>9</sup> Soule (1895-p1960)	1916 Carl Winfield Groves (1891-p1960)	SA-28
70,914 Alice Frances <sup>8</sup> Soule (1859-1912)	1875 Charles Ansel Houghton (1838-1921)	70,915
SA-6 Alice Laverne <sup>9</sup> Soule (1912-Live)	1938 Emerson Bruce Steele (1908-Live)	SA-73
70,911 Alice May <sup>9</sup> Soule (1921-19??)	1948 Samuel James McDonald (1914-19??)	71,066
SA-7 Almond <sup>6</sup> Soule (1773-1859)	1797 Mary "Polly" Kimball (1781-1828)	31,776
SA-8 Almond <sup>7</sup> Soule, Jr. (1799-1893)	1819 Dolly Kimble McClure (1799-1881)	SA-7
70,915 Alton Pelatiah <sup>7</sup> Soule (1830-1898)	1851 Izetta/Isetta Katon/Caton (1832-1897)	71,048
SA-9 Amasa <sup>7</sup> Soule (1804-1860)	1831 Sophia Low (1807-1900)	32,020
70,916 Ambrose Latten <sup>7</sup> Soule (1801-1857)	1)1824 Ruth (Paddock) Brown (1804-1851) 2)1851 Sophia M - ? - Everest (18??-1858)	31,938
31,769 Amy Dayton <sup>9</sup> Soule (1873-p1931)	1896 Howell Warrick Lownsberry (1872-p1931)	31,798
70,917 Angeline <sup>8</sup> Soule (1820-1855)	1839 Abraham Roberts (1816-1878)	70,955
70,918 Ann <sup>5</sup> Sowle (1734/5-1???)	1753 Job Davis (1731-1???)	<u>31,907</u>
31,771 Anna <sup>6</sup> Sowle & 31,770 (1775-1838)	1795 William Cook Manchester (1775-18??)	31,762
70,919 Anna <sup>7</sup> Sowles (1796-1852)	1817 Major Jacob Mott (1788-1849)	71,180
SA-10A Anna Effie <sup>10</sup> Soule (1870-1970)	1920 Edward Frederick Dreyer (1871-1941)	SA-136
70,920 Anna Rogers <sup>7</sup> Sowle (1819-1891)	1836 Paris Elkanah Buffum (1809-1891)	71,079
SA-10B Anne <sup>9</sup> Soules (1885-Live)	1905 James Lee McCaughan (1878-1966)	SA-44
31,772 Annie Grey <sup>7</sup> Soule (1856-1???)	1891 Samuel Lapham (18??-1???)	Note-4



31,773 Annie Laurie <sup>9</sup> Soule	1882 Dr. Augustus Spaulding Thayer	
(1858-1925)	(1875-p1906)	31,861
31,774 Annie Maria <sup>8</sup> Soule	1878 Frederick Henry Lewis	31,943
(1856-1939)	(1856-1898)	
SA-10C Annola Kay <sup>12</sup> Soules	Unmarried	SA-87
(1951-Live)		
SA-11 Anson <sup>6</sup> Soule	c1791/2 Lucinda French	SA-143
(1770-c1811)	(c1775-p1827)	
31,775 Anthony Tunias/Louis <sup>7</sup> Soule	1819 Emily Litchfield Bates	31,989
(1797-1868)	(1797-1879)	
SA-12 Ara James <sup>8</sup> Soule	1866 Prudence Ann Briggs	SA-145
(1838-1916)	(1840-1921)	
SA-13 Ara Jay <sup>10</sup> Soule	1926 Eleanor Mary Gunderson	SA-117
(1907-Live)	(1907-Live)	
70,921 Ardella May <sup>9</sup> Soule	1896 George Edwin Woodman	71,084
(1869-1934)	(1873-1947)	
70,923 Arthur Bradley <sup>8</sup> Soule	1898 Minnie Cecelia Miller	70,979
(1867-1959)	(1874-1959)	
70,922 Arthur Bradley <sup>9</sup> Soule	1931 June Yale Crouter	70,923
(1904-Live)	(1903-Live)	
31,776 Asa <sup>5</sup> Soule	1772 Olive Southworth	31,980
(1753-1831)	(1744-p1831)	
31,777 Asa <sup>6</sup> Soule	1784 Ruth Howland Stetson	31,859
(1765-1838)	(1763-1840)	
70,925 Asaph <sup>5</sup> Soule	1763 Mary Hudson	31,818
(1739-1823)	(1747-1820)	
70,924 Asaph <sup>6</sup> Soule	1)1803 Olive Bradford	
(1779-1812)	(1782-1805)	
	2)1807 Mary "Polly" Churchill	70,925
	(1786-1836)	
31,778 Augusta Prescott <sup>8</sup> Soule	1849 Alden Goudy	31,810
(1831-1907)	(1821-1897)	
70,926 Barbara Ann <sup>7</sup> Sowle	1852 Charles Brewster Cree	31,900
(1829-1927)	(1823-1899)	
SA-14 Barbara Jeannette <sup>12</sup> Soules	1959 Jimmy Blair Young	SA-98
(1940-Live)	(1935-Live)	
31,779 Barnabas <sup>4</sup> Soule	1737 Jane Bradbury	31,984
& 31,780 (1705-1770)	(a1718-p1760)	
31,781 Barnabas <sup>5</sup> Soule	1781 Jane Dennison	31,779
(1758-1823)	(1760-1825)	
70,928 Barnabas <sup>6</sup> Soule	1807 Mehitable Wyer	31,908
(1783-1815)	(1791-1857)	
70,927 Barnabas <sup>6</sup> Soule	1809 Hannah Blackstone	66,527
(1785-1816)	(178?-1819)	
31,785 Benjamin <sup>3</sup> Soule	c1693 Sarah Standish	31,912
(1666-1729)	(c1666-1740)	
31,786 Benjamin <sup>4</sup> Soule	1730 Hannah Whitman	31,785
& 31,787 (1705-1751)	(c1710-1788)	+32,665
31,784 Benjamin <sup>5</sup> Soule	1)c1745 Abigail Howland	31,854
(1728-p1779)	(1731-c1750)	
	2)c175? Elizabeth ( - ? - ) Davis	
	(1730-180?)	
31,782 Benjamin <sup>5</sup> Soule	1757 Mehitable Bonney	31,786
(1731-1816)	(1739-1801)	

70,930 Benjamin<sup>6</sup> Soule 17?? Dorcas Ward (?) 31,784  
(c1745/6-1???) (17??-1???)

NOTE: Your compilers are of the considered opinion that the validity of the approved lineage needs substantially more evidence to confirm. Ridlon (p675) says Dorcas Ward's husband Benjamin Soule was born 4-6-1761 which appears to preclude the placement heretofore accepted by the Society in view of the fact that there is now available substantial evidence that this man's putative mother died in or before 1750. The approximate birth date indicated above was based solely on the age needed to have placed him as a sibling of the previously accepted family. It may be pertinent that we do not, at this time, either accept or reject the possibility that may be the son of the indicated father and the latter's second wife Elizabeth ( - ? - ) Davis.

31,783 Benjamin <sup>6</sup> Soule	1791 Eunice Frost	31,908
(1770-1836)	(177?-1853)	
70,931 Benjamin <sup>6</sup> Soule	1822 Joanna York	31,783
(1796-1866)	(1809-1891)	
70,929 Benjamin <sup>8</sup> Soule	1841 Celia Creech/Creach	70,994
(1816-1893)	(1819-1909)	
31,788 Benjamin Franklin "Frank" <sup>7</sup> Soule		
(1810-1882)	1) 1843 Mary Pierson <u>Hand</u>	31,796
	(1823-1848)	
31,789 (For 2nd wife only)	2) 1855 Eunice T - ? - Soule	do
	(1831-1906)	
31,790 Benjamin True <sup>7</sup> Soule	1858 Margaret Cheney Smith	31,896
(1832-1912)	(1839-1886)	
4,156 Bennett <sup>7</sup> Soule	1853 Abigail Jane Bradford	Note-5
(1823-1863)	(1835-1927)	
71,161 Bernice Amanda <sup>9</sup> Sowle	1903 David Valentine Ramsay	71,172
(1873-19??)	(1878-1939)	
71,085 Bessie Amelia Rose <sup>10</sup> Soules	Richard Haladay Owen	71,090
(1895-19??)	1918 (1884-1951)	
70,932 Betsy <sup>7</sup> Soule/Soules	18-? Joseph Stewart	71,082
& 32,072 (1819-1848)	(1800-1882)	& 32,073
31,791 Betsy/Betty Maria <sup>8</sup> Soule	1850 John Byron Kelly	31,883
(1835-1913)	(1830-1866)	
31,792 Beza <sup>5</sup> Soule	1776 Zeruah/Zeryiah Cushman	31,818
& 9,945; 9,946 (1750-1835)	(1755-1843)	28,475
		9,694
31,793 Beza <sup>6</sup> Soule	1815 Mary Rawson	31,792
& 31,794 (1782-1825)	(1791-1869)	9,945
SA-15A Billie Gail <sup>11</sup> Soules	1952 Bobby Kay Day	SA-82A
(1931-Live)	(1926-Live)	
SA-15B Byron Avery <sup>9</sup> Soule	1921 Dorothy Houghton	SA-16
(1891-Live)	(1897-Live)	
70,933 Carlton Manson <sup>9</sup> Soule	1911 Mary Ethel Woodrow	70,999
(1884-1945)	(1887-Live)	
SA-15C Caroline <sup>8</sup> Soules	1859 William Michael Awalt	SA-112
(1840-1921)	(1834-1874)	
31,795 Charity <sup>7</sup> Soule	1794 Oliver Parker	31,891
(1770-1796)	(1766-1836)	
31,796 Charles <sup>6</sup> Soule	1796 Anne Kendall	31,983
(1768-p1809)	(c1776-1823)	

SOULE KINDRED NEWSLETTER	Vol. V, No. 2	April 1971	Page 59
71,448 Charles <sup>6</sup> Soule (1782-1868)	1)1809 Mercy Sprague (1789-1846)	Note-6	
	2)1847 Mary B. (Savary) Alexander (c1813/4-18??)		
31,797 Charles Carroll <sup>8</sup> Soule (1842-1913)	1878 Louisa Charles Farwell (1854-1924)	32,012	
70,934 Charles Dexter <sup>8</sup> Soule (1836-1919)	1870 Frances Marion Melville (1851-1928)	71.068	
70,935 Charles Edward <sup>8</sup> Soule (1841-1925)	1867 Lucinda Saxton Hall (1843-1926)	70,916	
70,936 Charles Henry <sup>8</sup> Soule (1875-p1953)	Unmarried	70,937	
SA-16 Charles M(cKinley?) <sup>8</sup> Soule (1862-1950)	18?? Ida May Ervin (1867-1936)	SA-23	
31,798 Charles Parsons <sup>8</sup> Soule (1851-1922)	1872 Mary Agnes (Herriot) Kennedy (c1845- ?? )	32,003	
70,937 Charles Rollin <sup>7</sup> Soule (1817-1897)	1857 Lucinda M - ? - Sherman (1836-1922)	71,057	
SA-17 Charles Watson <sup>8</sup> Sowles (1859-1943)	1882 Clara Elizabeth Chittenden (1861-1942)	SA-26	
31,800 Charles Williams <sup>6</sup> Soule (1762-1831)	1)1790 Dorothy "Dolly" Clark (c1776-1809)	31,985	
	2)1808 Chloe Preston (1785-a1831)		
31,799 Charles Williams <sup>7</sup> Soule (1792-1858)	1808 Dorcas Adsit (1788-1879)	31,800	
SA-18 Charles William <sup>7</sup> Soules (1796-1852)	1820 Almira Baker (1800-1882)	SA-144	
61,700 Charles Williams <sup>7</sup> Soule (1833-1899)	1855 Annie E - ? - Manson (1835-1913)	Note-7	
70,938 Clara Lyon <sup>9</sup> Soule (1882-p1952)	Unmarried	70,992	
SA-19 Claude Onel <sup>10</sup> Soule (1890-1944)	1916 Ellen Elizabeth Brown (1899-Live)	SA-132	
71,164 Claude Raymond <sup>9</sup> Sowle (1878-1954)	1900 Luetta Belle Scott (1879-19??)	71,168	
71,163 Claude Raymond <sup>10</sup> Sowle (1904-Live)	1)1927 Alice Loretta Coady (1900-1957)	71,164	
	2)1940 Marie C - ? - Wallbaum (1906-Live)		
71,162 Claude Raymond <sup>11</sup> Sowle (1928-Live)	1955 Kathryn Sharp Dix (1931-Live)	71,163	
SA-20 Clayton Everette <sup>10</sup> Soule (1897-Live)	1926 Theresa May Scott (1897-Live)	SA-46	
31,801 Clement Hall <sup>6</sup> Soule (1807-1871)	1831 Mary Jane Talbot (1811-1883)	31,781	
70,939 Cleone Hardyn <sup>10</sup> Soule (1887-Live)	1)1914 Sylvia Alice Donahue (1889-1964)	71,036	
	2)1969 Sarah Helen (John) Smith (1900-Live)		



31,802 Columbia <sup>7</sup> Soule (1815-1866)	1)1848 Rebecca Bradford (18??-1854)	
	2)1857 Lizzie Armstrong (1839-1911)	32,004
35,108 Comfort Seabury <sup>6</sup> Soule (1767-1853)	1785 John Tompkins (1760-1834)	Note-8
31,803 Constant Southworth <sup>5</sup> Soule & 31,804 (1744-1790)	Jemima Jenkins c1781/2 (17??-??)	31,980
31,805 Content <sup>6</sup> Soule (1782-1859)	1)c1800 Henry Vowers (1781-18??) 2)18?? George Babcock (1760-1850)	31,904
70,940 Corlena Mehitable <sup>8</sup> Soule (1840-1929)	1861 Edward H - ? - Rideout (1843-1908)	70,994
31,806 Cornelius <sup>4</sup> Soule (1712-1782)	1735 Sarah Dennis (1716-1801)	31,988
66,527 Cornelius <sup>5</sup> Soule (1743-1810)	1769 Abiel Prince (17??-1790)	Note-9
70,941 Cynthia <sup>6</sup> Soule (1770-1837)	1795 Ebenezer Wood (1771-a1862)	70,925
SA-21 Cynthia <sup>8</sup> Sowle (1828-1911)	1)18?? - ? - Fox 2)18?? Charles Lewis Clark (1827-1911)	SA-126
SA-22 Cythera Jeannette <sup>9</sup> Sowle (1860-1904)	1888 William E - ? - Blackman (1860-1937)	SA-43
70,942 Daisy Fontelle <sup>10</sup> Soule (1901-Live)	1921 Harold Eugene Andrew (1901-Live)	70,947
71,087 Daniel <sup>5</sup> Soules (1724-??)	17?? Hannah Sherman (17??-??)	31,854
31,807 Daniel <sup>6</sup> Soule (1757-1840)	1)1783 Sarah Cushman (1759-1814) 2)1818 Lucy (Sampson) Waterman (1761-1844)	31,835
71,086 Daniel <sup>6</sup> Soules (1760-1846)	1785 Achsah Elizabeth Hollingshead (1770-1862)	71,087
31,808 Daniel <sup>7</sup> Soule (1791-1828)	1817 Content Holmes (1790-1866)	31,807
70,943 Daniel <sup>6</sup> Soule (1796-18??)	1822 Deborah W - ? - Kent (1800-1862)	71,043
10,276 Daniel B - ? - <sup>8</sup> Soule (1834-1906)	1850 Virginia Hope Davis (1838-1920)	Note-10
31,809 Daniel Ebenezer <sup>8</sup> Soule (1818-1907)	1844 Eliza Phelps Mooney (1819-1893)	31,878
70,944 Daniel Lucius <sup>7</sup> Soule (1824-1909)	1859 Rowena Harriet Winsor (1838-1913)	70,943
SA-23 David <sup>7</sup> Soule (1824/5-1912)	1849 Louisa Altenberg (1828-1909)	70,965
SA-24 David Bradford <sup>11</sup> Soule (1916-Live)	1942 Muriel Haynes Sturgis (1917-Live)	70,910
SA-25 David Bradford <sup>12</sup> Soule (1945-Live)	1969 Donna Burkhardt (c1947-Live)	SA-24
31,810 David Farnham <sup>7</sup> Soule (1795-1860)	c1820 Elizabeth (McMurchie) Dole (1789-1865)	32,021

71,177 David Lewis <sup>8</sup> Sowles (1858-1916)	1896 Nellie May Towne (1876-1912)	71,182
SA-26 David Watson <sup>7</sup> Sowles (1811-1898)	1)1835 Mary A - ? - Hite (18??-1839)	
	2)1845 Sarah Jane Hunter (1827-1900)	SA-134
31,812 Deborah <sup>4</sup> Soule & 31,813 (c1718-1805)	1746 John Hunt (17??-a1805)	31,984
31,815 Deborah <sup>5</sup> Soule (1734-1805)	1753 Josiah Perkins, Jr. (1732-1811)	31,818
31,811 Deborah <sup>5</sup> Soule (1744-1825)	1763 Ambrose Hamilton, Jr. (1743-1795)	31,903
31,814 Deborah <sup>5</sup> Soule (1750-1803)	1771 Jacob Miller (17??- ?? )	31,892
SA-27 Delbert Leroy <sup>10</sup> Soule (1880-1953)	1905 Clara Belle Rogers (1891-p1967)	SA-80
SA-28 Delia Ann <sup>8</sup> Soule (1859-1927)	1875 Lewis Porter Soule (1855-1931)	71,061
31,816 Dewsbury/Duesbury <sup>5</sup> Soule (1760-1846)	1777 Seneca Wadsworth (1753-1829)	31,761
31,817 Dorcas <sup>6</sup> Soule (1766-1847)	1783 George Dennison (1762-1844)	31,908
71,165 Durfee <sup>7</sup> Sowle (1798-1864)	1821 Margaret Cosloman/Cosleman (1802-1877)	71,173
31,818 Ebenezer <sup>4</sup> Soule & 31,818 (1710-1792)	1733 Susanna Coomer (c1715-1807)	31,785
SA-29 Ebenezer <sup>5</sup> Soule (1737-1817)	1764 Silence Hudson (1740-1835)	31,818
31,820 Ebenezer <sup>6</sup> Soule (1750-1812)	1)c1769 Mercy Foote (c1748-1805)	31,784
	2)c1806 Abigail ( - ? - ) Lord (17??-18??)	
70,945 Ebenezer <sup>8</sup> Soule (1811-18??)	1829 Charlotte Edson (1811-1876)	32,044
SA-30 Ebenezer George <sup>8</sup> Soule (1805-1887)	c1830 Cornelia Elizabeth Hogeboom (1814-1893)	SA-49
71,166 Edna Lovejoy <sup>10</sup> Sowle (1914-Live)	Unmarried	71,167
70,946 Edna Olga <sup>10</sup> Soule (1898-Live)	1923 Clifford Sheldon Read (1895-1963)	70,983
70,947 Elbert Fuller <sup>9</sup> Soule (1873-1954)	1899 Daisy Agatha Campbell (1858-1959)	71,062
31,821 Eldora Maria <sup>9</sup> Soule (1849- ?? )	1874 Charles Eaton Bowen (1850- ?? )	32,024
70,948 Elias Brookings <sup>8</sup> Soule (1826-1875)	1851 Caroline Macomber Tarbox (1827-1911)	71,060
31,822 Elisha <sup>7</sup> Soule (1806-1871)	1826 Mary "Polly" Colegrove (1810-1885)	32,014
31,823 Eliza Ann <sup>7</sup> Soule (1809-18??)	1828 Daniel Grant ( ?? - ?? )	32,015
31,824 Eliza Marble <sup>7</sup> Soule (1821-188?)	1850 Leander P - ? - Gilman (18??- ?? )	31,794

31,826 Eliza Richmond <sup>8</sup> Soule & 31,825 (1817- ?? )	1835 Ephraim Briggs Thompson ( ?? - ?? )	31,890
70,951 Elizabeth <sup>2</sup> Soule (c1627/8- ?? )	c1667/68 Francis Walker, Sr. (a1638- ?? )	31,852
31,827 Elizabeth <sup>5</sup> Soule (1747-1834)	1765 Enos Chandler (1742-1785)	31,780
31,829 Elizabeth <sup>5</sup> Soule (1763-1844)	1788 James Earl/Earle (1765-1857)	32,055
70,949 Elizabeth <sup>6</sup> Soule (1775- ?? )	1793 Deacon John Cushing, Jr. (17??-18??)	31,908
70,950 Elizabeth <sup>7</sup> Soule (1775-1845)	a1804 Jeremiah Marks (1775-1840)	70,930
31,830 Elizabeth <sup>6</sup> Soule (c1784-1863)	1804 Moody Thurlow (c1784-1819)	31,906
31,828 Elizabeth <sup>6</sup> Soule (1794-1863)	1815 Shubael Dixon (1799-1860)	31,923
70,952 Elizabeth <sup>9</sup> Soule (1834- ?? )	18?? Alonzo Yager (18??- ?? )	70,945
31,831 Elizabeth Adelia <sup>8</sup> Soule (1818-1904)	1841 William Dutton Clark (1819-1853)	31,799
SA-31 Elizabeth Cynthia <sup>9</sup> Soule (1849-1933)	1876 George W - ? - Todd (1849-1904)	SA-52
13,551 Ella Irene Sophia <sup>9</sup> Sowles (1857-1943)	1878 Charles Orville Foster (1856-1931)	Note-11
70,953 Ella Pearl <sup>9</sup> Soule (1876-1909)	1899 Frank Willard Court (1875-p1958)	71,067
70,954 Ellen Wilson Preston <sup>7</sup> Soule (1825-1889)	Fanteroy Allen Carter ( ?? -1863)	71,053
SA-32 Elma Jane <sup>10</sup> Sowle (1909-Live)	1844 1950 Robert Lee Tindall (1910-Live)	SA-108
SA-33 Eloise Chittenden <sup>9</sup> Sowles (1894-1937)	1921 Alfred Kraemer (1880-1948)	SA-17
31,832 Emily <sup>8</sup> Soule (1826-1901)	1846 James Arnold Nye (1823-1894)	31,765
SA-34 Emily Louise <sup>9</sup> Soule (1887-p1960)	1908 Horace Mitchell Yorke (1853-1930)	SA-28
SA-35 Emma Benson <sup>9</sup> Soule (1871-1925)	1890 Eugene Castle Allen (1868-1935)	SA-155
SA-36 Emory Watson <sup>8</sup> Soule (1836-1913)	1864 Mary Elizabeth Secrist (1848-1921)	SA-78
31,833 Enos <sup>6</sup> Soule (1792-1869)	1817 Sarah Pratt (1798-1881)	31,781
31,835 Ephraim <sup>5</sup> Soule & 31,834 (1729-1817)	1)1757 Rebecca Whitmarsh (1729-1805) 2)1806 Sarah (Bonney) Harlow (1731-1819)	32,068
70,955 Ephraim <sup>7</sup> Soule (1784-1841)	1809 Sarah "Sally" Colburn (1786-1880)	31,807
70,956 Number not used in Mayflower Index		
31,836 Ephraim Leech <sup>7</sup> Soule (1803-1856)	1824 Abigail Kinne (1804-1856)	31,938



SOULE KINDRED NEWSLETTER	Vol. V, No. 2	April 1971	Page 63
31,837 Erastus <sup>8</sup> Soule (1807-1892)	1)1840 Sarah Schriver (18??-1851)	32,044	
SA-37 Estella <sup>10</sup> Soule' (1861-1949)	2)1853 Emeline Barnard (18??-1892)	SA-136	
31,838 Esther/Hester <sup>6</sup> Soule (1785-1862)	1890 Frank Whitney Hooper (1860-1947)	31,781	
SA-38 Esther <sup>10</sup> Soules (1892-Live)	1805 Clement Jordan ( ?? - ?? )	SA-156	
SA-39 Esther Lucy <sup>9</sup> Soule (1904-Live)	1925 Basil Gordon Whitlock (1886- ?? )	SA-83	
70,957 Ethel I - ? - <sup>10</sup> Soule (p1911- ?? )	1923 Elroy Heyer Gross (1900-Live)	70,933	
31,839 Etta Estelle <sup>8</sup> Soule (1868-p1941)	?? Ralph C - ? - Johnson ( ?? - ?? )	31,921	
SA-40 Eugene Beauharnois <sup>7</sup> Soule (1836-1914)	1896 Grier Melanethan Orr (1856-p1941)	70,980	
31,840 Eunice <sup>5</sup> Soule (1735-1805)	1859 Jane A - ? - Lewis (1839-1913)	32,068	
31,841 Ezekiel <sup>4</sup> Soule (1710/11-1799)	1761 Seth Tinkham (c1735-1808)	31,930	
SA-41 Ezekiel <sup>5</sup> Soule (1752-1843)	1732/3 Hannah Delano (1718-1768)	31,926	
70,958 Faithful "Faith" <sup>6</sup> Soule (1784-1864)	1777 Clynthia Wadsworth (1756-1827)	70,985	
20,259 Fanny <sup>7</sup> Soule (1787-1876)	1809 Nathan Fuller (1785-1875)	Note-12	
70,959 Fayette Fletcher <sup>9</sup> Soule (1877-1946)	1799 Howland Keen (17??-18??)	70,935	
31,842 Florence Alice <sup>9</sup> Soule (1879-19??)	1901 Isabel Atkinson (1880-1964)	32,041	
31,843 Florence Dorcas <sup>9</sup> Soule (1886-p1915)	1902 Bela Northcutt Barnes (1883-19??)	32,025	
SA-42A Florence Evelyn <sup>8</sup> Soule (1866-1961)	Unmarried	31,943	
31,844 Frances <sup>9</sup> Soule (1889-p1911)	1897 Henry Porter Smith (1866-1935)	31,916	
31,846 Frances Agnes <sup>9</sup> Soule (1898-19??)	1910 Ralph Damon Emerson (1880-p1911)	32,040	
31,845 Frances Euphemia <sup>8</sup> Soule (1871-p1903)	?? ??	31,845	
SA-42B Frances Janet <sup>11</sup> Soules (1932-Live)	1901 Josiah Onslow Stevens (1860-p1903)	SA-97	
70,960 Frances Katherine <sup>9</sup> Soule (1914- ?? )	1959 Bill Gus Frame (1930-Live)	32,051	
31,847 Francis Asbury <sup>7</sup> Soule (1817-1897)	?? ??	31,990	
	1843 Susan Allen Sprague (1821- ?? )		

SA-43 Francis M - ? - <sup>8</sup> Sowle (1833-1913)	1859 Elizabeth C - ? - McMahan (1835-1922)	SA-1
SA-44 Francis Marion <sup>8</sup> Soules, Sr (1837-1908)	1859 Sarah Ann Awalt (1841-1923)	SA-112
SA-45 Francis Marion <sup>9</sup> Soules, Jr (1865-1933)	1884 Florence A - ? - Bradley (1863-1920)	SA-44
70,961 Francis Tripp <sup>7</sup> Sowle (1808-1901)	1)1829 Susan Maria Vroman/Vrooman (1808-1845)	71,001
	2)1846 Henrietta L - ? - Holdridge (1827-1848)	
	3)1849 Barbara A - ? - McMahan (1823-1891)	
31,848 Francis Wallace <sup>7</sup> Soule (1845-1923)	1870 Idella Page (1841-1929)	31,801
31,849 Frank <sup>8</sup> Soule & 1,678 (1845-1913)	1)1872 Ella Etta Bacon (1850-div1896)	31,788
	2)1897 Adelaide Sherwood Worden (1869-p1913)	
31,850 Frank Channing <sup>9</sup> Soule & 14,795 (1861-1942)	1884 Grace Gere (1862-1935)	31,996
70,962 Frank Gookins <sup>8</sup> Soule (1858-1926)	1888 Helen Jackson Shipman (1861-1931)	70,996
70,963 Frank Holbrook <sup>9</sup> Soule (1899-Live)	1939 Louise Gertrude Thomas (1897-Live)	71,038
70,964 Frank Lewis <sup>10</sup> Soule (1887- ?? )	1918 Helen Josephine Harrison ( ?? - ?? )	31,851
31,851 Frank Marcellus <sup>9</sup> Soule (1856-1931)	1884 Mary Chester Batchelder (1859- ?? )	32,054
SA-46 Franklin "Frank" Clinton <sup>9</sup> Soule (1871-1929)	Charlotte Bell Miller (1879-1955)	71,049
74,584 Frederick Augustus <sup>7</sup> Sowle (1831-1906)	1853 Abbie Parker Vincent (1834-1875)	Note-13
71,167 Frederick Harrison <sup>9</sup> Sowle (1888-1965)	1913 Florence Rumney (1892-Live)	71,170
13,947 Freeman <sup>6</sup> Soule (1807-1866)	1841 Nancy Freeman (1812-1957)	Note-14
70,965 Gardner <sup>6</sup> Sowle/Soule & 61,507 (1794-1879)	c1819 Abigail A - ? - Curtis (1798-1874)	31,899
SA-47 Gary McKelvey <sup>11</sup> Soule (1938-Live)	1965 Priscilla Bell Mitchell (1936-Live)	SA-13
31,852 George <sup>1</sup> Soule (c1597-1680)	c1623 Mary Bucket/Becket (c1600-1670)	Mayflower
31,853 George <sup>2</sup> Soule (1639-1704)	166? Deborah - ? - (c164?-c1708/10)	31,852
31,854 George <sup>4</sup> Soule (1695-1784)	1719 Lydia Howland (1701-p1784)	32,056
31,856 George <sup>4</sup> Soule (1709-1793)	1)1730 Avis Tibbetts (1710-1756)	31,968
	2)1758 Alice Davis (17??- ?? )	

SOULE KINDRED NEWSLETTER		Vol. V, No. 2	April 1971	Page 65
SA-48 George <sup>6</sup> Soule	(1748- ?? )	c1754/5 Mary Bush	(1743- ?? )	31,784
SA-49 George <sup>7</sup> Soule	(1770-1862)	1796 Mary Bergh	(17??-1835)	SA-48
71,468 George <sup>6</sup> Soule	(1779-1820)	1806 Ruth Sprague	(1785-1836)	Note-15
SA-50 George <sup>7</sup> Soule	(1806-1874)	1831 Mary Harlow Wood	(1809-1903)	SA-139
SA-51 George <sup>7</sup> Soule	(1806-1845)	1833 Abbie Goodwin	(1811-1903)	31,987
SA-52 George <sup>8</sup> Soule	(1819-1868)	c1842 Lucy Ann Plocker	(1812-1886)	31,882
31,855 George <sup>7</sup> Soule	(1823-1867)	1858 Caroline Rebecca Litchfield	(1838-1932)	31,794
SA-53 George <sup>10</sup> Soule	(1859-1900)	1889 Mary Elizabeth Traphagen	(1856-1945)	SA-136
70,967 George Alan <sup>10</sup> Soule	(1892-1967)	1925/6 Ruth Georgia Knudsen	(1900-Live)	71,179
70,966 George Alan <sup>11</sup> Soule, Jr.	(1930-Live)	1961 Carolyn Richards	(1936-Live)	70,967
70,968 George Batchelder <sup>10</sup> Soule	(1885- ?? )	1915 Harriet Beecher Devan	(1891- ?? )	31,851
71,178 George David <sup>8</sup> Sowles	(c1839-1902)	1864 Elvira A - ? - Mott	(c1845-1872)	71,183
70,969 George Frederick <sup>8</sup> Soule	(1825-1879)	1846 Eliza E - ? - Lamb	(c1825-1901)	71,022
71,179 George Henry <sup>9</sup> Sowles/Soule	(1844-1911)	Isabelle Eliza Mooney	(1848-1885)	
		1)1866		
		2)1891 Margaret Annetta Mitchell	(1868-1951)	71,185
SA-54 George Hodges <sup>10</sup> Soule	(1918-Live)	1942 Jean Millicent Conder	(1919-Live)	SA-150
SA-55 George Lewis <sup>8</sup> Soule	(1832-1911)	1)1856 Anna Susan Cathcart	(1833-1868)	
		2)1871 Amanda Earle Bartlett	(c1847-1926)	SA-51
SA-56 George Nelson <sup>7</sup> Soule	(1820-1883)	1842 Sarah Elizabeth Brewer	(1819-1896)	31,783
SA-57 George Standish <sup>11</sup> Soule	(1936-Live)	Unmarried		SA-20
31,857 George Thomas <sup>8</sup> Soule	(1810-p1885)	1849 Caroline Amelia Soule	(1827-1898)	32,067
SA-58 George Willard <sup>8</sup> Soule	(1836- ?? )	1862 Martha Storrs Waterman	(1836-1920)	SA-51
SA-59 Gertrude Frances <sup>10</sup> Soule	(1883-Live)	Unmarried		SA-156
31,858 Gertrude Lydia <sup>9</sup> Soule	(1883- ?? )	1914 George Rogers/Rodgers	(18??-19??)	32,025
31,860 Gideon <sup>4</sup> Soule	(17??-p1750)	1738/9 Mercy Sylvester	(17??-a1752?)	31,984



31,859 Gideon <sup>5</sup> Soule (1739/40-1792)	1763 Ruth Harden (17??-p1792)	31,860
SA-60 Gideon Lane <sup>7</sup> Soule (1796-1879)	1822 Elizabeth Phillips Emery (1794-1883)	71,041
31,861 Gilbert <sup>8</sup> Soule (1820-1884)	1853 Eliza Ann Mills (1829- ?? )	31,810
SA-61 Grace Elizabeth <sup>9</sup> Sowle (1887-Live)	1907 Charles Thomas Broadbent (1884-1951)	71,170
31,863 Hannah <sup>4</sup> Soule & 31,864 (1696/7-1776)	1718 George Sampson (1690/1-1774)	31,785
31,865 Hannah <sup>5</sup> Soule (1722- ?? )	1750 Thomas Weaver (1725- ?? )	32,057
70,970 Hannah <sup>5</sup> Soule (1742-1820)	1)1758 Jonathan Waterman (1730-1764)	31,786
	2)1765 Timothy Ripley, Jr. (1742-1835)	
31,862 Hannah <sup>6</sup> Soule (1761- ?? )	1)1781 Isaac Bonney (1757-1789)	
	2)17?? Silas Lambert (17??- ?? )	31,782
70,971 Hardyn Benton <sup>11</sup> Soule (1916-Live)	1942 Catherine Elizabeth Bendix (1915-Live)	70,939
70,972 Harmon <sup>7</sup> Soule (1797-1877)	1)c1832 Mary "Polly" Flint (1801-1836)	71,077
	2)1836 Eliza Flint (1807-1843)	
	3)c1845 Mary Ann Beardsley (18??- ?? )	
31,866 Harriet Ellen <sup>7</sup> Soule (1816- ?? )	1839 Edward Harding Melcher (1811-1892)	32,015
70,973 Harriet Rainsford Soule (1835- ?? )	1867 Lewis Porter (1826- ?? )	71,044
31,867 Harriette/Harriet M - ? - <sup>9</sup> Soule (1864-1950)	Unmarried	31,937
SA-62 Harriette Melissa <sup>7</sup> Sowle (1817-1895)	1833 James Benjamin Ewers (1811-1872)	71,001
SA-63 Harrison <sup>8</sup> Soule (1836-1884)	1)1859 Adeline O - ? - Sanford (c1841- ?? )	71,007
	2)1877 Annie D - ? - Billings (c1843-1911)	
SA-64 Harvey <sup>7</sup> Soule (1812-1900)	1)1842 Priscilla Pierce (1819-1863)	
	2)1864 Susan (Lewis) Simmons (1839-1892)	71,448
SA-65 Harvey Albion <sup>8</sup> Soule (1867- ?? )	1894 Abbie Adams Clark (18??- ?? )	SA-64
71,168 Harvey McKentyre <sup>8</sup> Sowle (1846-1931)	1)1869 Luella Marilla Jackson (1850-1876)	
	2)1878 Edna King Smith (18??-1904)	71,171
31,868 Hattie Eliza <sup>8</sup> Sowle (1862- ?? )	1884 Henry M - ? - McDewell (18??- ?? )	31,875
71,169 Hazel Elizabeth <sup>10</sup> Sowle (1917-Live)	1942 Clinton Stuart Smith (1920-Live)	71,167
SA-66 Helen Barbara <sup>9</sup> Soule (1898-Live)	1940 Frederic Kervan Gammons (1907-Live)	SA-142

SOULE KINDRED NEWSLETTER	Vol. V, No. 2	April 1971	Page 67
SA-67 Helen Elizabeth <sup>8</sup> Soule (1851-1926)	1878 Webster Jacob Alger (1853-1945)	SA-23	
31,869 Helen Frances <sup>9</sup> Soule (1864-1954)	Unmarried	32,024	
70,974 Helen Shipman <sup>9</sup> Soule (1901- ?? )	1928 Theodore Norman Hans (1897- ?? )	70,962	
SA-68 Henry <sup>4</sup> Sowle (c1721-1804)	1743 Barbara Cottrell (c1723- ?? )	31,993	
SA-69 Henry <sup>6</sup> Sowle (1788-1833)	1810 Esther ( - ? - ) Lawrence (1792-1875)	SA-111	
70,975 Henry <sup>7</sup> Soule & 47,511 (1808-1889)	1834 Zylpha Wadsworth Cooke (1811-1885)	71,059	
31,870 Henry Douglas Bacon <sup>9</sup> Soule (1888-		Note-16	
SA-70 Henry Merton <sup>9</sup> Soule (1881-1963)	1903 Jewel M - ? - Brayman (1876-1954)	SA-127	
SA-71A Henry Watson <sup>9</sup> Soule (1874-1953)	1903 Alice Caroline Steed (1882- ?? )	SA-36	
70,976 Henry Wood <sup>7</sup> Sowle (1853-1907)	1856 Rosina Shaw Bailey (1838-1897)	70,995	
SA-71B Hepzibah <sup>8</sup> Sowle (c1826-a1850)	1844 Lewis Snyder (1821-1879)	SA-88	
70,977 Herbert Freeman <sup>8</sup> Sowle (1862-1932)	1886 Mabel C - ? - Frost (18??-1952)	70,976	
SA-72 Herbert Freeman <sup>10</sup> Soule (1914-1969)	19?? Dorothy Ruland (19??-Live)	SA-152	
SA-73 Herbert Haskell <sup>8</sup> Soule (1860-1942)	1907 Alice May Burdon (1880-1946)	SA-40	
71,170 Herbert Vincent <sup>8</sup> Sowle (1860-1937)	1886 Hattie (Cathalena) Lovejoy (1862-1942)	74,584	
71,171 Hiram Allen <sup>7</sup> Sowle 1) c1839/40 (1818- ?? )	Harriet Evangeline Colson (c1820-c1852)	71,175	
	2) 1855 Lucy A - ? - (Hammond) Lewis (1831-1881)		
	3) 18?? Phebe Ann Sowle (1829-1908)		
70,979 Hiram Allen <sup>7</sup> Soule (1834-1892)	1857 Mahala Trowbridge Buck (1837-1920)	70,980	
SA-74 Hiram Allen <sup>8</sup> Soule (1853-1929)	1) 1897 Julia Ellen Ryan (1865-1900)	SA-86	
	2) c1906 Lucy Anastasia Ryan (1886-1944)		
70,980 Hiram Barlow <sup>8</sup> Soule (1790-1847)	1816 Lucretia Olmstead (1795-1877)	71,002	
32,220 Hiram Benjamin <sup>7</sup> Sowles (1808-1872)	1836 Mary A - ? - Gadcomb (181?-1878)	32,221	
70,978 Hiram Manchester <sup>5</sup> Sowle (1774-1822)	1798 Lydia Earle (1780-1852)	32,055	
31,871 Horace Bartol <sup>7</sup> Soule (1830-1896)	1) 1857 Emeline F - ? - Talbot (1840-1888)	31,833	

31,871	Continued	2)1894 Anna Florence Dolley (18??- ?? )	
31,873 Horace Homer <sup>7</sup> Soule & 31,874 (1827-1908)		1850 Elizabeth Cushing Hobbs -1906)	32,011
31,872 Horace Homer <sup>8</sup> Soule (1866-1920)		1902 Adeline Merritt Train	31,873
70,981 Horace Homer <sup>9</sup> Soule (1904-Live)		Genevieve Mitchell	31,872
SA-75A Horace William <sup>8</sup> Sowles (1825-1895)		1849 Abigail Paddock Dodge (1825-1890)	SA-85
31,875 Horatio Sprague <sup>7</sup> Soule (1823-1895)		1846 Eliza Mercer Henderson (1826-1903)	32,022
65,374 Hortense Josephine <sup>?</sup> Soule (1849-1939)		1869 Charles Arthur Pembroke (1846-1930)	Note-17
31,877 Howard Wallace <sup>8</sup> Soule (1876-1949)		1902 Corinne Marjorie Wise (1876-Live)	31,848
31,876 Howard Wallace <sup>9</sup> Soule (1905-Live)		19 Aileen Riggin	31,877
31,878 Howland <sup>7</sup> Soule (1793-1826)		1810 Sarah "Sally" Downing (17??-18??)	31,820
SA-75B Hugh <sup>9</sup> Soules (1875-1920)		1899 Ida Louise Light (1881-1962)	SA-44
31,879 Huldah <sup>6</sup> Soule (1767-18??)		1788 Moses Joy (1867-1811)	31,782
70,982 Huldah <sup>6</sup> Soule (c1765- ?? )		1780 Joel Card (1756-1840)	31,915
70,983 Humphrey Cousens <sup>9</sup> Soule (1870-1953)		1897 Olga Emma Berndt (1875-1913)	70,997
31,880 Ida Fulton <sup>8</sup> Soule (1868-19??)		1)1889 C - ? - A - ? - Howes (18??-1897)	
SA-76 Ida Lamb <sup>9</sup> Soule (1872-1957)		2)1900 Albert Henry Kuhn (1860-19??)	31,982
31,881 Ida Philbrick <sup>9</sup> Soule (1875-19??)		1900 Henry G - ? - Prophet (1873-1923)	SA-55
31,884 Isaac <sup>4</sup> Soule & 31,885 (c1701/2-1775)		1)1899 David Hancock (18??-19??)	
SA-77A Isaac <sup>5</sup> Soule (1732-1808)		2)1910 William Freitas (1878-19??)	32,025
31,886 Isaac <sup>6</sup> Soule (1746- ?? )		1725 Agatha Perry (1703-1775)	31,984
31,882 Isaac <sup>7</sup> Soule (1774-1864)		1)1764 Lydia Thompson (1730-1771)	
SA-77B Isaac <sup>6</sup> Sowle (1775-1853)		2)1772 Lydia (Randall) Wood (1741-1827)	70,986
31,883 Isaac <sup>7</sup> Soule (1788-1860)		1774 Abigail Porter (1750- ?? )	31,784
		1803 Cynthia Carter (1780-1841)	31,886
		c1790s Hepzibah Allen (c1772-1849)	71,003
		1)c1810 Sarah Chase (1791-1828)	31,820



31,883	Continued	2)c1829/30 Leah Brownell	
SA-78 Isaac <sup>7</sup> Soule	(1796-1874)	1830 Elizabeth Cravens Smith	SA-1
31,887 Jabez <sup>5</sup> Soule	(1721-1751)	1745 Abigail Bennett	32,068
31,888 Jabez <sup>6</sup> Soule	(1752-1827)	1779 Lucy Morton	32,066
31,890 Jabez <sup>7</sup> Soule	(1786-1879)	1816 Susanna Richmond	31,888
& 31,889			
70,986 Jacob <sup>4</sup> Soule	(1702-1744)	1731 Mary Thomas	70,988
70,985 Jacob <sup>5</sup> Soule	(1736/7-1823)	1762 Sarah Shaw	70,986
70,984 Jacob <sup>5</sup> Sowle	(c1743-1822)	1766 Meribah Lewis	71,080
31,891 Jacob <sup>6</sup> Soule	(1747-1824)	1769 Hannah Thomas	31,887
70,988 James <sup>3</sup> Soule	(1659-1744)	1693 Lydia Thompson	31,912
31,892 James <sup>4</sup> Soule	(1711-1793)	1744 Deborah Holmes	31,913
& 31,897			
70,989 James <sup>5</sup> Sowle	(1742-1786)	1)1765 Mary White	71,000
31,895 James <sup>5</sup> Soule	(1747-1794)	2)1781 Jemima (Coffin) Russell	
70,987 James <sup>5</sup> Soule	(1754-1846)	1773 Abigail(Seaver) Bosworth	31,926
31,898 James <sup>6</sup> Soule	(1759-1829/30)	1778 Martha Curtis	31,902
31,899 James <sup>5</sup> Sowle	(1761-1821)	1788 Molly "Polly" Holmes	31,835
31,896 James <sup>6</sup> Soule	(1784-1869)	1789 Patience Macomber	32,055
31,894 James <sup>6</sup> Soule	(1795-1877)	1820 Mary Bradford	31,895
& 31,893		1819 Leah Bennett	31,910
31,900 James <sup>6</sup> Sowle	(1798-1890)	1824 Nancy Wellman	31,899
SA-79A James Fowler <sup>10</sup> Soules	(1888-Live)	1909 Margarette Emily Boykin	SA-45
SA-79B James H - ? - ? Soule	(c1830 - ?? )	1854 Mercy Bayley Harrub	Note-18
SA-79C James Henry <sup>11</sup> Soules	(1915-Live)	1941 Dorrace Maxine Harris	SA-79A
SA-80 James Spooner <sup>9</sup> Soules	(1848-1934)	c1873 Helen Eunice Cushman	SA-146
31,901 Jane <sup>5</sup> Soule	(1755- ?? )	1775 George Bartol	31,780
27,877 Jane <sup>7</sup> Sowles	(1814-1878)	1)1834 Henry L - ? - Reynolds	
		2)1838 Philo Weeks	32,221

70,990 Jane Augusta <sup>7</sup> Soule (1809- ?? )	c1830 James Madison Clark (1809- ?? )	71,006
31,902 Jedediah <sup>4</sup> Soule & 31,903 (1720-	1741 Tabitha Bishop (1718-	31,984
70,991 Joanna <sup>5</sup> Soule (1756-1847)	1777 Lot Stetson (1751-1811)	31,926
SA-81 Joe Carlton <sup>12</sup> Soules (1942-Live)	1962 Marie Fite (1941-Live)	SA-98
31,912 John <sup>2</sup> Soule (1632-1707)	1)c1654 Rebecca Simmons (16??-p1674)	31,852
31,911 do	2)c1678 Rebecca (Nash) Sampson (1640-1735)	
31,913 John <sup>3</sup> Soule (1674-1743)	1701 Martha Tinkham (16??-1758)	31,912
31,907 John <sup>4</sup> Soule (1707-1771)	1733 Miribah Holloway (17??-p1772)	31,988
31,909 John <sup>4</sup> Soule (1709-1734)	1730 Mabel Partridge (17?? - ?? )	31,930
31,915 John <sup>5</sup> Soule & 31,914 (c1736/7-1795)	1)1759 Patience Wormald (1737-1777)	31,841
	2)1780 Martha (Card) Farnham (c1743-1831)	
31,908 John <sup>5</sup> Soule (1740-p1814)	1)1763 Elizabeth Mitchell (1747-1794)	31,779
	2)1795 Elizabeth (Reed) Stanwood ( ?? -1800)	
	3)1814 Chloe Josselyn (17??-18??)	
31,904 John <sup>5</sup> Soule (1741-1807)	c176? Mabel Hoag (17??- ?? )	31,856
31,905 Voided number		
31,910 John <sup>5</sup> Soule (1748-1815)	1782 Joanna Perkins (1761-1837)	31,897
31,906 John <sup>5</sup> Soule (1757-1834)	1783 Deborah Bowker (c1762-1855)	31,761
71,180 John <sup>6</sup> Sowles & 70,993 (1772-1812)	1794 Sylvia Marvin (1776-1830)	32,223 &32,061
70,994 John <sup>7</sup> Soule (1792-1875)	1815 Mary D - ? - True (1794-1869)	31,783
70,995 John <sup>6</sup> Sowle (1809-1882)	1832 Mary D - ? - Wood (1810-1856)	70,978
70,992 John <sup>8</sup> Soule (1835-1895)	1860 Orintha Hamilton (1839-1931)	71,052
SA-82A John B - ? - <sup>10</sup> Soules (1900-1957)	1918 Gladys Maurene Hamilton (1902-Live)	SA-45
70,996 John Babson Lane <sup>7</sup> Soule (1815-1891)	1)1840 Mary L - ? - Stevens (18??-1848)	
	2)1849 Carolyn E - ? - Gookins (c1837-1891)	71,041
SA-82B John Cole <sup>7</sup> Soule (1819-1876)	1846 Lucy Ann Benner (1823-1908)	SA-91
70,997 John Cousens <sup>8</sup> Soule (1850-1927)	1869 Lucinda Allen (1851-1926)	71,054

70,998 John Edward <sup>10</sup> Soule (1902-Live)	1934 Adelia Elsa Maria Erme- linda Rosasco (1901-Live)	70,959
31,916 John Fensley <sup>8</sup> Soule (1857- ?? )	188? Ruth (Schofield) Dent (18??- ?? )	31,928
SA-83 John Frank/Franklin <sup>8</sup> Soule (1853-1935)	Marilla A - ? - Wellman (18??-div.)	SA-82B
	1)1875 Emma Frances Newbert (1869-1916)	
SA-84 John Inis Clark <sup>7</sup> Sowle (1804-1849)	1831 Abigail (Meeker) Hines (1795-1885)	SA-3
31,917 John James <sup>7</sup> Sowle (1838-1921)	1858 Mary Ann MacLauren (1837-1909)	31,900
31,918 John Lutman <sup>10</sup> Soule (1869-p1960)	1910 Mary Adelaide (Yeates)(Darborough) Francis (18??-19??)	31,949
70,999 John Manson <sup>8</sup> Soule (1856-1936)	1879 Ida Waterman Bates (1859-1938)	61,700
SA-85 John Marvin <sup>7</sup> Sowles (1798-1863)	1)1820 Sophia Williams (1801-1843)	71,180
	2)1847 Melissa K - ? - Washburn (1829-p1882)	
31,919 John Morton <sup>8</sup> Soule & 31,920; 26,990 (1819-1898)	1842 Aroline Peabody Pratt (1820-1916)	31,890
SA-86 John Sanford <sup>7</sup> Soule (1817-1904)	1847 Maria Phoebe Kingsbury (1829-1910)	70,980
SA-87 John Wendall <sup>11</sup> Soules (1926-Live)	1946 Dorothy Aileen Pittman (1928-Live)	SA-97
31,921 John Wesley <sup>7</sup> Soule (1834-1914)	1858 Climena Luce Whitney (1834-1910)	32,059
71,000 Jonathan <sup>4</sup> Soule (1710-1779)	1736 Lydia Sisson (1714-1779)	32,056
31,922 Jonathan <sup>4</sup> Soule (1711-p1771)	1731 Elizabeth Gifford (1712-p1771)	31,993
31,924 Jonathan <sup>5</sup> Soule & 31,925 (1748-1832)	1776 Honour/Honor Southworth (1757-1852)	31,980
31,923 Jonathan <sup>5</sup> Soule (1756-1841)	1783 Mary Mitchell (17??-18??)	31,902
31,927 Joseph <sup>3</sup> Soule (1679-1763)	c1710/11 Mary Peterson (c1689-1781)	31,911
31,926 Joseph <sup>4</sup> Soule (1722-1800)	1742 Mercy Fullerton (1721-1808)	31,930
71,003 Joseph <sup>5</sup> Soule/Sowle (c1740-1822)	1763 Charity Tripp (1747-a1835)	<u>71,080</u>
NOTE: The parental number in the right hand column is here changed from 32,507 as shown in the Mayflower Index to 71,080. Through inadvertence the Society had approved descent from another contemporary William <sup>4</sup> Soule. Detailed justification for this revision appears in SOULE NEWSLETTER 3:117-122 (July 1969 issue).		
71,002 Joseph <sup>5</sup> Soule (1747-1820)	c1767 Eunice Hungerford (c1751-1839)	71,076
71,004 Joseph <sup>6</sup> Soule (1779-1863)	1809 Esther Whitney (1788-1870)	71,002



71,001 Joseph <sup>6</sup> Soule (1785-1862)	1804 Rachel Allen (1785-1851)	71,003
71,172 Joseph Andrew Jackson <sup>8</sup> Soule (1831-1907)	Sophia Holben 1858 (1838-1917)	70,961
71,005 Joseph Douglas <sup>7</sup> Soule (1817-1897)	c1845 Mary Elizabeth Barnes (1824-1886)	71,004
31,928 Joseph Thomas <sup>7</sup> Soule (1822-1900)	1853 Frances Fensley (1835-1909)	32,049
SA-88 Joseph Tripp <sup>7</sup> Soule (1795-1864)	c1819/20 Mary Brown (1797-1870)	SA-77B
31,930 Joshua <sup>3</sup> Soule (1681-1767)	1704/5 Joanna Studley (16??-a1767)	31,911
31,929 Joshua <sup>5</sup> Soule & 9,785; 9,786 (1742-1808)	1765 Mary Cushman (1744-1819)	31,926
71,006 Joshua <sup>6</sup> Soule (1781-1867)	1803 Sarah Allen	31,929 +9,785
31,931 Josiah <sup>3</sup> Soule (1679-1764)	1704 Lydia Delano (1680-1763)	31,911
31,932 Josiah <sup>5</sup> Soule (1743-1806)	1782 Alice Soule (1763-p1807)	31,980
71,007 Josiah Cushman <sup>7</sup> Soule (1794-1872)	1817 Sarah "Sally" J -?- Young (1799-1888)	31,807
31,933 Julia <sup>9</sup> Soule (1855-1923)	1874 John Albert Van Horn, Sr. (1852-1908)	31,809
SA-89 Julia Ernestine <sup>9</sup> Soule (1876-1960)	1906 Charles William Todd (1871-1953)	31,934
71,008 Julia K - ? - <sup>8</sup> Soule (1832-1907)	1848 Orlando Humason (1819-1875)	71,007
31,934 Julius Emery <sup>8</sup> Soule (1844-1960)	1867 Amelia Emma Lockner (1853-1914)	31,847
71,009 Justus <sup>8</sup> Soule (1807-1859)	1840 Mary Ann Harding (1821-1913)	32,044
31,935 Justus Freeland <sup>8</sup> Soule (1862-1939)	1888 Isabel Dora Simpson (1869-1938)	31,790
31,936 Kathleen Frostina <sup>8</sup> Soule (1861-p1909)	Unmarried	31,789
71,181 Kathryn May <sup>9</sup> Sowles (1904-p1956)	1938 John Podgwaite (1899-p1956)	71,177
31,937 Lafayette <sup>8</sup> Soule (1823-1905)	1852 Pamela Learned (1833-1912)	32,062
41,409 Lafayette/Fayette Hull <sup>8</sup> Soule (1850- ?? )	Mary Ann Barnes 1872 (1853-1912)	Note-19
31,938 Latten <sup>6</sup> Soule (1763-1828)	c1785 Lydia Leech (c1763/4-p1828)	31,986
71,010 Laura Ann <sup>7</sup> Soule (1816-19??)	1841 Paul Wing (1811-1907)	71,468
31,939 Laura Louisa <sup>8</sup> Soule (1869-	1896 Albert Stokes Apsey	31,942

SOULE KINDRED NEWSLETTER	Vol. V, No. 2	April 1971	Page 73
31,941 Lavina <sup>6</sup> Soule (1784-1805)	1903 Thomas Rogers		32,042
31,942 Lawrence Porter <sup>7</sup> Soule (1831-1942)	1857 Mercy Bassett Eldridge (1834-1921)		32,045
31,943 Leander <sup>7</sup> Soule (1831-1915)	1855 Caroline Lucinda Graham (1836-1897)		31,894
31,944 Leila L - ? - <sup>8</sup> Soule (1851-	18?? Henry J - ? - Welteroth		31,822
71,011 Leonice <sup>5</sup> Soule (1752-1783)	1771 Isaac Brewster (1727-1810)		70,904 +65,656
31,945 Lester <sup>5</sup> Soule (1843-1923)	1)1867 Cornelia Day (1851-1900)		31,981
	2)c1901 Fannie Motran DuBois (18??-1924)		
SA-90 Levi <sup>5</sup> Soule (1749-1780)	1776 Abigail Cole (1754-p1798)		31,991
SA-91 Levi <sup>6</sup> Soule (1779-1831)	1808 Abigail Cole (1784-1864)		SA-90
71,012 Levinah <sup>6</sup> Sowle (1766- ?? )	1784 William Phillips (1759-1830)		70,989
32,221 Lewis <sup>6</sup> Sowles (1774-1851)	1797 Mary Marvin (1779-1856)		32,061
31,946 Lewis <sup>7</sup> Soule	1)c1820 - ? -		
	2)1829 Mary (Phillips) Roberts (1796-1846)		31,777
71,013 Lewis James <sup>8</sup> Soule (1828-1889)	c1856 Elizabeth E - ? - Haggett (1835-1908)		31,810
SA-92 Lewis Porter <sup>8</sup> Soule (1855-1931)	1875 Delia Ann Soule (1859-1927)		Note-20
71,182 Lewis S - ? - <sup>7</sup> Sowles (1808-1882)	1)18?? Adelaide Mills ( ?? -1852)		
	2)185+ Harriet Mills (c1794-185+)		
	3)185+ Elvira Mills (1835-1890)		32,053
SA-93 Lewis Starrett <sup>7</sup> Soule (1813-1873)	1834 Eleanor Flanders (1812-1897)		SA-91
71,183 Lewis William <sup>7</sup> Sowles (1805-1864)	1830 Anna Reynolds (1808-1872)		71,180
31,947 Lillian <sup>9</sup> Sowles/Soule' (1856-p1930)	1880 Frank Chamberlain Duncan (1849-1904)		31,947
71,014 Lillian Gertrude <sup>9</sup> Soule (1873-p1931)	1904 Leon Clark Butterfield (1874-1931)		41,409
71,015 Lizzie Bowker <sup>9</sup> Soule (1854-1933)	1876 Albert Porter Whittier (1854-1916)		70,929
31,949 Lois <sup>5</sup> Soule & 31,948 (1742-1831)	1763 Jabez Vaughan, Jr. (1740-1817)		32,068 +12,115
also 74,511			

71,017	Lorraine Amelia Barnes <sup>8</sup>	Soule	Seneca Hyde	71,005
	(1846-1909)	1867	(1846-1901)	
71,016	Loretta Harrington <sup>9</sup>	Soule	Frank Stinson Carter	71,013
	(1874-p1959)	1905	(1872-1957)	
SA-94	Loretta May <sup>9</sup>	Soule	Clarence Michael Kimmel	SA-74
	(1898-Live)	1924	(1896-Live)	
71,019	Louisa <sup>7</sup>	Soule	John Burnham	31,783
	(1804-1855)	1823	(1797-1865)	
SA-95	Lucetta <sup>6</sup>	Soule	1)18?? - ? - Low	31,776
	(1798-1884)		(17??-a1827)	
			2)1827 Alexander J - ? - Parker	
			(1802-1850s)	
SA-96	Lucetta <sup>8</sup>	Soule	1839 Samuel Sidney Murray	SA-8
	(1820-1856)		(1814- ?? )	
71,018	Lucia Mary <sup>10</sup>	Soule	1930 Lowell Jenkins Chawner	31,767
	(1903- ?? )		(1896-19??)	
71,020	Lucinda <sup>7</sup>	Sowle	1840 Austin Ladd	71,175
	(1817- ?? )		(1812-1899)	
71,021	Lucy <sup>6</sup>	Soule	1800 Moses Bennett	31,859
	(1781-18??)		(1778-1861)	
31,950	Lucy Church <sup>9</sup>	Soule	1876 Jacob Loring Pratt	31,857
	(1852- ?? )		(18??- ?? )	
31,951	Lucy Nelson <sup>8</sup>	Soule	1873 Rufus Nelson Lucas	Note-21
	(1854-1941)		(1850-1895)	
31,952	Lura Lafayette <sup>9</sup>	Soule	Unmarried	31,937
	(1861-1934)			
71,022	Luther <sup>7</sup>	Soule	c1804 Sarah "Sally" Trumbull	31,886
	(1786-p1855)		(c1790-p1855)	
SA-97	Luther Hugh <sup>10</sup>	Soules	1914 Blanche Harper	SA-45
	(1892-1966)		(1893-1951)	
SA-98	Luther Hugh <sup>11</sup>	Soules	1937 Bessie Merle Myers	SA-97
	(1915-Live)		(1913-Live)	
SA-99	Luther Hugh <sup>12</sup>	Soules	1964 Marian St. Clair	SA-98
	(1938-Live)		(1942-Live)	
31,953	Luzetta Columbia <sup>8</sup>	Soule	1891 George Sampson Haskell	31,802
	(1865-		(1863-	
71,023	Lydia <sup>3</sup>	Soule	1704 William Brownell, Jr.	31,853
	(p1681-17??)		(1682-17??)	
31,955	Lydia <sup>4</sup>	Soule	1743 Ichabod Simmons	31,931
& 30,560/561	(1719-1779)		(1722-	
71,024	Lydia <sup>5</sup>	Soule	1763 Jedediah Dwelley	70,904
	(1740-1819)		(1737-1778)	
SA-100	Lydia <sup>5</sup>	Soule	1867 Charles Curtis	31,841
	(1745-1831)		(1744-1812)	
31,954	Lydia <sup>6</sup>	Soule	1786 Joseph Barstow	32,023
	(1766-1812)		(1725-1834)	
31,956	Mabel Jane <sup>8</sup>	Soule	1853 Joseph Smith Waream	31,775
	(1834- ?? )		(1832-1880)	
SA-101	Malcolm Scott <sup>11</sup>	Soule	1963 Jane Winston Pinkerton	SA-20
	(1933-Live)		(1932-Live)	
71,025	Margaret <sup>7</sup>	Soule	1803 Peleg S - ? - Richmond	31,820
	(1786-1839)		(1780-1862)	



SA-102 Marie Antoinette <sup>11</sup> Soule'	1915 Leland Harrison Walker	SA-53
(1895-	(1888-	
71,026 Marie Augusta Sherman <sup>8</sup> Soule	Unmarried	70,937
(1868-p1953)		
31,957 Marjorie <sup>9</sup> Soule	1933 William Beck Widnall	31,877
(1903-Live)	(1906-Live)	
31,958 Martha <sup>4</sup> Soule	1732 Thomas Thompson	31,913
& 31,959 <sup>6</sup> (1702-1772)	(1684-1781)	
43,444 Martha <sup>6</sup> Soule	1808 Peleg Bradford	Note-22
(1788-1856)	(1786-1864)	
71,027 Martha <sup>8</sup> Soule	1844 Linus Bliss	70,908
(1826-1903)	(1822-1872)	
31,960 Martha Anna <sup>9</sup> Soule	Unmarried	32,024
(1858-1935)		
71,028 Martha B - ? - <sup>7</sup> Soule	1783 Enos Howard	31,820
(1770-1859)	(1760-1844)	
71,029 Martha Barber <sup>8</sup> Soule	1870 Hamilton Smith Gilbert	70,972
(1834-1914)		
SA-103 Martha Maude <sup>9</sup> Soule	1889 Edmund Bennett Hunt	SA-58
(1866-1955)	(1864-1938)	
31,968 Mary <sup>2</sup> Soule	a1668 John Peterson	31,852
(c1636-c1720)		
31,966 Mary <sup>3</sup> Soule	c1699 Joseph Devol/Davol	31,853
(c1680-p1729)	-c1726)	
31,962 Mary <sup>4</sup> Soule	1722 Freedom Chamberlain	31,757
(c1701-	-p1772)	
31,970 Mary <sup>4</sup> Soule	1731 Obadiah Sampson	31,913
& 31,971 (1709-1794)	- 1766)	
31,964 Mary <sup>4</sup> Soule	1732/3 Joshua Cushman	31,927
(1711-1750)	(1707-1764)	
31,965 Mayflower Index entry has been deleted		
31,967 Mary <sup>5</sup> Soule	1741 Abraham Josselyn	31,884
(1725-176?)	(1717-1778)	
SA-104 Mary <sup>5</sup> Soule	1755 John Waite	32,057
(1731-p1778)	(1720-p1788)	
71,030 Mary <sup>7</sup> Soule	1817 Asa Pettis Emerson	71,048
(1800-1876)	(1796-1869)	
31,969 Mary <sup>8</sup> Soule	1833 Anthony Roseboom	31,799
(1813-1881)	(1805-1898)	
71,031 Mary <sup>7</sup> Soule/Sowle	1850 Thomas Sinclair	70,965
(1826-1914)	(1827-1904)	
31,961 Mary/May <sup>9</sup> Soule	Unmarried	32,025
(1876-19??)		
SA-105 Mary Adelaid "Addie" <sup>9</sup> Soule	Jacob Henry Glosson	70,929
(1850-1911)	1)1875 (1850- ?? )	
	2)1883 Jacob Shoop Gantz	
	(1850-1921)	
31,972 Mary Allerton <sup>9</sup> Soule	1886 William Twitch Preston	31,920
(1858-p1897)	(1859-p1897)	
31,973 Mary Amelia <sup>9</sup> Soule	1867 Edward Vincent	31,837
(1844-1929)	(18??-1907)	

71,033 Mary Amelia <sup>9</sup> Soule (1853-1927)	1)1870 Atwood Wise (1851-187?)	70,969
	2)1874 James A - ? - Richardson (1844-1919)	
71,032 Mary Ann <sup>8</sup> Soule (1815-1904)	1835 William Phelps (1806-1887/9)	31,878
31,974 Mary Bartlett <sup>9</sup> Soule (1854-19??)	1893 John Haynes Coogins (1847-1919)	32,024
31,975 Mary Caroline <sup>8</sup> Soule (1867-1927)	Unmarried	31,855
31,976 Mary Elizabeth <sup>8</sup> Sowle (1877-	1902 Vollie Howe Griffith (1877-	31,917
31,977 Mary Elvira <sup>8</sup> Soule (1850-p1900)	1872 Anthony Dennis Hall (1845-p1900)	32,052
32,222 Mary Emily <sup>8</sup> Sowles (1845-	1868 Newton Perkins	32,220
SA-106 Mary Emma <sup>?</sup> Soule (1859-1930)	1880 William George Moseley (1858- ?? )	SA-79B
SA-107 Mary Grace "Mamie" <sup>9</sup> Soule (1868-1944)	1892 Erastus James Brower (1860-1955)	71,062
71,034 Mary Turner <sup>8</sup> Soule (1854-1927)	1876 Edgar Reed also 47,511 (1852-1930)	70,975
71,184 May <sup>9</sup> Sowles (1866-p1950)	1887 Victor Emanuel Metzler (1857-a1951)	71,178
SA-108 Media Inis <sup>9</sup> Sowle (1860-1917)	1889 Hettie Brown (1868-1955)	SA-133
31,978 Mehitable <sup>6</sup> Soule (1764-1802)	1782 David Dennison, Jr. (1760-1843)	31,908
71,035 Melissa D - ? - <sup>8</sup> Soule (1848-1921)	1864 George A - ? - Dockum (1842-1900)	71,061
71,036 Melville Cox <sup>9</sup> Soule (1847-1912)	1869 Inez Bell Smith (1846-1941)	71,009
71,037 Melville Glenn <sup>10</sup> Soule (1874-	Etha E - ? - Williamson	71,036
71,038 Melvin Osborne <sup>8</sup> Soule (1874-1952)	1)1895 Minetta W - ? - Potter (1871-Div.)	71,061
	2)1915 Lettie May Jones (1876-1963)	
9,817 Mercy <sup>6</sup> Soule (1748-1788)	1769 Noah Cushman (1745-1818)	Note-23
31,979 Mercy <sup>5</sup> Soule (1749-1816)	c1769 Ozias Blanchard (1742-1826)	31,780
71,039 Meribah <sup>6</sup> Sowle (1784-1881)	1805 - ? - Pooler	70,984
SA-109 Merton Chadsey <sup>10</sup> Soule (1907-Live)	1933 Edith Louise Bryce (1910-Live)	SA-70
31,980 Micah <sup>4</sup> Soule (1711-1778)	1740 Mercy Southworth (17??-1797)	31,931
71,040 Mildred Bernice <sup>10</sup> Soule (1905-Live)	1928 Spencer Arthur Coplen (1904-Live)	70,947

31,981 Milo <sup>8</sup> Soule (1804-1891)	1830 Irene Blodgett (1807-1900)	31,882
31,982 Minnieola Albertina <sup>9</sup> Soule (1864-1936)	Unmarried	Note-24
31,984 Moses <sup>3</sup> Soule & 32,181 (c1669-1748)	1)1701 Mercy Southworth (c1670-c1728)	31,912
	2)1729/30 Sarah Chandler	
31,983 Moses <sup>5</sup> Soule (1738-p1790)	1760 Nancy Hughes / Hewes (c1736-1812)	31,780
31,985 Moses <sup>5</sup> Soule (1738-1796)	1761 Eleanor Williams	31,884
71,041 Moses <sup>6</sup> Soule (1796-1851)	1793 Martha Lane (1772-1837)	31,983
71,042 Myrta Belle <sup>10</sup> Soule (1883-19??)	1907 Leonard Joel Brown (1873-1949)	71,036
31,988 Nathan <sup>3</sup> Soule (c1675/80-1736)	1704 Mary (Mercy?) Gifford (early 1680s-1772)	31,853
31,991 Nathan <sup>4</sup> Soule (1725-1782)	1746 Sarah Southworth (1729-a1796)	31,930
31,986 Nathan <sup>5</sup> Soule (1738-1806)	1762 Sarah Birdsall (c1735-p1806)	31,856
31,989 Nathan <sup>6</sup> Soule (1763-1851)	1788 Mabel Hodges (1762-1856)	31,904
31,987 Nathan <sup>6</sup> Soule (1781-1872)	1804 Bethia Freeman (1773-1870)	32,042
31,990 Nathan <sup>6</sup> Soule (1784-1849)	1806 Nancy Howland (1788-1868)	31,929
SA-110 Nathan Augustus <sup>7</sup> Soule (1822-1887)	1846 Almira Timberlake (1823-1885)	31,990
31,992 Nathaniel Soule (c1637/8-a1699)	a1681 Rose - ? - (c1640-a1708)	31,852
NOTE: Although Ridlon's book, published in 1926 (p993), claims to identify the wife of Nathaniel <sup>2</sup> Soule as ROSAMOND THORN, it is interesting that no record known to us describes her other than "Rose" without a determinable surname. Also, the first 1932 edition of Mayflower Index lists her as - ? - , Rose. The 1960 edition has the "Thorn" added. The late Waldo Chamberlain Sprague, one-time Historian General of the Society, challenges Ridlon on this point in his article in THE AMERICAN GENEALOGIST 38:164-165 (July 1962) and therein concludes that Rose' surname is yet unknown. We agree!		
31,993 Nathaniel Soule & 31,994 (1681-1766)	1)1708 Meribah Gifford -a1732)	31,992
	2)1732/3 Hannah (Randall) Macomber	31,994
SA-111 Nathaniel <sup>5</sup> Sowle (1746/7-1805)	1770 Abigail Vose (1752-1828)	SA-68
71,043 Nathaniel <sup>5</sup> Soule (1767-1862)	1794 Lydia Freeman (1771-1827)	31,761
SA-112 Nealon <sup>7</sup> Soules (1804-1843)	1827 Rebecca (Jessup) Sherman (c1801-1878)	SA-144
SA-113 Nicholas Emery <sup>8</sup> Soule (1825-1919)	1886 Lucy Rhodes Weaver (1852-1922)	SA-60



SOULE KINDRED NEWSLETTER	Vol. V, No. 2	April 1971	Page 78
71,044 Oakes Sampson <sup>7</sup> Soule (1809-1890)	1)1833 Rachel Jones Snell (1807-1870)	70,905	
	2)1872 Hannah (Palmer) Kilburn (1820-1913)		
71,045 Octavia <sup>7</sup> Soule (1812-1898)	1835 Benjamin True (1808-1888)	70,927	
31,995 Olive <sup>5</sup> Soule & 38,831 <sup>7</sup> (1749-1833)	1768 Nathaniel Winsor (1747-1840)	31,926	
71,046 Olive <sup>7</sup> Soule (1807-1878)	1829 David Burbank (18??-1855)	70,924	
SA-114 Opal Dale <sup>10</sup> Soule (1902-	1926 Louis Joseph L - ? - Manley (1900-1959)	SA-46	
SA-115 Orpha Leone <sup>11</sup> Soules (1914-Live)	1)1932 Hewell Carroll Taylor (1910-	SA-27	
	2)1962 Fred N - ? - Thompson (1904-		
SA-116 Origen Brigham <sup>8</sup> Soules (1826-1908)	1)1851 Ann Hussey (1828-1853)	SA-18	
	2)1854 Frances Ann (Watkins) Draper (1826-1912)		
SA-117 Oscar Albertus <sup>9</sup> Soule (1871-1956)	1897 Elizabeth Allen Shaw (1874-1968)	SA-12	
31,996 Oscar Frank <sup>8</sup> Soule (1834-1902)	1)1857 Mary Agnes Lawrence (1833-1867)	31,836	
	2)1868 Sarah Bradley (1841-1906)		
31,998 Oscar Frank <sup>10</sup> Soule (1890-Live)	1912 Dorothy Bigelow Smith (1890-Live)	31,850	
32,000 Otis <sup>7</sup> Soule & 31,199 <sup>7</sup> (1800-1844)	1825 Sarah Denning (p1800-18??)	31,898 +18,275	
71,047 Pamela <sup>7</sup> Soule (1830-1920)	1850 Albion King Parris Grover (1824-1897)	71,081	
SA-118 Parke Wilford <sup>10</sup> Soule (1907-Live)	1935 Genevieve Chapman (1908-Live)	SA-71A	
SA-119 Parker Fernando <sup>8</sup> Soule (1861-1950)	1)1886 Luceba Dorr Kingsley (1859-1897)	31,942	
	2)1904 Julia Anna Whitten (1881- ?? )		
32,001 Patience <sup>2</sup> Soule (c1630-1705/6)	1666 John Haskell, Sr. (c1639/40-1706)	31,852	
SA-120 Patrick Michael <sup>11</sup> Sowle (1937-Live)	Unmarried	71,163	
32,002 Paul Henchman <sup>8</sup> Soule (1875-p1913)	1903 Byrde Lydia Hesler (1874-	31,871	
SA-121 Pauline Miriam <sup>9</sup> Soule (1903-	1931 Charles MacKinnon (1899-1957)	SA-65	
SA-122 Peleg <sup>6</sup> Sowle (1773-p1840)	c1788/9 Betsey Jane Warren (1773-p1840)	71,003	
71,048 Peletiah <sup>6</sup> Soule (1779-1849)	1)c1799 Sarah Wood (c1780-1824)	31,924	
	2)1826 Sarah Cromett (1804-1879)		

SOULE KINDRED NEWSLETTER	Vol. V, No. 2	April 1971	Page 79
71,049 Peter Jacob <sup>8</sup> Soule (1831-1904)	1861 Eliza Ann Cheney (1846-1925)	31,883	
71,088 Peter Thomas <sup>8</sup> Soules (1825-1887)	1849 Phoebe Millard Moore (1829-1911)	71,091	
35,131 Phebe <sup>6</sup> Soule (c1779-1823)	1801 Isaac Thompson (1774-1858)	Note-25	
32,004 Philander <sup>6</sup> Soule (1785-1857)	1812 Hadassah Wheeler (1790-1857)	31,776	
32,003 Philander <sup>7</sup> Soule (1811-1894)	1)1842 Abigail Morris Burnham (1818-1853)	32,070	
	2)1854 Lydia Parsons Burnham (1811-1898)		
32,005 Priscilla <sup>5</sup> Soule (1745-1837)	1765 James Churchill (1746-1803)	31,786	
SA-123 Priscilla Bradford <sup>9</sup> Soule (1897-Live)	1924 Kenneth McCabe (1898-Live)	SA-119	
71,050 Polly Elliot <sup>7</sup> Soule (1801-18??)	1824 Legrand Olmstead (1797-1858)	71,077	
32,006 Rachel <sup>3</sup> Soule (c1662-1727)	1688 John Cobb, Jr. (1662-1727)	31,912	
32,007 Rachel <sup>4</sup> Soule (1708-1797)	1728 David Magoon / Magoun (1703-1787)	31,757	
71,051 Rachel Almatia <sup>9</sup> Soule (1875-	1899 Charles Thomas Johnson (1866-1943)	70,934	
32,009 Rebecca <sup>3</sup> Soule (c1656/7-1732)	1688 Edmund Weston (1660-1727)	31,912	
22,119 Rebecca <sup>6</sup> Soule (1766-1848)	1792 Simon Loring (1762-1842)	Note-26	
32,008 Rebecca <sup>7</sup> Soule (1786-1866)	1813 Nehemiah Burbank (1777-1814)	31,807	
SA-124 Rebecca Whitmarsh <sup>7</sup> Soule (1802-1842)	1820 Daniel Churchill, Jr. (1800-18??)	SA-157	
32,010 Reliance <sup>5</sup> Soule (1745-	1761 Stephen Davis	31,907	
32,011a Richard <sup>6</sup> Soule (1786-1866)	1)1810 Prudence Loring (1789-1823)	31,895	
32,011 do	2)1824 Lucy Loring (1790-1858)		
32,012 Richard <sup>7</sup> Soule (1812-1877)	1840 Harriet Winsor (1816-1905)	32,011a	
SA-125 Richard Claude <sup>11</sup> Soule (1926-	1948 Constance Marie Vrazel (1928-	SA-19	
71,173 Robert <sup>6</sup> Sowle (1767-1848)	1)1793 Meribah Durfee (1768-1817)	71,003	
	2)c1819/20 Betsey - ? - (c1782-1835)		
	3)p1835 Cynthia Capron		
71,089 Robert Harvey <sup>10</sup> Soules (1906-		71,090	
71,090 Robert Telfer <sup>9</sup> Soules (1855-1909)	1881 Mary Louise Rose (1860-1928)	71,088	

71,174 Rosa Arilla Dean <sup>9</sup> Soule (1867-1938)	1892 William Lezotte (1854- ?? )	71,176
32,013 Rowland <sup>5</sup> Soule (1733-p1791)	1)1761 Mary Irish (c1733/4-a1766) 2)1766 - ? - (17??-a1791)	31,854
32,014 Rowland <sup>?</sup> Soule (1784-1859)	c1805 Cynthia Phelps (17??-1826)	??
NOTE: The accepted lineage places Rowland Soule (1784-1859) as the son of Rowland Soule (32,013 above) & Mary Irish. It is now obvious, from the dates involved, that this is now an untenable conclusion. Your compilers are of the considered opinion that the relationship is grandfather and grandson rather than father and son. Unfortunately, the identity of the intervening 6th generation family has not been established. Consequently, this situation must be clarified before any further lineages based on descent from Rowland & Cynthia (Phelps) Soule can be accepted.		
71,053 Rufus <sup>6</sup> Soule (1777-1840)	1803 Jane Penn Hurtt (c1790-1855)	31,859
32,015 Rufus <sup>6</sup> Soule (1785-1867)	1)1805 Susan Mitchell (1785-1853) 2)1854 Philomena Talbot (1819-1858) 3)1858 Hannah B - ? - Small	31,908
71,052 Rufus <sup>7</sup> Soule (1812-1850)	1829 Eunice Hill (1810-1885)	70,928
71,054 Rufus A - ? - <sup>7</sup> Soule (1806-1875)	1)1830 Jane Whitney (1808-1845) 2)c1846/7 Lucy Cousens (1809-1869)	31,783
32,016 Rufus Albertson <sup>8</sup> Soule (1839-1913)	1860 Susan Carver Nesmith (1839-1921)	32,052
32,017 Rufus Albertson <sup>9</sup> Soule (1877-1913)	1904 Florence M - ? - Renne (18??-1941)	32,016
71,056 Ruth Fulton <sup>10</sup> Soule (1895-)	1914 Elmer Michael Runice (1885-1937)	71,179
71,055 Ruth Henrietta <sup>9</sup> Soule (1899-Live)	1929 Albert Henry Daggett	70,977
14,295 Sally Soule	See Sarah Lucinda <sup>7</sup> Soule - 14,295	
32,019 Sally Soule	See Sarah <sup>7</sup> Soule - 32,030	
71,057 Salmon <sup>6</sup> Soule (1771-1858)	179? Sarah Bradley (1779-1846)	71,002
71,058 Salvina <sup>6</sup> Soule (1764-1838)	1785 Timothy Wood (1758-1834)	31,782
32,023 Samuel <sup>5</sup> Soule (1734-1768)	1756 Mehitable White (c1734-1822)	31,909
32,020 Samuel <sup>6</sup> Soule & 32,021 (1769-1816)	1794 Joanna Farnham (1768-1848)	31,915
71,059 Samuel <sup>6</sup> Soule (1775-1833)	1802 Lydia Bradford (1778-1834)	31,782



32,022 Samuel <sup>6</sup> Soule (1786-1863)	1)1807 Ruth Partridge (1788-1811)	
	2)1814 Hannah Partridge (1792-1838)	31,932
10,796 Samuel <sup>6</sup> Soule (1791-1880)	1)1812 Louise Sarah Griffin (c1794-1813)	
	2)1814 Sophronia Dennison (1796-1860)	Note-27
	3)1862 Deborah Dennison (c1790-1878)	
SA-126 Samuel <sup>7</sup> Sowle (1795-1859)	c1825 Lydia Russell (c1800-1872)	SA-122
71,060 Samuel <sup>7</sup> Soule (1797-1882)	c1823 Susan Brookings (1799-1880)	32,020
71,061 Samuel Holbrook <sup>7</sup> Soule (1822-1797)	1846 Azelia Dennison (1828-1898)	10,796
32,024 Samuel Holmes <sup>8</sup> Soule (1821-1864)	1838 Thirza Maria Reed (1828-1884)	31,808
71,062 Samuel Page <sup>8</sup> Soule (1825-1901)	1849 Mary Miranda Adams (1834-1904)	71,068
32,025 Samuel Philander <sup>8</sup> Soule (1843-1915)	1874 Dorcas Maria Mansfield (1846-1913)	32,003
SA-127 Sanford Perkins <sup>8</sup> Soule (1857-1934)	1879 Frances Ellen Chadsey (1861-1918)	SA-56
32,037 Sarah <sup>3</sup> Soule (c1660/1-169?)	c1680 Adam Wright (c1645-1724)	31,912
71,063 Sarah <sup>4</sup> Soule (1703-a1748)	1723 Samuel Howland (1703/4-17??)	32,056
71,064 Sarah <sup>4</sup> Soule (1703-1743)	1728 Jonathan Snow (c1703-1783)	31,913 +35,017
SA-128 Sarah <sup>4</sup> Sowle (c1716-a1747)	1741 Remembrance Davis	71,071
32,034 Sarah <sup>5</sup> Soule & 32,033; 35,028(1727-1807)	1746 Nathan Tinkham (1724-1807)	32,068 +12,115
32,026 Sarah <sup>4</sup> Soule (1728-	1747 Aaron Bisbee (1724-	31,930
32,032 Sarah <sup>5</sup> Soule (173?-1772)	1760 Peleg Tallman (1736-1785)	31,922
32,029 Sarah <sup>5</sup> Soule (1744-1830)	1765 Benjamin Prior, Jr. (1740-1821)	31,926
32,028 Sarah <sup>5</sup> Soule (1744-	1767 Samuel Nichols	31,818
32,031 Sarah <sup>6</sup> Soule (1755-1839)	1777 Thomas Sturtevant (1750-1836)	32,066
32,035 Sarah <sup>5</sup> Soule (1763-1847)	178? John Trowbridge (1762-1828)	31,991
32,030 Sarah <sup>7</sup> Soule (1788-p1850)	1717 Dependence Sturtevant (1785-1865)	31,888
32,027 Sarah <sup>8</sup> Soule (1826-1915)	1853 Nathan Dudley (1823-1920)	32,000
71,065 Sarah Ann <sup>8</sup> Soule (1823-1853)	1843 Charles Dillingham Litchfield (18??-1909)	70,931

SA-129 Sarah Clementine <sup>8</sup> Soule (1835-1920)	1852 William Henry Castner (1829-1915)	SA-93
32,038 Sarah Croswell <sup>8</sup> Soule (1818-	1830 Thomas Hunter	32,067
32,039 Sarah Follansbee <sup>8</sup> Soule (1863-	1890 John G - ? - McMillan	32,067
SA-130 Sarah Hudson <sup>6</sup> Soule (1768-1877)	1)1794 James Churchill (1771-1803)	SA-29
	2)1816 Jephtha Delano (1758-1843)	
14,295 Sarah Lucinda <sup>7</sup> Soule (1801-1889)	18?? Ezra Fuller (1789-1864)	SA-11
SA-131 Sarah Margaret <sup>8</sup> Soule (1838-1895)	1866 Harrison Monroe Strickler (1843-1928)	SA-78
SA-132 Seymore / Seymour <sup>9</sup> Soule (1862-1897)	188? Mattie Mosier (1868- ?? )	SA-63
SA-133 Sheridan Hazzard <sup>8</sup> Sowle (1836-1915)	1859 Sarah Jane Davis (1840-1936)	SA-84
32,040 Sheridan William <sup>8</sup> Soule (1865-	1893 Agnes Hilton (Young) Durbin	32,063
71,066 Sidney Church <sup>8</sup> Soule (1873-1943)	1901 Mercy Alden Parker (c1878-1959)	70,944
32,041 Sidney Howard <sup>8</sup> Soule (1849-1914)	1)1874 Mary Alice Yale (1850-1884)	31,766
	2)1894 Helen Julia Sheldon	
SA-134 Silas <sup>6</sup> Sowles (1769-1854)	c1798 Phebe Watson (1775-1852)	70,984
32,042 Simeon <sup>5</sup> Soule (1751-1831)	1)1776 Jane Weston (c1758-1800)	31,991
	2)1803 Asenath Brewster (1778-1865)	
71,068 Solomon <sup>7</sup> Soule (1800-1796)	1)1825 Keziah Page (1800-1821)	71,083
	2)c1830/1 Lydia Besse (1808-1886)	
71,067 Solomon <sup>8</sup> Soule (1823-1884)	1845 Lucinda Alger (c1831-1909)	70,906
SA-135 Sophia Sampson <sup>7</sup> Soule (1804-1886)	1824 Samuel Wood (1801-1860)	70,905
32,043 Sophronia <sup>7</sup> Soule (1816-1858)	184? Benjamin Davis (1814-1872)	10,796
71,069 Stanley Sherman <sup>8</sup> Soule (1870-p1953)	Unmarried	70,937
32,044 Stephen <sup>7</sup> Soule (1788-1866)	1800 Dorcas Morey (1779-1849)	31,820
32,045 Stephen <sup>6</sup> Soule (1792-1868)	1816 Lydia Pierce (1799-1877)	32,060 +29,426
SA-136 Stephen Hogeboom <sup>9</sup> Soule (1836-1917)	1858 Lucinda Maria Boyes	SA-30

SOULE KINDRED NEWSLETTER	Vol. V, No. 2	April 1971	Page 83
71,070 Susan Augusta <sup>7</sup> Soule (1825-1924)	1847 Walter Scott Bartlett (1818-1877)	71,448	
32,047 Susan Richmond <sup>9</sup> Soule & 32,046 <sup>2</sup> (1846-p1900)	1867 William Martin Perkins (1841-1900)	31,920 +29,990	
32,048 Susanna <sup>2</sup> Soule (1642- ?? )	a1660 Francis West (c1640-1696?)	31,852	
71,071 Sylvanus <sup>3</sup> Soule (c1684-p1754)	c1705/10 Sarah Slade (16??-p1729)	31,992	
SA-137 Sylvanus <sup>6</sup> Soule (1770-1839)	1794 Phebe Mitchell (1774-1840)	66,527	
71,072 Sylvia <sup>6</sup> Soule (1759-1827)	1770 Joshua Peterson (1751-1835)	32,023	
71,073 Thankful <sup>5</sup> Soule (1718/9-	1739/40 John Bennett -1769)	32,057	
71,074	Number not used in Mayflower Index		
SA-138 Theodore Arthur <sup>10</sup> Soules (1903-Live)	1938 Roxie Ann Hoskinson (1908-Live)	SA-75B	
32,050 Thomas <sup>6</sup> Soule (1783-1819)	1805 Lois Howard (1779-1842)	31,803	
32,049 Thomas <sup>6</sup> Soule (1787-1824)	1)1815 Bethia Dunham 2)1821 Sarah Currier Follansbee	31,781	
71,091 Thomas <sup>7</sup> Soules (1792-	c1812 Elizabeth (Wilder) Cook (1790-1860)	71,086	
32,051 Thomas Clement <sup>8</sup> Soule (1874-p1911)	1911 Nora Brown (1883-p1911)	31,928	
SA-139 Thomas H - ? - <sup>6</sup> Soule (1774-1849)	1)1805 Lydia Tinkham (c1783-1821) 2)1823 Betsey Soule (1784-1842)	SA-77A	
32,052 Thomas Howard <sup>7</sup> Soule (1810-1900)	1833 Margaret Albertson Dunham (1810-1879)	32,050	
71,075 Thomas Jefferson <sup>7</sup> Soule (1806-1878)	1832 Mary Ann "Maryanna" Gilbert (1809-1879)	71,048	
71,076 Timothy <sup>4</sup> Soule (1714-1770)	1736 Elizabeth Allen (1710-	31,988	
32,053 Timothy <sup>6</sup> Sowles (1762-1834)	c1786 Bridget Sewall (c1768-1825)	32,061	
71,077 Timothy <sup>6</sup> Soule (1768-1860)	c1790 Betsey Elliott (c1771-1843)	71,002	
SA-140 Venetia Hortense <sup>8</sup> Soule (1864-1951)	1887 Greenleaf Bailey Taylor (1864-1935)	SA-86	
71,078 Vicenta Fensley <sup>9</sup> Soule (1917/8-	1941 Charles Alvin Sparling (1918-	32,051	
SA-141 Vina Dell <sup>10</sup> Soule (1878-1947)	1896 Benjamin Franklin Merchant (1877-1951)	SA-4	
32,054 Virgil Marcellus <sup>8</sup> Soule (1832-1913)	1855 Catherine Denneen (1834-1899)	31,946	

32,055 Wesson <sup>4</sup> Soule (1735-1825)	1)1753 Ruhama Hicks (c1736-1771) 2)1772 Sarah Wilber / Wilbore / Wilbour -Div.) 3)1803 Philena Manchester	31,994
71,079 Wesson <sup>6</sup> Soule & 71,175 (1791-1888)	c1813/4 Elizabeth "Betsey" Curtis (1796-1866)	31,899
SA-142 Wilbur Erwin <sup>8</sup> Soule (1866-1909)	1894 Harriet Rachel Norton (1866-1951)	SA-110
32,056 William <sup>3</sup> Soule (c1670-1723)	c1690/1 Hannah (prob. <u>not</u> Brewster) (16??-a1734)	31,853
32,057 William <sup>4</sup> Soule (1692-1734)	1717/8 Rachel Allen (1692-p1734)	32,056
71,080 William <sup>4</sup> Soule (c1710-1778)	1)1733 Jemima Baker 2)c1736/9 Keziah Gifford	71,071
32,061 William <sup>5</sup> Sowles & 32,223 (1738-1811)	c1760 Anna Sewall (1739-1825)	31,841 +10,504
SA-143 William <sup>5</sup> Soule (1739-1777)	1760 Sarah Briggs (c1741-1820)	70,986
32,060 William <sup>5</sup> Soule (1759-182?)	1784 Priscilla Sampson (1762-1843)	31,926
SA-144 William / Bildad <sup>6</sup> Soules (1766-1820)	p1790 Jemima Butler (1773-1832)	31,985
71,083 William <sup>6</sup> Soule (1769-a1850)	1791 Rachel [Pool ?] Dillingham (c1768-p1850)	31,859
32,059 William <sup>6</sup> Soule & 32,058 (1774-1841)	1)179? "widow" Thompson (17??-1826) 2)1832 Clarissa Goodwin (1783-1858)	31,929 + 9,785
71,081 William <sup>6</sup> Soule (1785-1844)	1815 Elizabeth Mitchell (c1797-1850)	70,987
32,062 William <sup>7</sup> Sowles (1788-1871)	1812 Lurancy Smith (1793-18	32,053
32,073 William <sup>?</sup> Soule & 71,082 (1789-1852)	c1810 Deborah Ann (Paddock) Elwell ?? (c1789-1867)	
NOTE: The accepted lineage places William Soule (1789-1852) as the son of Rowland Soule (32,013 supra) & Mary Irish. It is now obvious, from the dates involved, that this is now an untenable conclusion. Your compilers are of the considered opinion that the relationship is grandfather and grandson rather than father and son. Unfortunately, the identity of the intervening 6th generation family has not been established. Consequently, this situation must be clarified before any further lineages based on descent from William & Deborah Ann (Paddock) (Elwell) Soule can be accepted.		
SA-145 William <sup>7</sup> Soule (c1802-1864)	c1820 Rebecca Hardy (c1805-p1850)	32,059



SOULE KINDRED NEWSLETTER	Vol. V, No. 2	April 1971	Page 85
SA-146 William <sup>8</sup> Soules (1823/4-1910)	1)1847 Almira Spooner (1826-1864) 2)1865 Jael Seager		71,091
SA-147 William Curtis <sup>10</sup> Sowle (1898-Live)	1923 Kathryn Aileen Steller (1900-Live)		SA-149
SA-148 William Dallas <sup>12</sup> Soules (1946-Live)	Unmarried		SA-151
SA-149 William Davis <sup>9</sup> Sowle (1862-1954)	1890 Josephine Eva Bohl (1864-1918)		SA-133
SA-150 William Emery <sup>9</sup> Soule (1890-1970)	1)1917 Anne Losina Wood (1895-19 2) Margaret B - ? - (Van Horsen) -p1971) McCarey		SA-113
SA-151 William Frederick "Fred" <sup>11</sup> Soules (1918-Live)	1941 Sibyl Louise Skinner (1923-Live)		SA-97
SA-152 William Freeman <sup>9</sup> Sowle/Soule (1887-1953)	Florence M - ? - Reed / Reid 1910 (1888-1965)		70,977
71,084 William Gilbert <sup>8</sup> Soule (1835-1925)	1866 Fannie E - ? - Davis (1845-1916)		71,075
36,175 William Gore <sup>8</sup> Soule (1866-1938)	1899 Margaret Snow Wallace (1870-19 )		Note-28
SA-153 William H - ? - <sup>8</sup> Soule (1822-1906)	1849 Almeda E - ? - Lamb (1831-1886)		71,022
SA-154 William Henson <sup>11</sup> Sowle (1945-Live)	1965 Arlene Bjorsen (1946-Live)		71,163
71,176 William Henry <sup>8</sup> Sowle (1837-1878)	c1865 Ellen Austin / Justin? (c1834-1909)		71,165
32,063 William King <sup>7</sup> Soule (1820-1869)	1850 Frances Adeline Patten (1830- ?? )		32,004
SA-155 William Lloyd Garrison <sup>8</sup> Soule (1833-1931)	Mary Benson 1)1863 (1843-a1883) 2)1883 Ellen Wagner		SA-9
SA-156 William Milburn <sup>9</sup> Soules (1857-1944)	1881 Bertha Fraza (1861-1939)		SA-116
71,185 William Timothy <sup>8</sup> Sowles	1)1840 Mary Fulton (c1819-1850) 2)1851 Hannah Howe Learned (c1826-1896)		32,062
32,064 Winthrop Porter <sup>8</sup> Soule (1859-1914)	Unmarried		31,942
32,068 Zachariah <sup>4</sup> Soule & 32,069 (1694-1751)	1720 Mary Eaton (c1700-1773)		31,785 +32,656
32,066 Zachariah <sup>5</sup> Soule & 32,065 (1722-1760)	c1750 Sarah Bryant (1731-1805)		32,068 +12,115
SA-157 Zachariah <sup>6</sup> Soule (1763-1804)	1792 Nancy Dunham (1758-1867)		31,835
32,067 Zachariah <sup>7</sup> Soule (1780-1836)	1807 Abigail Croswell (c1789-1871)		31,888

32,070 Zebedee <sup>6</sup> Soule (1781-1865)	1)c1805 Lavina Mathews 2)1820 Priscilla Crapo -1864)	32,070
32,071 Zeruah / Zeruiah / Zerviah <sup>7</sup> Soule (1807-1899)	Unmarried	31,987
SA-158 Zerviah <sup>6</sup> Soule (1779-	1798 John Miller (1772-	31,792

This "numbers game"! Here are more details on INDEX NUMBERS - those numbers on the left hand column above and on the thirty-one (31) preceding pages. On page 54 we warned of some lack of numerical sequence in these numbers. Our listing within identical given names is by year of birth whereas the INDEX arranges alphabetically by surnames of spouses. This is the major cause of "shuffled" numbers. The following additional information also may be found helpful.

- (1) Unfortunately, Ridlon rarely used any spelling variant. With few exceptions he has named and spelled almost everyone as SOULE. Again, with few exceptions, applicants for membership in the Society subsequent to 1926 invariably cited Ridlon as the authority for their lineages. Hence, the name came out SOULE on far too many lineage papers on file. As the Mayflower Index has used the lineage spelling, some individuals are indexed under two spellings. We have consolidated all of these duplications and cite both index numbers. Also, we have tried to give the spelling normally used by the individual concerned during his lifetime. Where an individual made a change, either gradually or abruptly - and many did, we have given appropriate recognition by showing the variations in the foregoing. The following numbers were indexed as SOULE and can be followed approximately in numerical sequence:

31,757 thru 32,071 and 70,904 thru 71,084

- (2) Only a relatively few names were originally listed in the Index under variants. As these individuals are found in five separate series of numbers, they are widely distributed throughout our list. The following table has been prepared to facilitate any desired cross reference:

<u>SOULES</u>	<u>SOWLE</u>	<u>SOWLES</u>	<u>See Page</u>
	71,160		56
32,072 - 71,085	71,161		58
	71,162, 3 & 4		59
- 71,086 & 7			60
	71,165 & 6	- 71,177	61
	71,167		64
		- 71,178 & 9	65
	71,168 & 9		66
	71,170 & 1	32,220 -	67
		- 71,180	70
	71,172	- 71,181	72
		32,221 - 71,182 & 3	73
		32,222 - 71,184	76
- 71,088, 9 & 90	71,173		79
	71,174		80
- 71,091			83
32,073 -	71,175	32,223 -	84

SOULESSOWLESOWLESSee Page

-

71,176

- 71,185

85

- (3) Finally, our list of "Soule Lineages" also incorporates with identification to the extent practicable of Soule spouses appearing in non-Soule lineages. The numerical sequence of these names in the Index was dictated by the alphabetical arrangement of the names of the non-Soule spouses. The following "finder's chart" will enable the user to locate these individuals from Index numbers.

MAYFLOWER INDEX NumbersOriginal VolumeSee Page

1,678	I	64
9,785 & 9,786	I	72
9,817	I	76
10,276	I	60
10,796	I	81
13,551	I	62
13,947	I	64
14,295	I	80 & 82
14,795	I	64
20,295	I	63
21,768	I	55
23,703	I	55
26,434 (see 31,927)	I	55
26,438	I	55
27,877	I	69
30,560 & 30,561	II	74
32,178 & 32,179 (see 31,980)	II	76
32,181	II	77
35,028	II	81
35,108	II	60
36,175 35,131	II	79-85
38,831	II	78
41,409	III	73
43,444	III	75
47,511	III	67
61,507	III	64
61,700	III	59
65,374	III	68
66,527	III	60
71,448	III	59
71,468	III	65
74,584	III	64

PERTINENT NOTES (See right-hand "parental number" column)

- Note-1: Abby Parson Soule's connection to the family has not been established. However, the approved lineage is thru husband Ezekiel W. Mitchell who is in the 10th Generation from John Howland of the Mayflower. Her husband was born at Freeport, ME 2 Dec 1817, she was born in Maine on 14 Feb 1834 and died at Freeport 10 Dec 1877. They were married at Freeport on 1 Jan 1856. Hopefully with this background Don Maguire or one of our other Maine family experts will come up with her identity in due course!
- Note-2: Abigail is the daughter of Benjamin & Hannah (Whitman) Soule (Index Nos. 31,786 & 31,787 on page 57). However, the approved lineage is thru husband Luke Perkins.

- Note-3: This Abigail is daughter of Samuel & Mehitable (White) Soule but the accepted lineage is thru husband Reuben Peterson.
- Note-4: Annie Grey<sup>7</sup> Soule is the daughter of Freeman<sup>6</sup> & Nancy (Freeman) Soule (Index No. 13,13,947 on page 64). However, the approved lineage is thru her mother, Nancy Freeman.
- Note-5: Approved lineage is thru Abby J. Bradford. However, Bennett Soule is the son of Isaac & Abigail (Potter) Soule. No lineage thru this line has, as yet, been approved.
- Note-6: Approved lineage is thru Mercy Sprague, daughter of Seth & Deborah (Sampson) Sprague. However, Charles Soule is the son of Ezekiel & Clynthia (Wadsworth) Soule.
- Note-7: Approved lineage is thru Annie E - ? - Manson, daughter of John & Abigail T - ? - (Ford) Manson. Charles Williams Soule is the son of Josiah & Sophronia (Jenkins) Soule.
- Note-8: Approved lineage is thru John Tompkins, son of Micah (Michael?) & Sarah (Dring) Tompkins. Comfort Seabury Soule is the daughter of Abner & Dorcas (Seabury) Soule.
- Note-9: Originally approved lineage was thru Abiel Prince, daughter of Sylvanus & Elizabeth (Johnson) Prince. Cornelius Soule was the son of Barnabas & Jane (Bradbury) Soule through whom a direct line has subsequently been approved by the Society.
- Note-10: Approved lineage is thru Virginia Hope (Davis) Soule, daughter of Joseph & Mehitable (Reed) Davis. Daniel B - ? - Soule was the son of Daniel & Harriet (Whitney) Soule. No lineage thru that family has as yet been approved.
- Note-11: Initially approved lineage was thru Charles Orville Foster son of George P - ? - & Sarah J - ? - (Palmer) Foster. However, Ella Irene Sophia Sowles is the daughter of Horace William & Abigail Paddock (Dodge) Sowles - a subsequently approved line.
- Note-12: Approved lineage is thru Howland Keen, son of Daniel & Lucy (Freeman) Keen. Fanny Soule was the daughter of Asa & Ruth Howland (Stetson) Soule - a separately approved line.
- Note-13: Initially approved lineage was thru Abbie Parker (Vincent) Sowle, daughter of Ambrose & Susan (Parker) Vincent. However, Frederick Augustus Sowle is the son of Henry & Esther ( - ? - ) Lawrence Sowle - a subsequently approved line.
- Note-14: Approved lineage is thru Nancy Freeman, daughter of Bradford & Waity (Winsor) Freeman. Although no lineage has been accepted thru Freeman Soule, he is the son of Nathaniel & Lydia (Freeman) Soule - Index No. 71,043 listed on page 77.
- Note-15: Approved lineage is thru Ruth Sprague, daughter of Seth & Deborah (Sampson) Sprague. However, George Soule is the son of Ezekiel & Clynthia (Wadsworth) Soule - a subsequently approved lineage (see page 63).
- Note-16: Approved lineage is thru his mother Ella Etta Bacon, the daughter of Henry D - ? - & Julia A - ? - B - ? - (Page) Bacon and the wife of Professor Frank Soule - Index No. 31,849 listed on page 64.
- Note-17: Approved lineage is thru Charles Arthur Pembroke, son of David & Mary (Reynolds) Pembroke. Hortense Josephine Soule was the daughter of Lewis & Mary Angeline (Stuck) Soule.



- Note-18: Approved lineage is thru Mercy Bayley Harrub. SOULE KINDRED's abstract of Massachusetts Vital Records indicates that Mercy B. Soule, wife of James H., died at Dorchester 12 May 1862 ae 30-1-22; born at Scituate, daughter of Isaac M. & Mercy B. Harrub; also that they were married at Scituate 1 May 1854. Neither the approved lineage paper nor the family records on file give any further clues or information as to the birth and death data on this "lost Soule" except that the lineage paper accepted by the Society does give his birthplace as South Paris, ME. Incidentally, dates and places on the lineage paper are not wholly in agreement with MassVRs - a common but distressing fault!
- Note-19: Approved lineage is thru Mary Ann Barnes, daughter of Merritt & Mary Ann (Paige) Barnes. Identification of Mary Ann Barnes' spouse called Lafayette Hull Soule presented a frustrating problem until we were able to identify him from the name found in several Vermont records - Fayette Hull Soule, son of Harmon & Mary Ann (Beardsley, his 3rd wife. See Index No. 70,972 on page 66.
- Note-20: Approved lineage is thru wife Delia Ann Soule per SA-28 on page 61. Although husband Lewis Porter Soule has two lines in his own right to George Soule of the Mayflower, neither line has as yet presented to or considered by the Society. His parents were Daniel Griffin Soule and 2nd wife Mahala Porter Soule!
- Note-21: Approved lineage is thru wife's mother - Abigail Jane Bradford. See Note-5 on page 88.
- Note-22: Approved lineage is thru husband's mother - Hopestill Delano, wife of Peleg Bradford, Sr.; wife's thru John & Patience (Wormall).
- Note-23: Approved lineage is thru husband's father - William Cushman. However, wife Mercy Soule is the daughter of Jabez & Abigail (Bennett) Soule - see Index No. 31,877 on page 69.
- Note-24: Approved lineage is thru member's mother - Virginia Hope Davis, daughter of Joseph & Mehitable L. (Reed) Davis. See Note-10 on page 88 concerning Soule connection.
- Note-25: Approved lineage is thru husband, the son of Isaac & Huldah (Sturtevant) Thompson. However, wife Phebe Soule is the daughter of Jacob & Sarah (Shaw) Soule - see Index No. 70,985 on page 69.
- Note-26: Approved lineage is thru husband, the son of Thomas & Zilpha (Bradford) Loring. However, wife Rebecca Soule is the daughter of Ephraim & Rebecca (Whitmarsh) Soule - Index No. 31,835 on page 62.
- Note-27: Approved lineage is thru second wife, Sophronia Dennison, the daughter of David & Mehitable (Soule) Dennison. See Index No. 31,978 on page 76. However, husband Samuel Soule is the son of James & Martha (Curtis) Soule. See Index No. 70,987 on page 69.
- Note-28: Approved lineage is from wife, Margaret Snow Wallace daughter of George & Martha B. (Snow) Wallace. However, husband William Gore Soule is the son of Enos Chandler & Helen L. (Gore) Soule and the grandson of Enos & Sarah (Pratt) Soule - Index No. 31,833 on page 62.

## EPILOG

After ten months and untold thousands of hours of effort, this task is finished. Deo Gratias! Your authors are agreed that we would never have started had we realized in the beginning the hard work, the long hours - in short, the enormous magnitude of this formidable and tiresome undertaking. We have had invaluable assistance from many others for which we are grateful. There are too many to name here - but each helper, named or unnamed, is hereby designated an Honorary Co-Author! Evelyn Huntly spent many dirty, dusty hours endeavoring to decipher or rescue nuggets of priceless information from holographic records three-quarters of a century old. Subsequent severe damage by the disastrous fire of 1947 in the files of the General Society of Mayflower Descendants helped the fading of age. Donald Henry Maguire has pored over Maine Archives and Maine Town Records as well as trudged thru dozens of Maine Cemeteries seeking out and recording gravestone inscriptions of Soule families so to-day we know much more than ever before about a large percentage of the ancestral families named in the foregoing pages. Wilma & Harry Davidson have done the same heroic task for southern Michigan and northern Indiana. Harold Page Soule spends much of his retirement leisure driving throughout the West and sending in a steady flow of photographs - Soule gravestones, Soule street signs and other valuable memorabilia. William John Soule has done exhaustive and dependable research on the Alburg, Vermont families. Many others, from Honolulu to Texas and New York, have contributed copies of family bibles and hastened to respond to phone or mail requests for verification and updating information to provide this end product. Consequently, we are confident that this is an accurate reference work which should benefit prospective members of the Society and facilitate the review of applications by Historians of the several state Societies and Historians General, present and future. We have detected no lines which do not lead legitimately to GEORGE SOULE of the Mayflower although several lineages have been approved where the "cart has been hitched to the wrong horse" so to speak. Those have been fully annotated and explained.

Records of the General Society and of SOULE KINDRED have both been enriched. On balance, it appears that Kindred records have contributed more to the Society than the Society has contributed to the Kindred - especially in the early years and from New England residents. However, the exchange has definitely been a two way street. There were only a few of the many hundreds of Society records examined which could neither benefit from nor contribute to Kindred information. Of course, the firm policy of the Society not to release information from the lineages of active members without the permission of the member, has been scrupulously observed. As a matter of practical application, there were very few instances where the Society member or the same family was not also a Kindred member who had already disclosed such otherwise privileged information. In at least one instance key information had already been obtained from public vital records.

Discrepancies, differences, disagreements and inconsistencies between two or more sources regarding the same presumed fact were the rule rather than exception. Reconciliation of these variances has been the hardest part of the task. We hesitate to call them "errors" - although some are obviously in that category. Ridlon, accepted as the principal or only "Reference" in support of the vast majority of the approved lineages, is the major contributor to dubious information in the Society's records. On the other hand, we have been loath to reject summarily every item taken

from Ridlon in conflict with advice or "tip" picked up elsewhere. Based on averages alone, Ridlon must certainly be correct sometimes! Far too many genealogical researchers grasp at anything in print as proof. It is far safer to depend on a record made at the time by a competent and literate observer. That alone is truly valid proof. Any other record qualifies solely as evidence which should be supported by completely independent sources. A classic example is a gravestone record. The date of death certainly qualifies as a high degree of creditable evidence but the date of birth on the same stone may well be suspect unless or until supported by earlier evidence. Each major difference in dates and / or places has been evaluated and adjudicated in the light of this philosophy.

Our views concerning Ridlon, strongly reinforced as the result of the reconciliation task outlined above, are in full harmony with those of two impeccable former Historians General of the Society as excerpted below:

(1) GEORGE ERNEST BOWMAN in The Mayflower Descendant 30:121 (1928) "It is exceedingly unfortunate that Rev. G. T. Ridlon's 'Contributions to the . . . . Genealogy of the Families named . . . . Soule' published in 1926, should contain such a remarkable number of errors. Apparently the compiler paid little attention to probate and land records; and even the town records of births, etc., and the church records of marriages, baptisms, etc., seem to have been ignored in many cases. The numerous errors noted in the present article, . . . . are but a very small proportion of the scores of errors I have already discovered in his work, in connection with claims of Soule descent which have come to my attention. For convenience his work here will be called the Soule Genealogy."

(2) WALDO CHAMBERLAIN SPRAGUE in The American Genealogist 38:164 (1962) "It is not really a genealogy of a single family as usually known, but does purport to give the descendants of George Soule, the Mayflower Pilgrim. However, it has many conflicting statements and uncertain lines, so that often it is not clear what is documentary evidence, what is traditional, or what is merely the opinion of the author. There are also many confused statements; . . . . its statements should always be checked with contemporary documents and verified."

There have been problems other than Ridlon. On page 86 we explain the many conflicts in the use of variants in the spelling of the Soule surname and the solution we have adopted. We have commented at length above on the discrepancies between dates and places of births, marriages and deaths with the principals involved in effecting a reconciliation and adopting firm data. Fortunately, much less frequent in appearance is the apparent practice of some applicants to change the given names of their ancestors as well as their own. Merely in passing comment and without raising the potentially sticky legal question of the validity of such changes, we mention the case of Lafayette H. Soule who was by mere chance identified as the man named in public records during his lifetime as Fayette Hull Soule. Both town and state records carry the birth of one Nellie May; some years later Ridlon names a Katherine May; years later Kathryn May appears in the Society Lineage records and the Mayflower Index - with date and place of birth identical in each instance! We found other similar puzzles. Why? What should be done about it? Your guess is as good as ours! Inaccurate or beclouded - perhaps even "convenient" memories, have produced several confusing discrepancies in dates and places of births, marriages and deaths of recent generations -



where the Society has always accepted the applicants sworn statement on all details regarding personally known ancestors. Admittedly, these discrepancies are in the minority. However, with universally required recordation of all vital statistics since 1923, it seems that there are sufficient variations of this nature to speculate that eventually the Society might require supporting certified copies of official records concerning all events occurring subsequent to that critical 1923 date. We are merely speculating on this - neither proposing nor recommending, nor opposing such a policy.

+ + + + + + + + + +

The April 1970 "350th Pilgrim Anniversary" issue of the prestigious NEW ENGLAND HISTORICAL AND GENEALOGICAL REGISTER contained a very illuminating article on the GENERAL SOCIETY OF MAYFLOWER DESCENDANTS. It does seem to provide a fitting companion piece to the foregoing article on SOULE LINEAGES accepted by the Society. Consequently, we have secured special permission from Editor (and Soule cousin) Gilbert Harry Doane of THE REGISTER to reprint the following

### NOTES ON THE GENERAL SOCIETY OF MAYFLOWER DESCENDANTS 1897-1970

Contributed by

MRS. ROBERT M. SHERMAN, Warwick, R. I., Secretary General  
MRS. LESTER A. HALL, Plymouth, Mass., Historian General

Throughout the nineteenth century, America was awakening to its Pilgrim Past, but not until negotiations were underway for return of Governor Bradford's precious manuscript history "Of Plimmouth Plantation" was any society formed by proven descendants of the Mayflower passengers. In 1897, the very year of the manuscript's triumphant return, the General Society of Mayflower Descendants was organized at Plymouth, Mass., as a federation of the four existing state societies—New York (founded 1894), Connecticut (1896), Massachusetts (1896), and Pennsylvania (1896)—its object "to secure united effort to discover and publish original matter in regard to the Pilgrims."

Over 33,000 persons have been granted membership in the Society since that time. No one person has been more responsible for this growth than the late George Ernest Bowman (1860-1941) who laid a firm foundation for genealogical investigation of Pilgrim descendants by editing and publishing for the Massachusetts Society of Mayflower Descendants from 1899 to 1937 *The Mayflower Descendant*, a magazine containing many of the earliest vital, land, and probate records of Plymouth Colony towns, together with Pilgrim genealogies based on his study of those records. In a day when most genealogies were an indiscriminate collection of fact and fallacy from many unnamed sources, Mr. Bowman weighed his evidence and documented his conclusions in a manner which has won the respect of the ablest genealogists ever since his day. He was one of the founders of the Massachusetts Society of Mayflower Descendants in 1896 and of the General Society in 1897; he served as the first and



*Notes on General Society of Mayflower Descendants*

only Secretary of the Massachusetts Society until his death in 1941 and was the first Secretary General of the General Society and became its fifth Historian General (see memoir in *THE REGISTER*, Vol. 96, p. 78-79, Jan. 1942). Although to many who sought to become members of the Mayflower Descendants he seemed unduly meticulous in his demands for proofs of the links between succeeding generations in a Mayflower lineage, it was this very insistence which established the high standards which have been upheld to this day by his successors as Historian General, the title given the genealogist of the General Society.

Of the one hundred and two passengers aboard the Mayflower, half died the first winter, and the remainder represent twenty-three families "known to have left descendants." Thus everyone who claims John Alden as ancestor has in fact four Mayflower ancestors, John, his wife Priscilla, and her parents, William and Alice Mullins. The late Governor General Lewis E. Neff, through research in England and Holland had obtained names of children of Mrs. John Carver, of a daughter of John Turner, of some children of Bartholomew Allerton, of eight grandchildren of John Crackstone, and of nine children and some grandchildren of Moses Fletcher. None of these genealogical finds has yet resulted in locating present day descendants of these additional passengers and the official list continues to number twenty-three families. A number of members have proved descent from half or more of the passengers, but no one has yet proved descent from all twenty-three families.

Among the notable persons now members of the Society are five State Governors; America's first astronaut, Alan Shepard (an honorary life member of the New Hampshire Society); several movie stars. Presidents whose lineages entitled them to membership were John Adams and his son, Ulysses S. Grant, Franklin D. Roosevelt, William Howard Taft, and Zachary Taylor. President Taft became a member of the Society while he was in the White House.

The most significant publication of the General Society is the *Mayflower Index*, first printed in two volumes in 1932 and revised and reprinted in three volumes in 1960, an alphabetical listing of names from the lineage papers of all members to those dates. In these books the numbering system enables the reader to follow any member prior to 1960 back to his Mayflower ancestor.

Today the objects of the Society have been expanded beyond that simple original sentence, and in keeping with the exhortation "to transmit the spirit, the purity of purpose and steadfastness of will of the Pilgrim Fathers to those who shall come after us", more than one million copies of the Mayflower Compact are distributed annually by the state societies to schools and organizations. The objects further state that the Society is to "perpetuate to a remote posterity the memory of our Pilgrim Fathers. To maintain and defend the principle of civil and religious liberty as set forth in the Compact . . . To cherish and maintain the ideals and institutions of American freedom, and to oppose any theories or actions that threaten their continuity . . . and to authenticate, preserve and mark historical spots made memorable by Pilgrim association."

*Notes on General Society of Mayflower Descendants*

In this anniversary year, the Society hopes to bring forth the first volume of its long awaited "Lewis E. Neff Five Generations Project"—the most extensive genealogical research program ever attempted by any hereditary society. Each Mayflower passenger will be traced by *female*, as well as male lines through the fifth generation, in many instances linking Revolutionary soldiers to their Mayflower ancestors. Twenty genealogists, many recruited by the late Mr. Neff, all descendants of the Pilgrims, are giving their time to the Project, with completion hoped for by 1980. Other phases of the Society's 1970 celebration include tours to the England and Holland of the Pilgrims; support of a commemorative postal stamp designed by a member; striking of a commemorative medal; and financial support of the Plymouth 350th Anniversary Committee.

By 1963 a society had been established in each of the 50 states and the District of Columbia. Today, in January 1970, the membership rolls total more than 14,000. The General Society's publication, *The Mayflower Quarterly*, a magazine of state and General Society news and articles of Pilgrim interest was established in 1935 shortly after the demise of the *Mayflower Descendant*. It is sent directly to each of those members and to genealogical and historical libraries in forty-nine states. Each state society determines its own methods of fulfilling the Society's objects, some sponsoring speakers on Pilgrim topics, others placing books on Pilgrim history and genealogy in libraries, printing genealogical data from lineage papers, financing publications on the Pilgrim period, or publishing hitherto unprinted vital statistics of Plymouth Colony towns.

The General Society maintains its headquarters in Plymouth, Mass., within a stone's throw of the Rock on which the landing was made three and a half centuries ago. The beautiful mansion now known as the Mayflower Society House was originally constructed in 1754 for Edward Winslow, great grandson of the Pilgrim (later Governor) Winslow. The house has more than doubled its original size under the able guidance of the Colonial architect Joseph Chandler. It is now furnished with pieces such as it might have originally held, with rugs, portraits and smaller items, which give it the appearance of a home whose owners had just stepped out to visit. In the front parlor Ralph Waldo Emerson married Lydia Jackson, daughter of one-time owner Charles Jackson in August 1835. At the edge of the well kept garden is the Neff cottage, said to have formerly been a kitchen moved to its present location for use as a tea house. This has been fitted out as a fireproof vault to house the lineage papers of all persons who have ever been members of the Society. Here too is the office of the Historian General and a growing library of historical and genealogical information pertaining to the Pilgrims and their descendants. Although the Library is open for use, lineage papers are "closed" except to state historians in pursuit of information to prove the lineage of a prospective member.

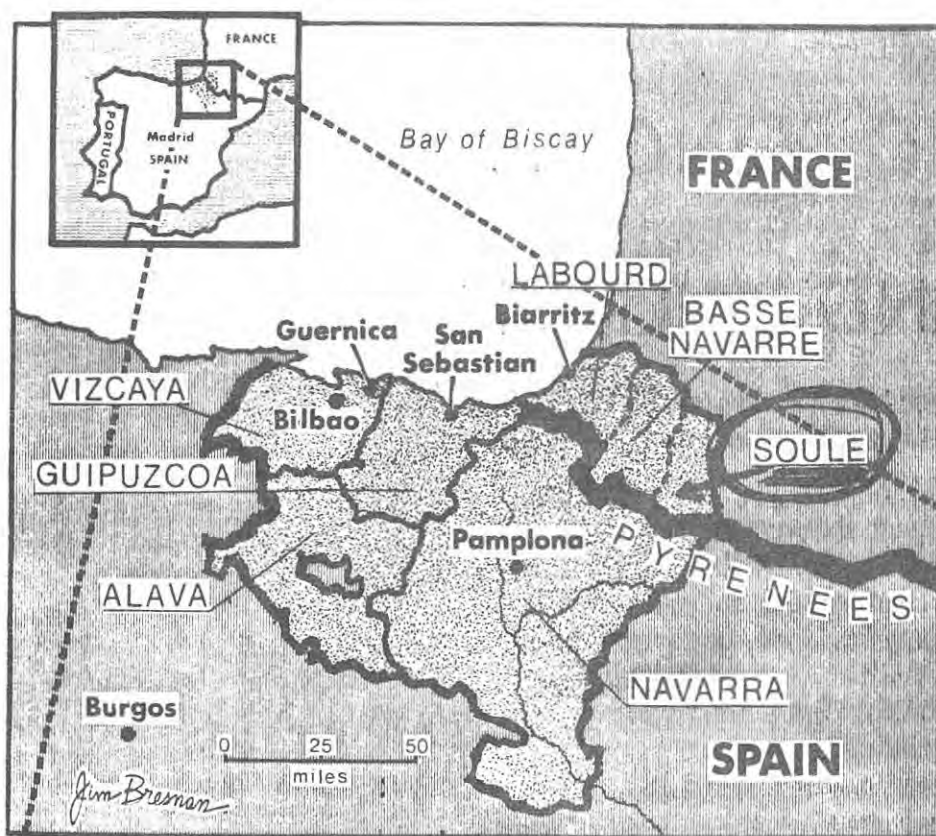
Although membership is not invitational, applicants must have the signatures of two members "who shall vouch for the applicant." Forms may be requested through state secretaries whose addresses are available from Society Headquarters at PO Box 297, Plymouth, Mass., 02360.

Some sources for the above article were: *History of the General Society of Mayflower Descendants 1897-1965*, a pamphlet by Waldo M. Allen (reprinted in the 1966 and 1968 editions of the *Rhode Island Society Lineage Book*); *Mayflower Quarterly*, vol. 28, no. 3, p. 4 (1963); and "The First Record Book of the General Society of Mayflower Descendants" (Mss).

## OUR BASQUE ORIGINS?

B-2 Los Angeles Herald-Examiner, Thursday, Dec. 10, 1970 A

### Concentrations of Basque People in Spain



Arrow points to areas of dense population of Basques in Franco's Spain.

See also SOULE NEWS-LETTER 1:2 (Jan 1967), 2:114-115 (Oct 1968) and 4:175 (Oct 1970) for previous comments on the subject of the possible Basque Ancestry of the SOULE families!

### "Snippet" From GOURMET

Great restaurateurs and hotel owners who study the art of hospitality often talk of their mothers in their private moments. (Henri Soulé used to talk about his mother's plain cooking in his Basque home country, and his favorite dish was brandade de morue "the way Maman made it." He would serve it to close friends at three in the afternoon, when red-blooded executives were recovering from their luncheon Martinis and getting ready for their predinner Martinis.) Frey is no exception. He remembers that his mother took great care with her flowers.

Cousin Paul Simmons of Arizona has suggested a possible means of

establishing statistical evidence of Soule descent from Basque ancestry. According to him, 90% of all pure Basques have B-negative blood type whereas only 2% of all other Europeans and all Americans have B-negative blood. Unfortunately, Cousin Paul hasn't provided us with citation to the source of his information. If confirmed by medical authorities and deemed significant by statisticians, we are optimistic that a majority of our readers tracing descent from George Soule of the Mayflower would agree to report their blood type and their generation from the immigrant ancestor. As many of our readers will recall learning in biology, one Johan Gregor Mendel (1822-1884) did extensive research on plants resulting in the promulgation in 1866 of what has since become known as



"Mendel's Law" - a repeatedly proven and valid scientific theory relating to the mathematical probabilities in distribution of inheritance of dominant and recessive characteristics in each subsequent generation. Hopefully, the dilution of Soule blood in the intervening centuries and the characteristics of B-negative blood will not have eradicated completely the possibility of reaching even reasonably valid conclusions as to our possible Basque ancestry; perhaps also as to the probable number of generations our immigrant ancestor's forefathers had resided in England after migrating there from France - if they in fact did so! We foresee many things the experts will want to consider in reaching any conclusions as to feasibility. For example, how big a sample will we be able to offer for analysis? As a wild guess we might estimate as many as a thousand - perhaps considerably "more or less". In remoteness from the base we must immediately resort once more to a guess. We doubt that we'll be able to produce a blood report from anyone in the 8th Generation and even more positive that there is no one as yet born in the 16th Generation. We do know of perhaps eight or ten in the 15th Generation; possibly as many in the 9th. Solely by the process of elimination (we've never made any attempt to make a "nose count" of the known living descendants - and doubt a favorable "cost-benefit ratio") we "guestimate" that the bulk of our sample would have to come from the 10th, 11th and 12th Generations - with the peak showing in either the 11th or 12th.

To start the ball rolling, we're asking Cousin Paul to report the source of his information; also to explore and develop a feasibility evaluation through the contacts he has suggested. Concurrently, we are asking our members in the medical profession to offer their opinions and suggestions - or those of their hematologist friends. If Paul's inquiries and the medical concensus should be favorable, we propose to query our computer oriented statisticians for their opinions and in-put data needs. Perhaps we'll reach sufficient conclusions to include a questionnaire on the needed information with our 1972 billings - say along about next Thanksgiving Day! In the meantime, anyone volunteering their ideas or help on this project should write SOULE KINDRED at Post Office Box 1146, Duxbury, MA 02332.

## MILESTONES (Vital Statistics)

Married in the Latter Day Saint's Temple at St. George, Washington County, UT 19 Dec 1970 JOSEPH FRANKLIN<sup>10</sup> WHITE to Pamela Gayle Petty, daughter of Mr. & Mrs. Cleo Manoya Petty. The bridegroom was born at Otto, Big Horn County, WY and is the son of Willis Franklin & Rhea<sup>9</sup> (Porter) White of Casper, WY with descent thru the Porter line via Chauncy Warriner<sup>7</sup>, Sanford<sup>6</sup> (who migrated with other Mormons to Utah in 1847), Susannah<sup>5</sup> (West) (Tanner) Porter, Thomas<sup>4</sup> West, William<sup>3</sup> West and Susanna<sup>2</sup> (Soule) West to George<sup>1</sup> Soule of the Mayflower. (Kindred No. 735201)

Married at Riverdale Baptist Church, Riverdale, Prince George County, MD 2 Jan 1971 THOMAS LEROY<sup>11</sup> SOULE to Virginia Ida Lawrence, daughter of Colonel & Mrs. Allan R. Lawrence, USA Retired, of Baltimore. The bridegroom, born in Old Providence Hospital at Washington, DC 25 Jul 1945, is the son of Louis Giles<sup>10</sup> & Annie Opalene (Wates) Soule with descent thru Asa Lewis<sup>9</sup>, Giles<sup>8</sup>, Lewis William<sup>7</sup>, John<sup>6</sup>, William<sup>5</sup>, Deacon Ezekiel<sup>4</sup>, Joshua<sup>3</sup> and John<sup>2</sup> to George<sup>1</sup> Soule of the Mayflower. (No. 333247612)

Married at Base Chapel in Karamursel, Turkey 23 Jan 1971 JOHN ABERCROMBIE<sup>12</sup> MERRITT, IV to Marcia Elaine McDaniel, daughter of Mr. & Mrs. Kenneth L.



McDaniel. The bridegroom was born at Norfolk, VA 18 Dec 1949, the son of John Abercrombie<sup>11</sup> & Joan Athenasia (Paras) Merritt, III and the grandson of John Abercrombie & Sarah Elizabeth "Betty"<sup>10</sup> (Soule)<sup>8</sup> Merritt, Jr. with descent thru Fayette Fletcher<sup>9</sup>, Charles Edward<sup>8</sup>, Ambrose Latten<sup>7</sup>, Latten<sup>6</sup>, Nathan<sup>5</sup>, George<sup>4</sup>, Nathan<sup>3</sup> and George<sup>2</sup> to George<sup>1</sup> Soule of the Mayflower. (Kindred No. 533414X52)

Married in St. Mary's Church at Cortland, Cortland County, NY 23 Jan 1971 GAYLE PATRICIA SOULE to Richard David Sweeney, son of Mr. & Mrs. Frank Sweeney of Cortland. The bride is the daughter of Mr. & Mrs. Kenneth H. Soule of Cortland - possibly descended from one of the Soule families already resident in that area when Cortland County was set off from Onondaga County in 1808. (Kindred No. Cortland Co NY-NOIBN)

Married in Calvary Lutheran Church at Edina, Hennepin County, MN 20 Feb 1971 JAUQUELINE<sup>?</sup> SOULE to Daniel Wigart, son of Mrs. Nils Wigart of Edina. The bride, who was born at Minneapolis, Hennepin County, MN, is the daughter of Commander & Mrs. John Donald Soule, the granddaughter of the late Lawrence Merton Soule and the great-granddaughter of Alfred O. Soule. While the parentage of the latter has not as yet been established, we suspect that he was the son of Solomon<sup>8</sup> & Lucinda (Alger) Soule [See page 82 this issue] (Tentative Kindred No. 5353157)

Born in Prince Georges Hospital at Cheverly, Prince Georges County, MD 11 May 1970 ANGELA MARIE<sup>12</sup> SOULE, daughter of Donald Barry<sup>11</sup> & Sue (Jones) Soule and granddaughter of Louis Giles<sup>10</sup> & Annie Opalene (Wates) Soule with descent thru Asa Lewis<sup>9</sup>, Giles<sup>8</sup>, Lewis William<sup>7</sup>, John<sup>6</sup>, William<sup>5</sup>, Deacon Ezekiel<sup>4</sup>, Joshua<sup>3</sup> and John<sup>2</sup> to George<sup>1</sup> Soule of the Mayflower. (Kindred No. 333247612)

Born in Memorial Hospital at Lima, Allen County, OH 6 Jan 1971 - ? - SOULE, daughter of Mr. & Mrs. Freeman Soule, Jr. of Columbus Grove, Putnam County, OH. [The telephone operator insists there is no Soule listing in Columbus Grove; mail query is unanswered.]

Died in the Veterans Hospital at Fort Wayne, Allen County, IN 14 Aug 1970 HOBART F - ? - <sup>10</sup> SOWLES. He never married and was a veteran of WW-I. Born at Kendallville, Noble County, IN 13 Jan 1896, the son of Albert C. or E. & Alida C. (DePew) Sowle and grandson of Robert A - ? - <sup>8</sup> & Huldah J. (Jones) Sowle, his descent was thru Durfee<sup>7</sup>, Robert<sup>6</sup>, Joseph<sup>5</sup>, William<sup>4</sup>, Sylvanus<sup>3</sup> and Nathaniel<sup>2</sup> to George<sup>1</sup> Soule of the Mayflower. (Kindred No. 42231434)

Died at New Haven, CT 7 Oct 1970 DONALD LINES JACOBUS, just four days after his 83rd Birthday. Although no kin, we mention his passing in grateful acknowledgement of his substantial past help and advice in developing historical information on SOULE and related families. The REGISTER for January 1971, in featuring a five page eulogy, says of him "known to a circle of devoted friends as a wise and beloved counsellor and to the genealogical world as 'the dean of American genealogists' as well as the most prolific and accurate writer on genealogical topics".

Died at Berkeley, Alameda County, CA 9 Jan 1971 EDWARD LEE<sup>10</sup> SOULE<sup>1</sup>, Sr. He was born at Little Shasta, Siskiyou County, CA 9 Jan 1882, the youngest of ten children of Stephen Hogeboom<sup>9</sup> & Lucinda Maria (Boyes) Soule<sup>1</sup> with descent thru Ebenezer George<sup>8</sup>, George<sup>7</sup>, George<sup>6</sup>, Benjamin<sup>5</sup>, George<sup>4</sup>, William<sup>3</sup> and George<sup>2</sup> to George<sup>1</sup> Soule of the Mayflower. (Kindred No. 52352033X)

Died at his home 2525 Martin Avenue SE, Grand Rapids, Kent County, MI 29 Jan 1971 THEO JAMES "Ted" <sup>11</sup> SOWLE. He was born at Mount Pleasant,

Isabella County, MI 2 Jun 1912, the son of Sidney E - ? - <sup>10</sup> & Mary <sup>5</sup> (West) Sowle with descent thru Jacob Allen<sup>8</sup>, William<sup>7</sup>, Isaac<sup>6</sup>, Joseph<sup>5</sup>, William<sup>4</sup>, Sylvanus<sup>3</sup>, and Nathaniel<sup>2</sup> to George<sup>1</sup> Soule of the Mayflower. (Kindred No. 42233)

Died, as the result of wounds suffered in combat, in Vietnam 8 Feb 1971 Sp4 CHARLES HOWARD<sup>11</sup> SOULE. Born at Lewiston, Androscoggin County, ME 3 Apr 1951 the son of Everett Elmer<sup>10</sup> & Ellen Louise (Larrabee) Soule, his descent is thru Ernest Howard<sup>9</sup>, Elmer William<sup>8</sup>, Albion Paris<sup>7</sup>, Jesse<sup>6</sup>, Jedediah<sup>5</sup>, Jedediah<sup>4</sup>, Moses<sup>3</sup> and John<sup>2</sup> to George<sup>1</sup> Soule of the Mayflower. (Kindred No. 299562222)

Died at her home 535 Marietta Avenue, Swarthmore, Delaware County, PA 8 Feb 1971 EVELYN MARGUERITE (DAVIS) SOULE, wife of John Wayne Soule. Born at Connellsville, Fayette County, PA 29 Sep 1908, the daughter of John Brubaker & Kathryn (Brooks) Davis, she married into the Soule family in the Smithfield Street Methodist Church at Pittsburgh, PA 9 Aug 1940. Her husband is the son of Charles Wayne & Florence Jane (Van Trees) Soule with descent thru Fayette & Nellie ( - ? - ) Soule, Nathan H. & Salina ( - ? - ) Soule and Constant & Lucena (Brace) Soule of Richland, Oswego County, NY from a Rhode Island ancestor as yet unidentified. (Kindred No. Richland NY-NOIBN)

Died at North 1821 Monroe Street, Spokane, Spokane County, WA before 2 Mar 1971 (found dead early on that date) VICTOR WINFIELD<sup>10</sup> SOWLE. Married 23 Apr 1939 to Patricia McBee (but apparently later divorced), he was born at Banner Township, Garfield County, OK 6 Oct 1914, son of Charles Lucius<sup>9</sup> & Katie Gladys (Wilson) Sowle with descent thru Bronson Crocker<sup>8</sup>, Eli L - ? - <sup>7</sup>, John<sup>6</sup>, Lemuel<sup>5</sup>, Joseph<sup>4</sup>, Jacob<sup>3</sup> and Nathaniel<sup>2</sup> to George<sup>1</sup> Soule of the Mayflower. (Kindred No. 43122143)

Died at Portland, Cumberland County, ME 20 Mar 1971 GEORGE EDGAR<sup>9</sup> SOULE. Married at Portland 16 Jun 1909 to Mary Genevra Knight of Falmouth, the daughter of William Edgar & Ella Dorcas (Baker) Knight, he was born at Portland 6 Jan 1887, the son of George Orville Dewey<sup>8</sup> & Susan Maria (Lovell) Soule, the grandson of George Nelson<sup>7</sup> & Sarah Elizabeth (Brewer) Soule with descent thru Benjamin<sup>6</sup>, John<sup>5</sup>, Barnabas<sup>4</sup>, Moses<sup>3</sup> and John<sup>2</sup> to George<sup>1</sup> Soule of the Mayflower. [See page 65 this issue.] (Kindred No. 29324D16)

Died in Sheehi Nursing Home at Butler, DeKalb County, IN 25 Mar 1971 ADA MARIE<sup>7</sup> SOWLES. Born in Indiana 12 Apr 1902, she was the daughter of Fred & Addie (Light) Sowles, the grand-daughter of Herman Wesley & Helen ( - ? - ) Sowles and the great-granddaughter of Hiram & Sarah (Boyer) Sowles. Her further ancestry is obscured by our lack of progress in tracing the families in record barren New York state. Survivors include her sister, Mrs. Floyd (Verna) DeLaney and her brother, Shirley Sowles - both of Angola, IN. (Kindred No. Wayne Co NY NOIBN)

## SAVE VITAL RECORDS

Many SOULE KINDRED members, trying to help our work by collecting and reporting family vital records from local sources, have reported a sense of frustration by an unco-operative or negative attitude on the part of record custodians. Apparently, there are very few remaining registries where such records are "open to the public". Places where the staff tries to be courteous and helpful to the searcher appears to be an even greater rarity. Laws and court orders, ostensibly designed to protect the privacy of individuals particularly in such matters as illegit-



imacies, actually do exist in many places. Arguments offered in support of such laws suggest that other motives may also be involved. Our experience has led us to conclude that divers other factors definitely are considerations - some real and valid; others unrealistic and of doubtful validity.

We would place at the head of the list of such factors the combined impact of the often mentioned population explosion and the serious financial straights of most public agencies. The former has generated a vastly expanded work-load of more and more births, marriages and deaths to be recorded. The latter mitigates against adequate staffing and a pay scale sufficient to attract and retain the highest type employee - thereby fostering spread of the tragic and potentially fatal American national disease of to-day: "Pay Day and Quitting Time!" The major symptoms are rapidly escalating demands from all workers for more money and less work.

Next in order we would place the condition of the records themselves. This frequently stems from the energy, ambition and foresight of the initial registrar, clerk or recorder. The first Town Clerk in more than one New England town voluntarily but diligently copied all records of the parent jurisdiction and required all new arrivals in their bailiwick to record details on themselves and their family regardless of prior recordation elsewhere - and resultant confusion to researchers of to-day. This thorough and conscientious initial record keeper invariably made an index as he went along - even though perhaps only for each book and by first letter of the surname. Some indices were more complex. Of course, it was most logical for successors to conform rather than to change. Our nation's "Great Depression Era" of the early to mid-1930s spawned many "make work" projects financed with Federal funds through the WPA - the Works Progress Administration. Unemployed but capable white-collar men and women were put to work on such tasks as indexing and even copying deteriorating early records of all kinds. Indices made under WPA auspices have frequently been continued. Unfortunately, some indexing was stopped with the demise of the WPA. Even more tragically - to the historian at least, many potentially valuable indexing projects were never even started! Some records are on cards or other loose leaf system. SOULE KINDRED uses this technique. We frequently suffer mental agonies and waste much time hunting for misfiled records. Consequently, we have every sympathy with the custodians of such records who are very loathe to permit access to outsiders. Poor condition of vital records in some jurisdictions probably dictates the frequently found requirement that the applicant for a record copy must provide a specific date and place; frequently also is the requirement of an extra fee for a search covering even a relatively brief period. Costs for copies of vital records now range up to \$3.00 each. The former gracious practice of refunding the fee if no record is found gave credibility to "No Record Found" reports. We are inclined to resent and view with suspicion the current universal custom of collecting the fee without any substantial evidence that an honest search was made and the desired record really does not exist.

In this context, we are taking the liberty of copying the following article for the information and guidance of our many readers. It has the above title and is from

THE GENEALOGICAL HELPER - Logan, Utah - March 1971

What is happening to the Vital Records in your State or County? Do

your State and County officials realize the great importance of preserving and making these records available for searching?

The Everton Publishers, Inc. has received several letters and articles concerning this problem from various areas throughout the United States. An article "It Happened in Indiana" sent to us by MB, Crawfordsville, Indiana, appeared in a small town paper as follows: "They call it 'the tragedy in Clark County.' 'They' are the members of the Indiana Historical Society, The Indiana Historical Bureau and the Indiana Library and Historical Board.

. . . How tragic you consider the Clark County incident probably depends upon whether you're a history buff. Here's what happened. Clark County, as most Indiana counties seem to do sooner or later, decided to build a new court-house and knock down the old one. Recent records were moved. An estimated 100 cubic feet of older records, dating back to territorial days, were left in the basement when the wrecker's ball and bulldozer went to work last May 4. The whole mess - brick, plaster, masonry and twisted pipes - were churned to-gether and dumped into several landfills.

When word of the operation reached the state government level, the Indiana Historical Society and State Library organized a salvage team . . . They worked about a week in the water-soaked landfills and recovered about 1,500 pages of material, some dating to before Indiana became a state in 1816. The part saved was only a tiny proportion of the part lost. And most of the rescued pages were in bad condition. What sickened the professional and amateur historians was the fact that the lost papers may have included documents and even letters signed by George Rogers Clark and possibly the early records of Clarksville, the first American settlement in the Northwest Territory . . . The loss of old county records has been a too frequent occurrence, most often by fire but often because nobody wanted to sort out the material stored in dirty old basements . . . "

Mrs. ACMcA of Bedford, Virginia sent us a newspaper article from THE WORLD NEWS, Roanoke, Virginia concerning the burning of the Botetourt County Courthouse in Fincastle, Virginia. This historic courthouse was completely destroyed by a pre-dawn fire. The treasurer's records and Circuit Court Records, including deeds and wills, were saved because they were in fireproofed vaults, but the records of the commissioner of revenue's office were destroyed. Although most of the vital records of this courthouse were saved, how important it is for County Governments to have the vital records in their keeping microfilmed and stored in fire-proof vaults.

Zerox copies of a letter sent out by the Connecticut Society of Genealogists, Inc., 16 Royal Oak Drive, Hartford, Connecticut 06107 were sent to us by SCJ of Salt Lake City, Utah and also by Mrs. RDK of Princeton, N.J. This letter certainly concerns all genealogists. Parts of it are:

" . . . THIS IS IMPORTANT. It came to our attention some months ago that the Division of Vital Statistics of the U. S. Dept. of Health, Education and Welfare is 'working with a study group of the Public Health Conference on Records and Statistics to write Model regulations to supplement the Model State Vital Statistics Law.' We obtained from the Director in Washington, a copy of the Model Law referred to. We also obtained the names of the Chairman and Committee members of the Study Group. On September 2, 1970 we sent a letter to 89 Genealogical Societies



in the Nation, suggesting that the Societies join to-gether to obtain relief from the present and future restrictions which are closing vital statistics in the various states from Genealogical Research. We have received many replies from our letter, all of whom have stated that they are with us 100%, and ask how they can help. We expect to hear from all the Societies as soon as they have had a chance to talk this over with their members and Directors.

WHAT CAN YOU DO? We know that many of our members are also members of other Genealogical Societies. We would request that you ask these other Societies to join us in this endeavor, if they have not already done so . . . . "

This trend to close or restrict vital records is not just happening in Connecticut, but in many other states. Genealogical research as a hobby or profession is enjoyed by thousands of people in this country and it is through their efforts that the heritage and history of this country is becoming better known. It is alarming to contemplate that public records, open to our ancestors for nearly two hundred years, would now be closed, and it is certainly depriving the public of rights that are surely theirs. As genealogists or good citizens of this great country, it is your duty to get "the ball rolling" in your county or state toward the preservation and availability of vital records before it is too late.

+ + + + + + + + + + + + +

HISTORIAN'S COMMENT: This is obviously a matter of grave and long range importance to every member of SOULE KINDRED. We will follow developments closely and keep you fully advised. Hopefully, all will understand how each added task undertaken will result in further slippage of our already far over-committed capabilities. Hundreds of unanswered letters will just have to go unanswered a bit longer. Please bear with us!

## In the news . . .

From THE PILGRIM NEWS:

### A QUESTION OF PRONUNCIATION

The pronunciation of one's surname appears to be a matter of personal choice. The erudite George Ernest Bowman, a notably accurate and well informed authority on Mayflower family histories, says George Soule of the Mayflower, and his family for many years after his death "made it rhyme with coal, hole, bowl, etc." (Mayflower Descendant vol. 14, p. 129-130, July 1912). This pronunciation holds for today for the majority of the family. However, "Sool" (to rhyme with "cool") is not at all uncommon and many are adopting SOULE (with the accent on the last syllable to rhyme with Soo-lay!) The large Pennsylvania Soule family seems to like "Soltz" or something close to that.

— Soule Kindred Newsletter

Soule cousin Edwin G. Sanford, Reference Librarian, Social Sciences at The Boston Public Library is the author of "THE PILGRIM FATHERS AND PLYMOUTH COLONY a bibliography" published in December 1970 as a contribution to the 350th Anniversary observance of the landing of the Pilgrims at Plymouth. It is a complete biographical survey of books and articles pertaining to our Pilgrim ancestors published during the past fifty years. We recommend it highly as a guide to anyone interested in reading more on this fascinating subject. Copies may be obtained from the Publications Office, Boston Public Library, Boston, MA 02117 at \$0.65 per copy, postage included.

"ASHLEYS OF AMERICA", the excellent quarterly news bulletin of the recently organized Ashley Family Association, reports in their January 1971 issue on the attendees at their "First Reunion" 29 Aug 1970. Included are Edna Sowle and Hazel (Sowle) Smith, both of North Dartmouth, MA.

+ + + + + + + + + + +

Sandra Soule Ashley '58 is the author of an article headlined "The Senior Class goes political" appearing in the Winter 1971 issue of WELLESLEY ALUMNAE MAGAZINE. Mrs. George Ashley wrote an enthusiastic three page illustrated article entitled "We Have the Show House!" in the Winter 1971 issue of BOSTON JUNIOR LEAGUE BULLETIN. The latter is footnoted by the editor "Mrs. Ashley was Editor of the BULLETIN 1967-1969 and is presently serving on the Board of Managers as Chairman of the Ways and Means Committee in charge of the Show House". The aim of the Boston Junior League's annual "Show House" is to raise funds for Junior League projects in the community. We have also learned that Mrs. George H. Ashley of Weston, MA is Vice-Chairman (recently upped from Secretary) of the Weston Republican Town Committee and is deeply involved in numerous other community activities; mothers three children aged 13, 11 and 5; is a Nantucket surf fisherman (bluefish) and plans family camping trips. This eminently qualified candidate for inclusion in "Who IS Who in the Soule Family" is Sandra "Sandy" Gesell<sup>12</sup> (Soule) Ashley - Mrs. George Harvey Ashley. (Soule Kindred No. 53341572211)

+ + + + + + + + + + +

Double Soule cousin (he has two lines thru his mother to George<sup>1</sup> Soule of the Mayflower) Gilbert Harry<sup>10</sup> & Susan "Sue" Howland (Sherman) Doane leave 6 Apr 1971 for a European Tour of several weeks duration. We envy them particularly their scheduled steamer cruise thru the Greek Islands of the Mediteranean. They are due back in time for him to appear on the platform for the Seminar on New England Ancestries to be held in Boston 17-21 May 1971 under the sponsorship of the New England Historic Genealogical Society. Incidentally, we may be divulging prematurely a "state secret" but our distinguished cousin relinquishes on 30 Jun 1971 the editorship of the authentic and venerable New England Historical and Genealogical Register. The REGISTER is now in its 125th year of continuous publication. (Kindred Nos. 5351145 and 535181)

+ + + + + + + + + + +

From THE GEORGETOWNER: MAY DAY, MAY WINE AND MAYBE - MARRIED NEXT MONTH

May flowers, the direct result of April showers (if the song is to be believed), have been a welcome sight to countless ages of man since very ancient times.

Romans indulged in a Flora-honoring festival that lasted a full week, and the people of medieval England greeted the return of spring with "may-ing expeditions to gather boughs of hawthorn for the decoration of their houses and themselves.

May Queens sat about in floral bowers, graciously surveying the sports and contests taking place on the village green and the exuberant dancers whirling around Maypoles.

When the Puritans came to power under Cromwell, these gay festivities were forbidden, but with the Restoration the customs were revived with even greater enthusiasm. It is ironic that the Pilgrims, who deplored these frivolities, should have set sail on a ship named MAYFLOWER!

HISTORIAN'S COMMENT: The foregoing bit of light reading is not offered as valid history. It may be authentic in every respect but we are not willing to vouch for it!

+ + + + +  
From Washington's HOLY TRINITY CHURCH Weekly Bulletin for 28 Mar 1971:

THE THINKING CHAIR (Pragmatic Prayers for Today) by one of our parishioners, Mrs. Adelia Rosasco Soule, has just been published. All are invited to visit with Mrs. Soule, enjoy a cup of coffee, and try THE THINKING CHAIR after the 9, 10, 11:30, 1 and 5:30 Masses next Sunday in the high school cafeteria. As the Foreword of the book says, "Mrs. Soule strikes her theme head-on in the first prayer and sustains it in each succeeding line."

If not available in your local bookstore, address the author at 1709 - 34th Street NW, Washington DC 20007. \$3.00 per copy, postage included.



# THE THINKING CHAIR

+ + + + +  
LORETTA MAY<sup>9</sup> (SOULE) KIMMEL of Minneapolis, MN has recently returned to her home after a four week session in St. Barnabas Hospital.



RUSSELL

"Rusty" SOULE

PORTLAND HIGH SCHOOL  
BIG TIME SWIM PROSPECT

HE SET A  
NEW ENGLAND  
100 YARD  
BUTTERFLY  
RECORD OF 55.09  
— BEAT THE OLD  
MARK OF  
56.2

THIS  
GUY CAN  
EVEN  
BEAT THE  
CLOCK



RUSTY IS COACHED BY  
HAROLD PAULSON, AND IS THE  
LATEST IN A LONG LINE  
OF P.H.S. STARS

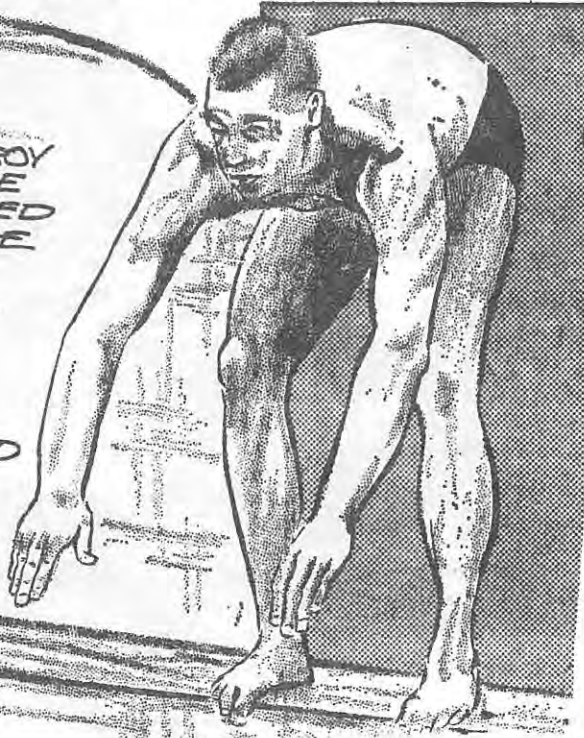
THEY  
SET THE  
RECORDS —  
I BREAK  
'EM

AS TOP SCHOOLBOY  
SWIMMER IN THE  
STATE, HE SMASHED  
THE OLD FREESTYLE  
100 YD. RECORD  
BY 1.4 — DOWN  
TO 49.9

— THEN SKIMMED  
2.8 OFF THE  
200 YARD  
RECORD —  
DROPPING IT TO 1:52:6

HE'S A  
JUNIOR NOW  
— JUST WAIT  
TILL NEXT  
YEAR //

Bill



RUSSELL "Rusty" CLARK SOULE was born at Portland, Cumberland County, ME 31 Mar 1954, son of Russell Franklin & Mary Evelyn (Higgins) Soule with descent thru Morton Clark & Lavina Edna (Hanson) Soule, Joseph A. P. & Fannie Maude (Pollister) Soule and John M. & Helen F. (Morton) Soule.



## SOULE KINDRED OFFICERS

W. F. Soules . . . . . President  
 Ben George Soule . . . . Vice President  
 Shirley Soule Smith . . . Secretary  
 Betty-Jean Haner . . . . Treasurer  
 Col. John Soule . . . . Soule Historian  
 George S. Soule . . . . Editor  
 Clara E. Hansen . . . . Indexer  
 Mrs. Alton Young . . . Liaison Officer  
 Bethany L. Smith . . . Youth Editor

§§ The Soule Kindred Newsletter is published four times a year (January, April, July, & October) by the Soule Kindred. Dues are \$5.00 per year and subscriptions will begin with the first issue of the current year. Late subscribers will be sent back issues for the current year. Checks should be made to: SOULE KINDRED  
 P. O. Box 1146  
 Duxbury, Massachusetts 02332



Cousin BEN GEORGE SOULE, Vice President of the Soule Kindred, was the Toastmaster of the Annual Dinner Dance of the Navy-Marine Post no. 472, American Legion on Sat., April 3, 1971.

Grace Graham (Mrs. Will) Long, the Berkeley lady whose ancestors include five Pilgrims who came to America on the Mayflower—William Brewster, Stephen Hopkins, George Soule, Mrs. Brewster and Stephen Hopkins' young son, Gyles—exemplifies the spirit of the First Thanksgiving as she wears the Pilgrim mother's demure dress with apron and bonnet for her recital of the Mayflower Covenant at a recent church service. The

fat duck is authentic Pilgrim fare. His ancestors, along with wild turkeys, geese and deer contributed by Chief Massasoit's friendly Indian braves were served at the first feast. Pumpkin pie was not on the colonists' menu, Mrs. Long states, at right, but what's a little departure from tradition when a Mayflower Descendant is famous for her pies?

Berkeley Daily Gazette, Nov. 26, 1970



MR. AND MRS. HAROLD C. SOULE

... mark first 50 years

## Second Fifty Coming Up

The holiday season has been a round of happy family festivities for Mr. and Mrs. Harold C. Soule of 5009 Sierra Villa Drive, Eagle Rock.

It began with celebration of their golden wedding day, Nov. 24 and will continue until the new year dawns.

Their 50th anniversary was highlighted by a reception for 80 guests from near and far, given by their son-in-law and daughter Mr. and Mrs. Edward Hay (Trudy Soule) and sons Doug, Don, Jim and John; and by their son and daughter-in-law, Mr. and Mrs. C. C. Soule and chil-

dren, Davis, Jeanne and Diane, at the Hay home in Glendale, 2264 E. Glenoaks Blvd.

Featured was a "Then and Now Memory Room," in which photographs, music and mementoes of the "Then" and "Now" years were featured.

The Soules, both New Yorkers, were married Nov. 22, 1920 in Geneva, N.Y.

They came to live in Eagle Rock in 1941. Mr. Soule's father was an early settler, coming to the Southland from New York in 1903. He was the originator of "off-

season" celery production and sales in this area, and descendant of George Soule, the pilgrim, who was one of the 42 signers of the Mayflower Compact.

Harold C. Soule was in the automobile sales, supplies and equipment business until retirement. Mrs. Soule is an active member of St. Barnabas Episcopal Church and the Daughters of the King.

The two enjoy as hobbies, gardening, sewing, bridge, furniture building and trailering to the desert and mountains. 3 Jan 1971

(see page 46 for prior milestone recognition.)

Fire Chief KENNETH SOULE of Rowe, Mass. was quoted in U.S. News & World Report, March 29 1971, in regard to the benefits of the Yankee Atomic nuclear power station nearby. Besides a new library wing and new snow removal equipment, they have a new fire truck from Yankee's taxes. As for atomic hazards, Chief Soule says he is not the least concerned and is not even sure if the city of Rowe has evacuation plans in case of some nuclear catastrophe.

## Former Resident Is Promoted

### Soule Elected To New Post With Insurance Company

At a recent meeting of the Board of Directors at the home office of the Paul Revere Insurance Co. of Worcester, Charles E. Soule, 4 Harvey Lane, Westboro, was elected vice-president-underwriting.

Mr. Soule, a Dartmouth graduate and member of the executive committee of the local alumni association, is serving as chairman of the Board of the Central Massachusetts Heart Fund. He is a past president of the Friends of Lyman School, and has been prominent in national health insurance trade affairs. In 1956 Mr. Soule joined the Paul Revere organization in an underwriting capacity and, for the last three years, has served as second vice-president-underwriting. He was named one of Worcester's outstanding young men of last year.

He is a graduate of Memorial High School, class of 1952, and of Dartmouth College, class of 1956. He is the son of Mr. and Mrs. Albert F. Soule, Oak Street, this town, and is married to the former Elna Eayrs, daughter of Mr. and Mrs. Frederick Eayrs, School Street, also of this town. They are the parents of four children.

Soule Kindred nos. 225162 & 225371. The Middleboro Gazette, Middleboro, Mass., 25 Feb 1971.

JAMES H. SOULES of Hamilton, Texas, who until a few weeks ago was manager of the Hamilton Chamber of Commerce, was presented a plaque as outstanding Chamber of Commerce worker. It was largely through Soules' efforts that Hamilton was able to overcome bad publicity in the infamous "Dee Wedemeyer Associated Press Article" which ran nationwide last October describing Hamilton as a dying town.

Soules got enough good publicity for Hamilton out of that deal that Hamilton "wound up on the plus side."





MRS. G. G. SHADLEY

## Susan Soule Bride Of Mr. Shadley

ALGER — Miss Susan Theresa Soule and Gary Gene Shadley exchanged vows at 11 a.m. Saturday in Sacred Heart Catholic Church, Yarmouth, Me.

Mr. and Mrs. Merton L. Soule, 47 E. Main, Yarmouth, are parents of the bride and Mr. and Mrs. Everett E. Shadley Jr., Rt. 1, are parents of the groom.

Given in marriage by her father, the bride chose a floor-length gown of brocade and wore a shoulder-length veil held by a crown of pearls and lace. She carried roses and carnations.

The bride's sister, Diane Marie, was maid of honor while Miss Arletta Hill, Milo, Me.; Miss Marcia Mason, Mrs. C. G. Campbell and the groom's sister, Karen, were bridesmaids.

The bride's brother, John Michael, was ring bearer.

Best man was David W. Taggart, Brunswick, Me., and ushers included the groom's brother, Michael; the bride's brothers, Daniel and Merton Jr., and Paul T. Cunningham, Freeport, Me.

A reception was in the Westcustogo Inn, Yarmouth.

After a trip to the White Mountains in New Hampshire, the couple will reside at 128 Park Ave., Portland, Me.

The bride is a graduate of Maine Medical Center School of Radiologic Technology and employed at the center. The groom, an alumnus of Northwestern Business College, Lima, is serving in the Navy at Brunswick Naval Air Station.

Kindred no. 29324D17  
The Lima News,  
Lima, Ohio, 11 Oct  
1970. The Soule  
Kindred thanks Mrs.  
Harold G. Kerr for  
sending in the above  
newsclip.

## Grishaber-Soule

Immanuel Baptist church in Cedar Rapids was the setting May 30 at high noon for the marriage of Sylvia Grishaber daughter of Mr. and Mrs. Walter Grishaber, Cedar Rapids, and Robert E. Soule, son of Mr. and Mrs. Robert W. Soule, 1611 South street. Dr. Edward Roustio officiated.

The couple was attended by Mrs. James Leslie, Jr., of Fayetteville, Ark., sister of the bride, matron of honor, and Roy L. Swain of Columbia, Mo., best man. Maid of honor was Bonnie Wong, Cedar Rapids. Ronald Baker of Memphis, Mo., was groomsman.

Serving as ushers were Brad Soule, brother of the bridegroom, and Frank C. Land, Cedar Rapids, brother of the bride.

The reception was held in the church parlors immediately following the ceremony.

Following a wedding trip to Great Smoky National Park,

the couple will be at home in Kirksville, Mo.

The bride is a candidate for a Bachelor of Science degree in education, with a major in art, at Northeast Missouri State college, Kirksville.

The bridegroom is a 1970 graduate of Northeast Missouri State college, with a Bachelor of Music education degree.

Kindred no. 535129312  
The Burlington Hawk  
Eye, 30 May 1970.

We thank Robert W. Soule for the above newsclip.

## Christine Soule, Mr. Thompson Jr. Marry in Texas

A HOME IN New Orleans is planned by Robert Eugene Thompson Jr. and his bride, the former Miss Christine Lee Soule.



Mrs. Robert E. Thompson Jr.

The couple was married in Ridglea Presbyterian Church, Fort Worth, Tex., by the Rev. Clifford Williams at 8 p.m. Saturday.

Parents of the couple are Mr. and Mrs. Kenneth Dana Soule, Fort Worth, and Mr. and Mrs. Robert Eugene Thompson, Fort Worth, formerly of Oklahoma City.

Miss Deborah Daniel and David Hawthorne Thompson were the honor attendants.

Others were Miss Cindi Mercer, Wyomissing, Pa.; Miss Laura Breuninger, Rockville, Md.; John Rountree, William Quinn, both of Oklahoma City; Duff Meriwether Williams, Asheville, N. C.; Miss Margaret Thompson, Miss Jacqueline Fralia, Miss Janet Baird, Miss Paula Perrone, Richard Hartwell Thompson, Kenneth Dana Soule Jr., Stephen Thayer Soule and Gary Scott.

SUNDAY OKLAHOMAN

August 30, 1970

Kindred no. 524313442



MRS. SOULE

... Julia Wall

## Soule-Wall

ASHEBORO — Asheboro Friends Meeting House was the setting for the Saturday wedding of Miss Julia Evelyn Wall and George Henry Soule III, April 10, 1971.

After a wedding trip to Charleston, S.C., the couple will live at his Charlotte residence, 2911 Westfield Road.

The bride, daughter of Mr. and Mrs. Earl O. Wall of Randleman, graduated from Randleman High School and attended Guilford College. She will graduate in June from Appalachian State University.

The bridegroom, son of Charlotte residents Mr. and Mrs. G. H. Soule Jr. of 1936 Vail Ave., graduated from Myers Park High School. He attends Central Piedmont Community College and is manager of The Cheese Shop.

Rev. Leslie Winslow heard their vows at 3:45 p.m.

The Observer,  
Charlotte, N. C.

## Basil M. Soule Notes Birthday

JAN 21 1971

WEST BRIDGEWATER — Basil M. Soule, formerly of 14 Merritt St., West Bridgewater, is observing his 82nd birthday anniversary today at the West Acres Nursing Home, 804 Pleasant St., Brockton. Mr. Soule was a resident of this town for more than half a century.

He served for many years as a trustee of the WB Public Library and was active in scouting. The Soule flower garden was noted throughout the area for its exceptional beauty.



# Miss Bigelow Is Wed Here



Photo by John Jurgens

## Mrs. Conrad R. Bolduc

Miss Martha Louise Bigelow, daughter of Mr. and Mrs. William E. Bigelow, Hiltz avenue, Lakeville, became the bride of Conrad Raymond Bolduc, son of Mr. and Mrs. Adrian J. Bolduc, Main street, Assonet on Saturday, Nov. 7.

The double ring ceremony took place at 10.30 a. m. at Central Congregational Church. Rev. Gerald O. Hindemith of Bridgewater conducted the wedding service and Rev. John Cronin of Fall River offered the closing prayer and benediction. Soloist for the wedding was Mrs. John Carver of Brockton. Mrs. Louis Hutchins of Raynham played the wedding music. Prior to the service Russell Bolduc, brother of the groom, played several selections. Baskets of pink carnations, white gladioli and pink and orchid daisy chrysanthemums adorned the altar.

The bride, who was given in marriage by her father, wore a bridal gown designed by herself, fashioned of white velvet with round collar trimmed with lace, and nylon chiffon sleeves with velvet cuffs. White eyelet interlaced with velvet was attached to the high waistline with bow and streamers extending to the floor in front. Her shoulder length veil was of nylon chiffon gathered to a crown of siren pearls and crystals. She carried a cascade bouquet of white carnations centered with pink rosebuds.

Miss Dorothy Simmons of Middleboro was maid of honor and bridesmaids were Miss Donna David, Lakeville, Mrs. Douglas Page of New Bedford and Miss Naomi Hindemith of Bridgewater. The bridal attendants' gowns were identical to the bride's with the exception of the sleeves which were of velvet. The maid of honor wore orchid velvet, the bridesmaids' contrasting shades of cranberry, dark green and purple. They carried baskets of pink carnations and pale orchid daisy chrysanthemums and wore similar flowers pinned to their hair.

Mrs. Bigelow wore a turquoise dress and coat ensemble with matching shoes; her hat and bag were silver. Mrs. Bolduc wore a royal blue coat and dress ensemble with matching hat and black accessories. Both mothers wore corsages of pink rosebuds and carnations.

Thomas Hadley of Assonet was best man; ushers included Douglas Page of New Bedford, and Leonard Bolduc and Robert Bolduc, brothers of the groom.

Following the wedding, a reception was held at V. F. W. Hall where 175 guests were present from Middleboro, Lakeville, Free-town, Assonet, Scituate, Fall River, New Bedford, Taunton, Braintree, Westboro, Roslindale, Wharton, N. J., Attleboro, Boston and Holliston. A buffet lunch was served by



—(Hoeryer)

## MRS. RICHARD DAVID SWEENEY Gayle Patricia Soule

On Jan. 23 in St. Mary's Church, Cortland, Miss Gayle Patricia Soule and Richard David Sweeney were united in marriage in a double ring ceremony. Parents of the couple are Mr. and Mrs. Kenneth H. Soule, and Mr. and Mrs. Frank Sweeney, all of Cortland.

Mrs. Robin Paolini of Buffalo was matron of honor. Other attendants, all of Cortland, were Mrs. Lynda Natale, sister of the bride, and Miss Bonnie Call, bridesmaids; Douglas Sweeney, brother of the bridegroom, best man; John Curtis and Angelo Bacarro, ushers.

A reception was held at the VFW Hall in Cortland.

The couple are graduates of Cortland High School and plan to live in Hyndsville. The bride is a candidate for graduation in June from State University College, Oneonta. She was a student teacher from September until Jan. 20 in the Burnt Hills School System.

The bridegroom served two years with the U.S. Army and is studying civil technology at the Hudson Valley Community College.

SCHENECTADY GAZETTE, JANUARY 28, 1971

Mrs. Kenneth Erickson's group of Lakeville. Arnold MacKenzie's orchestra provided music. The guest book was in charge of Misses Donna and Kimberly Soule, cousins of the bride.

Mr. and Mrs. Bolduc left for a short wedding trip after which they will fly to Glendale, Ariz., where they will reside temporarily while the bridegroom is serving in the U. S. Air Force. For travel the bride wore a navy blue knit suit with red, white and blue scarf at the neckline. She wore a navy blue felt hat with black patent shoes and bag. Her corsage was of red and white carnations.

The bride graduated from Aponequet High in 1970. She has been employed at Oak Hill Nursing Home as relief cook for over a year.

The bridegroom graduated from Bristol County Agricultural School and is presently serving with the U. S. Air Force at Luke Air Force Base in Arizona.



**SOWLE** — Jeffrey Alan Sowle is the second son of Mr. and Mrs. Harold Sowle, Coldwater route 2. He was born on Aug. 2 at 2:13 p.m. and weighed 7 lbs. 7 oz. *Coldwater Daily Reporter Sat. Aug. 8/1970*

Kindred Nos. 225162 & 225371 - see page 45 for previous notice.

Middleboro Gazette, Middleboro, Massachusetts, 12 Nov 1970

## Soule Youth News...



Bethany Smith

Soule Kindred is proud to announce that Bethany Smith, daughter of Clinton S. & Hazel (Sowle) Smith will be the YOUTH EDITOR of this section of the Soule Newsletter.

All SOULE KINDRED YOUTH are urged to write to cousin Bethany what they are doing, any awards that they may get, camps they attend, and any other news, no matter how slight. Such news may be sent direct to:

Miss. Bethany L. Smith  
79 Wilbur Avenue  
North Dartmouth, Mass. 02747

Cousin Bethany Smith is pictured left, displaying her new drum major uniform. Bethany also plays the flute in the school band. Her band, the Dartmouth High School Band, won a trophy as best musical marching unit in the South Shore Christmas Parade. Approximately 250,000 people viewed the 1970 parade and Dartmouth High was one of 28 marching units.

Bethany is a Junior at Dartmouth (Mass.) High School, and in addition to flute, plays the piccolo & guitar. She directed and played in "Oliver" at the school and hopes to study drama and music in college.

With their family spread from Texas to Florida to Massachusetts, Dr. & Mrs. Francis Gordon Soule, Jr. really appreciate a group picture. Pictured right, from left to right are: Richard M. ("Dick"), Dr. Francis ("Frank"), Patty, John, Bettie, & Robert ("Bob") Soule of Andover, Mass. (See page 18 of Vol. V, No. 1 Newsletter for son John's wedding.) Soule Kindred no. 33311311.



Cousin Richard Mansfield Soule (pictured above rt. with his family) is now stationed at the Naval Communications Center in Pensacola, Florida. He is now a 3<sup>rd</sup> Class Petty Officer.

Cousin William Curtis Soule of Wake Forest, N. C., is studying Psychology at Campbell College, Buies Creek, N. C. "Curt" plays golf & enjoys the college greens very much, (Kindred no. 33311311.)



## SOULE REUNION

§ As of this date, no firm 1971 reunion plans have been made. As soon as several decisions are made, we will notify all kindred. We WANT your ideas as to place, date, schedule, and what help you may be able to offer. we invite every cousin to send in a post-card or letter with his or her ideas.



## Young Lewiston Soldier Is Killed in Vietnam Fighting

PFC Charles H. Soule, 19, of 35½ Bradley St., Lewiston, died Monday from wounds suffered in combat in Vietnam.

He was born April 3, 1951, the son of Everett and Ellen Larabee Soule. He attended local schools and was a member of the Lewiston United Baptist Church.

PFC Soule entered the U.S. Army in June 1968 and spent 18 months in Germany. He re-enlisted in June 1970 and has been in Vietnam since September 1970.

Surviving are his parents, Mr. and Mrs. Everett E. Soule; four sisters, Mrs. Richard (Norma) Libby, Miss Lee Mary Soule, Mrs. Ronald (Linda) Nadeau and Mrs. George (Bertha) Lacasse, all of Lewiston; two brothers, Ernest Soule, Everett, Mass., and Everett C. Ray, Greene.



PFC. CHARLES H. SOULE

### MILITARY FUNERAL SERVICES ARE HELD FOR CHARLES SOULE

Military funeral services for Sp.4 Charles H. Soule, 19, killed in action in Vietnam were held Tuesday morning at the Conley Funeral home with the Rev. John Schroeder officiating. He was the son of Mr. and Mrs. Everett Soule of 35½ Bradley St., Lewiston.

SPC. 4 Soule died Feb. 8, the result of wounds suffered in combat.

Rev. Schroeder and Chaplain Armand Dugal of American Legion Post 22 recited committal prayers at the entombment at Riverside Cemetery.

The bearers were members of the 278 General Supply Co., Camp Devens, Mass.

The color guard included personnel of American Legion Post 22, Lewiston, Lucien Gilbert, Edgar Morin, Cyprien Pelletier, George Pontbriand, Alfred Bisson.

The Army honor guard was from the 278 General Supply Co., Camp Devens, Mass., and the military escort attended from Dover Air Force Base, Dover, Del.

Roland Saucier of Lewiston High School served as drummer.

Those attending from out of the city included Mr. and Mrs. Ernest Soule, Catherine Soule, Marie Ann, Lillian and Douglas Soule of Everett, Mass.; Mr. and Mrs. Everett Ray, Linda and Susan Lapointe, Greene; Charlotte Doughty and Charlotte Soule, Portland; Lee Mary Soule of Saco.

Lewiston (Maine) Daily Sun  
Wednesday, February 17, 1971

Lewiston (Maine) Daily Sun  
Thursday, February 11, 1971

The editor, in behalf of Soule Kindred extends sympathy to cousin Everett and his wife upon the loss of their son.

### Soule

Mrs. Marguerite Davis Soule, 63, of 535 Marietta Ave., Swarthmore, died Monday at her home. Mrs. Soule was born in Connellsville and lived 18 years in Swarthmore, Penna.

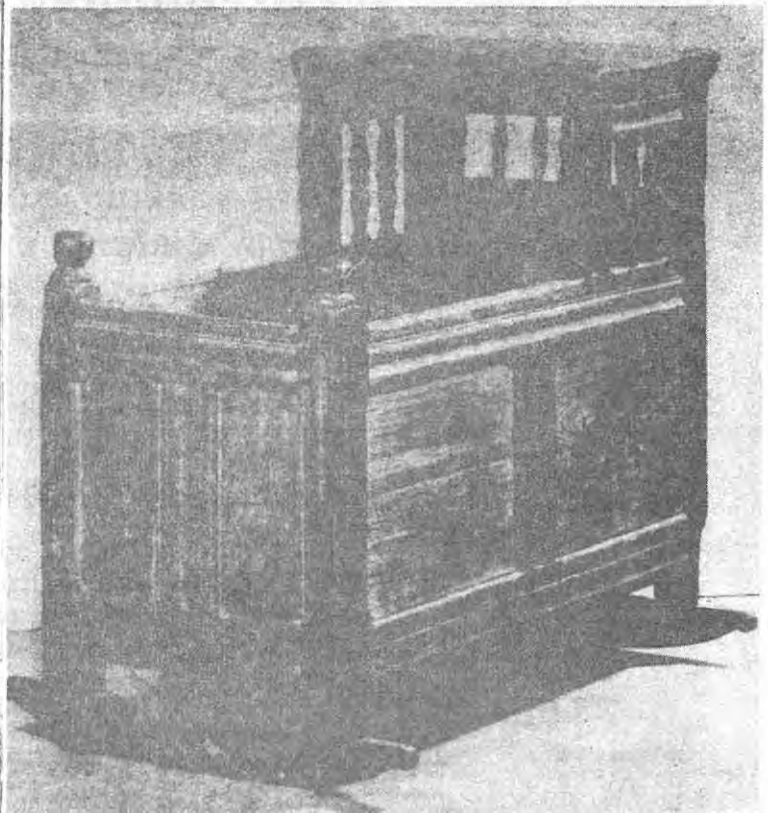
A former high school teacher of English, French and Spanish, she recently tutored students in the Swarthmore High School French department.

She was active in the Swarthmore Women's Club and the Swarthmore Public Library, and was a member of Swarthmore United Methodist Church and Kappa Kappa Gamma Sorority.

She is survived by her husband, John W. Soule, and a son, Charles Davis Soule, at home.

Services and burial will be at the convenience of the family.

The Soule Kindred extend their sympathy to cousin John & his son over their loss.



Fuller Cradle Probably Made in Plymouth, Mass.,  
About 1620 to 1650

### KNOW YOUR ANTIQUES

## Cradle Argument Is Still Unsettled

By RALPH AND TERRY KOVEL

People often claim to have ancestors that came over on the Mayflower. It is strange that a cradle should also be the center of the same sort of argument. For many years, a noted authority has claimed that the Fuller cradle was brought by Samuel Fuller when he landed at Plymouth, Mass., on the Mayflower. It still seems hard to fathom why he brought a cradle. He was not married.

There were two Fullers, one stayed in England and one came to America on the Mayflower. The cradle with the elaborate history is made from American oak, so it is only logical that it was made in Plymouth and was not brought from England. It is said to have come from the family of Dr. Samuel Fuller by records of his descendants.

Mrs. Anthony Behm (Marcia Soule) and infant daughter, Carrie Jane, of San Francisco have been house guests of her parents, Mr. and Mrs. Lawrence Soule of East Bridgewater. Carrie is the great-granddaughter of Mrs. Herbert Williams, Sr., of Brockton and Basil M. Soule, who is currently at West Acres Nursing Home. Mrs. Behm has rejoined her husband in San Francisco and they are now en route to make their home in Manila, where he has been transferred by the Bechtel Corp.

JAN 21 1971

\* \* \*



## SOULE KINDRED

BETTY-JEAN HANER-TREASURER

1491 MC CLELLAN STREET

SCHENECTADY, NEW YORK 12309

## NEW MEMBERS - SEPTEMBER 1970-APRIL 1971

Mr. James Abbott - P.O. Box 332 - Johnstown, Ohio, 43031  
Mrs. J.L.A. Atkinson - 383 Somerset St. - North Plainfield, N.J. 07060  
Mr. C.A. Awalt - 3205 Tanglewood - Fort Worth, Texas  
Mrs. R.L. Bieseke - 5 Willowbrook - Storrs, Connecticut, 06268  
Mrs. Robert W. Briggs, Sr. - 20 Oleander St. - West Springfield, Mass. 01089  
Mr. Stephen C. Brightman - Box 424 - Steilacoom, Washington, 98388  
Mrs. Leon Camp - 396 Queens Way, Apt. 902 - London, Ontario - Canada, Zone 14  
Mr. Raymond O. Campbell - 616 Walberta Road - Syracuse, New York  
Mrs. James Cope - R.R. 1 - Hudson, Illinois - 61748  
Mrs. Maurice E. Corthell - 515 N.E. Flint St. - Grants Pass, Oregon, 97526  
Mrs. Delma P. Cox - P.O. Box 627 - San Marcos, Texas, 78666  
Mrs. Billie Soules Day - 1116 Fern Street - McAllen, Texas, 78501  
Mrs. Delbert Decker - Route 2, Box 2050 - Odessa, Texas, 79760  
Mrs. Weldon Edwards - Clyde, Texas, 79510  
Mrs. Gerald Eidam - 701 High Street - Santa Cruz, California, 95060  
Mr. John Stuart Fitts - 166 Maine Street - Fryeburg, Maine, 04037  
Mrs. Robert Ford - "Tanglewood" - Danbury, New Hampshire, 03230  
Mrs. Bill G. Frame - 3716 Georgetown, West University Pl. - Houston, Texas, 77005  
Miss Isabelle V. Freeman - 155 Depot Street - Duxbury, Massachusetts, 02332  
Mrs. Christine E. Frigstad - 476 Prospect Road - Springfield, Pennsylvania, 19064  
Mrs. Ruth Geeslin - Goldthwaite, Texas, 76844  
Mrs. R.M. Gillig - 3966 Newton Street - Torrance, California, 90505  
Mrs. Charlene Griffith - 411 Dell Street - San Marcos, Texas, 78666  
Mrs. Marion Soule Griffith - 82 Cedar Street, Middleboro, Massachusetts, 02346  
Miss Catharine Soule Hall - 63 Allen St. Box 486 - Marion, Massachusetts, 02738  
Mr. William G. Haney - 426 N. Citrus Ave. - Los Angeles, California, 90036  
Mrs. Grady Henry - 4005 Amherst - Odessa, Texas, 79760  
Mrs. John Hennessy - Abington Court Apts. - Abington, Pennsylvania, 19001  
Mrs. Jane Carpenter Hogan - 1328 State St. - New Orleans, Louisiana, 70118  
Miss Dorothy H. Irvine - 25 Willow St. - Salinas, California, 93901  
Mrs. A. R. Kornegay - 1505 E. Cardwell - Brownfield, Texas, 79316  
Mrs. Kathryn Soule Lester-Kenney - 2 N. State St. Apt. 6 - Concord, N.H. 03301  
Mr. & Mrs. Ralph Mabie - R.R. 5 - Coldwater, Michigan, 49036  
Mrs. Leroy V. Marcotte - 33 Metcalf Dr. R.D. 3 - Cumberland, R. I. 02864  
Mrs. Homer S. McCasland - Route 1 - Indian Gap, Texas, 79635  
Mrs. Annie Soules McCaughan - Santa Anna, Texas, 76878  
Mrs. Arthur McKinnon - 14 St. Lawrence Street - Braintree, Massachusetts, 02185  
Mrs. Lee D. Milsap - 1301 Marble Drive - Waco, Texas, 76705  
Mr. Ross A. Nielson - 335 Seyburn Dr. - Baton Rouge, Louisiana, 70803  
Mrs. Howard R. Patterson, Jr. - Route 12, Box 874 - Fort Worth, Texas, 76110  
Mrs. Earl Shannon - Burdett, New York, 14818  
Mrs. Winifred Sheldon - Route 1 - Goldthwaite, Texas, 76844  
Miss Cordelia Soles - 450 Carson Street - Monongahela, Pennsylvania, 15063  
Mr. James H. Soles - 1884 Mason Mill Rd. - Decatur, Georgia, 30033  
Mr. Clifford Soule - 38 Madison Avenue - Demerest, New Jersey, 07627  
Mr. Dennis W. Soule - 725 Gwyn Drive - Mankato, Minnesota, 56001  
Mr. Dorance A. Soule - 2906 N. Willamette Blvd. - Portland, Oregon, 97217

## NEW MEMBERS - Continued

Mr. & Mrs. Lewis F. Soule - 127 Main Street - Salem, New Hampshire, 03079  
 Mrs. Lylyan Soule - 42 Hillcrest Rd. - St. Helena, California, 94574  
 Mr. Millard L. Soule - Route 1 - Box 67 - Kent, Connecticut, 06757  
 Mr. Randy Soule - Mystic - Box 1223 - Bedford, Quebec, Canada  
 Mr. Robert Soule - Santiago, Minnesota, 55377  
 Dr. Robert C. Soule - 170 Roslyn Drive - New Britain, Connecticut, 06052  
 Mr. Robert N. Soule - 2330 Vale Crest Rd. - Minneapolis, Minnesota, 55422  
 Mr. Wallace D. Soule - 1017 W. Hickory Street - Lompac, California, 93436  
 Mr. Avery Soules - P.O. Box 266 - Burleson, Texas, 76028  
 Mr. E.V. Soules - Box 451 - Roscoe, Texas, 79545  
 Mrs. Henry Soules - Route 1 - Evant, Texas, 76525  
 Mr. J.H. Soules - 318 Childress Street - San Angelo, Texas, 76901  
 Mr. James H. Soules - P.O. Box 429 - Hamilton, Texas, 76531  
 Mr. Joe Carleton Soules - 513 Waxwing Circle - San Antonio, Texas, 78239  
 Mrs. John Soules - Box 395 - Star, Texas, 76880  
 Mr. John W. Soules - P.O. Box 301 - Sundown, Texas, 79372  
 Mr. Johnny E. Soules - 100036 Goodyear - Dallas, Texas, 75229  
 Mr. Luther H. Soules, Jr. P.O. Box 6907 - San Antonio, Texas, 78209  
 Mr. M.E. Soules - 5907 Bent Bough Lane - Houston, Texas, 77018  
 Mr. Theodore Soules - Roscoe, Texas, 79545  
 Mr. Ward G. Soules - 1735 West Odell - Casper, Wyoming, 82601  
 Miss Carol A. Sowle - 942 Ridgewood Drive - Apt. 3 - Fort Wayne, Indiana, 46805  
 Dr. Claude R. Sowle - 29 Park Place - Athens, Ohio, 45701  
 Mr. David D. Sowle - 325 S. Phillip Street - Auburn, Indiana, 46706  
 Mrs. B.C. Sproull - 8943 Calle Pasto - Tucson, Arizona, 85715  
 Mrs. George Sutherland - Box 184 - Shushan, New York, 12873  
 Mrs. Patricia S. Villegas - Salvatierra 75 - Mexico City, D.F. 20, Mexico  
 Mrs. Emil B. Vos - 28059 Kendalwood Drive - Farmington, Michigan, 48024  
 Mrs. Garth Wall - P.O. Box 132 - Evant, Texas, 76525  
 Mrs. William Whirlow - Blair Street - Jeannette, Pennsylvania, 15644

## SUSTAINING MEMBERS of SOULE KINDRED

1971

We wish to thank the below cousins for their extra financial help without which we could not publish as we do the Soule Newsletter.

Mrs. Harriet W. Ball  
 Mrs. James Cope  
 Mrs. Maurice E. Corthell  
 Rev. Gilbert H. Doane  
 Mr. Arthur M. Drinkwater  
 Mrs. Frederic K. Gammons  
 Miss. Betty-Jean Haner  
 Mr. William G. Haney  
 Mrs. A. M. Johnston  
 Mr. Arthur G. Lyon  
 Mrs. Philip Nisbet McCombs  
 Col. Frederic T. Parker  
 Mrs. Donald G. Paton  
 Mrs. Edward J. Schmuck  
 Mrs. Iva W. Shippee  
 Miss Shirley Soule Smith  
 Miss Cordelia Soles  
 Dr. A. Bradley Soule  
 Mrs. B. Linn Soule  
 Sgt. Ben George Soule  
 Mr. Carl W. Soule, Jr.

Mr. Edgar C. Soule, Esq.  
 Mr. Edwin C. Soule  
 Dr. & Mrs. Francis G. Soule, Jr.  
 Mr. Frank H. Soule  
 Mr. Henchman S. Soule  
 Mr. Horace H. Soule  
 Col. John E. Soule  
 Mr. Kenneth L. Soule  
 Mr. Merton C. Soule  
 Mr. Oscar F. Soule  
 Mr. Philip K. Soule  
 Mr. Robert William Soule  
 Mr. William N. Soule, Sr.  
 Mr. Joe Carleton Soules  
 Mr. Luther H. Soules, Jr.  
 Mr. & Mrs. Luther H. Soules, III  
 Rev. Paul A. Soules, Sr.  
 Mr. William Fred Soules  
 Mrs. Robert L. Tindall  
 Mr. Charles M. Wyman