



Soule Kindred Newsletter

Library of Congress: C371, Vol. L, No. 3

Fall 2016

*Preserving Soule Heritage
for Future Generations*

In This Issue:

Soule Kindred Remembers: Veteran Lendall Barton Knight

**p. 7**

The Search for Soules By Adelia Rosasco Soule

**Revisiting an article from
1967, the first year of Soule
Kindred in America**

p. 4

Save the Date! Soule Kindred 50th Anniversary Celebration Details on p. 11



Sara Soule-Chapman
and Donna
Barbeau on
Soule Ave. in
Duxbury, MA

The Early Days — SKA Then...

Our very first editor of "Soule Newsletter", George Standish Soule, included a section called "Letters From the Kindred" (below). We can assume George and co-founder Col. John Soule were very pleased with the positive feedback they received from Soule family members after starting up SKA.

Reprinted from Vol. I, No. 2, April 1967, Page 17

"We have received many, many letters of congratulations and I wish to thank these people for their encouragement. Soule kindred have written in from all corners of the USA (yes, even Alaska and Hawaii), Canada and even South America where one good SOULE is with project HOPE. We seem to have Soules in all branches of the Services and of every rank from private to Major General. (Indeed, I believe that we could form our own small army!) Soules also seem to be engaged in every business and profession. There are enough Attorneys for a law firm, enough Engineers for a Construction Company (and indeed there is a Soule Construction Company in Florida). There are enough Doctors for a small clinic, and I do not want to leave out the original profession of those early Soules, farming, for I believe that the Soules still produce enough food to feed more than our number. It seems almost impossible that 340 years ago, George and Mary could have started a group so large!"

... and Now — 2016 Highlights

The SKA Board reports that Soule Kindred has made great progress toward its goals in the past year. Examples include:

- Our search for the origins of George Soule and Mary Beckett continues through two major efforts: hiring researchers to examine historical records, and collecting DNA information from direct descendants of George Soule, both in the US and the UK.
- We are preparing for our SKA 50th Anniversary Reunion (September 8-10), which will be held in conjunction with the GSMD Congress (September 8-13) in Plymouth MA.
- Our Website has been updated and improved and is almost 100% complete.
- We supported a young person beginning college through a scholarship award.
- We continue to gather and share important member information through our directory and Family Tree project.
- We provide a forum for Soule descendants, both members and non-members, to communicate through our Facebook page, Facebook group and Twitter contacts.

Contents Fall 2016

Editor's Comments:

I hope this time of year finds you spending time with family, reflecting over the past year, and looking forward to good things ahead, such as the Soule Kindred 50th Anniversary Reunion, just around the corner September 8-10, in Plymouth, MA ([page 11](#)).

Over Thanksgiving weekend, I reflected over the first holidays when my children were young, and how the kids have grown since then. We laughed about old times and shared recent happenings, as we baked their Great-Great Grandmother Hattie Baker Kingman's recipe for custard pie (featured in last year's (Fall 2015) newsletter.

Soule Kindred has much to celebrate when looking over the last year (see *2016 Highlights*, [cover](#)) or reflecting over the last 50. Find an entertaining account of genealogy adventures written 50 years ago by Adelia Rosasco Soule — in *The Search for Soules* ([pages 4](#)). See what you can remember from 1967 in *Do you know?* ([page 6](#)). And learn about *Exceptional Soule Women* in history ([page 9](#)).

You can always share your own reflections, memories, research findings, or news, by submitting stories to me, your editor, at kathleenkingman@yahoo.com.

Kathleen Kingman

Featured Articles:

On the Cover:
[The Search for Soules](#) [p.4](#)
by Adelia Rosasco Soule

Enjoy a lively article published in our first volume of the SKA newsletter in 1967! Compare your experiences with genealogy then and now.

[Soule Kindred Remembers Veteran Lendall Barton Knight](#) [p.7](#)

[Soule Kindred 50th Anniversary Reunion](#) [p.11](#)

Details to help Soules get excited for what's sure to be an extraordinary event!

On the Back Cover:



**Save the Date for
our 2017 Reunion!**

Also in this issue:

Presidents' Letter [3](#)

Exceptional Soule Women [9](#)

GSMD European Tour Information and Registration Form [10](#)

Soule Kindred in America, Inc.

1348 E. Vinedo Ln.
Tempe, AZ 85284-1667
Website: soulekindred.org
E-mail: kathleenkingman@yahoo.com

Soule Kindred Newsletter is a triannual publication and serves as the voice of Soule Kindred in America, Inc.

Soule Kindred Newsletter is not responsible for individual opinions or viewpoints printed in this publication.

Questions regarding the newsletter should be addressed to the editor.

Original materials from this newsletter may not be reprinted without the permission of Soule Kindred in America, Inc.

Soule Kindred Newsletter Summer 2016 Edition

Edited by
Kathleen Kingman

Proofreader
Karen McNally

Contact
kathleenkingman@yahoo.com

Printer
eDigital Graphics
Green Brook, NJ 00812
info@edigitalgraphics.com



A Friendly Reminder

It's that time of year — time to renew your SKA Membership, due by January 1, 2017. For your convenience, you now have the choice of renewing online at soulekindred.org. Start your year off right by staying connected to your Soule family!

Presidents' Corner

Dear Soule Kindred,

It's been a busy fall. As you know, we've held our annual Board election and we are happy to welcome two new members: Christine Conley-Sowels and Leslie D. Soule, and one returning member, Jeanette Taylor. Many of you recognize Jeanette's name, as she has served one term already and is currently our Membership Committee Chair. Jeanette has been a member of Soule Kindred in America since 1980 and active for a long time. Christine is a relatively new member of Soule Kindred, but a genealogist for over 40 years. She is a retired educator with keen interest in our scholarship and membership programs. Leslie Soule lives in Sacramento, California, with her dog, Ginger. She's a writer and artist with interests in martial arts, genealogy and history. Leslie brings skills in several areas including computer expertise/web development, fundraising, legal information and volunteer coordination. All three are great additions to our board!

2017 will be an exciting year for Soule Kindred, as we are convening our biennial reunion, in Plymouth! Mark your calendars for September 8-10, 2017, and look for detailed information on events and logistics coming soon. Our reunion committee, headed up by Sara Soule-Chapman, is planning a wonderful event and we want to see you there!

Lastly but importantly, we ask that you consider Soule Kindred in your annual giving. We recently sent an email about two important programs, research and scholarship: efforts that need your help! Our quest to discover George Soule's roots now takes us to England and beyond. SKA must and should do this work, so please help. With college costs increasing, we also need to increase our scholarship award. Join us as we embark on these and other important new endeavors in the New Year!

Thanks for all you do,

Helen Soule

Helen Soule
SKA Co-President
helenasoule@gmail.

Darrel Young

Darrel Young
SKA Co-President
barb7801@hctc.net



**Find SKA 50th
Anniversary Reunion
Information on page 11!**



Sara Soule-Chapman and Robert Chapman at Plimoth Plantation, Plymouth, MA

The Search for Soules

By Adelia Rosasco Soule

Reprinted from Soule Kindred Newsletter Vol. 1, No. 2, April 1967, Pages 9-10



Adelia Risasco Soule
Photo courtesy of Mills
Times Vol. 11, Nov 2012

As the 50th Anniversary year, 2017, is rapidly approaching, we would like to begin the celebration by reprinting an article from the very first volume of "Soule Newsletter", as it was called at the time. As you read and reflect on a different era, consider where you were, or where your family members were, and what was going on in your/their lives. Consider similarities and differences in the ways you conduct genealogical research today, with the ways things were done in 1967.

The warning bell sounded: five minutes to closing time. Where was John? Would he come for me? Should I try to find the exit alone? The lights blinked: two minutes to go. Patience straining, I waited. Then darkness. Genealogy be hanged... I wanted OUT!

My memory guided me through two basement rooms to the stairs. The lights in the main part of the courthouse were still on. As I headed for the front door, John appeared breathless. "The old documents were so interesting that I stayed to the dark last."

My husband started this genealogical research 30 years ago, when our son received a baby book with pages for ancestral notes, names and dates. An engineer, John never left a subject half done: he plumbed it in depth; his training taught him that. With the name of SOULE he had research within his grasp: in libraries, courthouses, census records, pension files, the National Archives and New England... from Freeport, Maine via Vermont, New Hampshire, Massachusetts, Connecticut, Rhode Island to Dutchess County in New York (where I just missed being locked in the basement for the night!).

We've been at it these 30 years together. I could have chosen to be a "genealogical widow" and stayed home and done my own writing. That way I would have foregone the travel, the New England lobsters and the bits, here and there, that have added spice, hilarity and human interest to some of my own material. Besides, we have made some wonderful friends and garnered a heap of kin. The name SOULE (however you spell it according to the many variants) is open sesame in New England as PILGRIM FATHERS is in England and Holland.

So, questioning we have been on the trail of this 35th signer of the Mayflower Compact and his many descendants. This search is at long last bearing fruit because after 30 years one ought to publish something! Granted, the fact that John had gotten endless "sweet old ladies" in the D.A.R.; helped Americans from Iowa to Abingdon, VA, establish lines to "old George", and never taken a cent for research, time, travel, photographs, copies and so on; never-the-less, one has to accept the idea that research is NEVER DONE. A writer, historian or genealogist must start writing... and later, adds on or corrects.

Where do I fit in this pursuit of SOULES? In many ways and more places. I've read tombstones in England, Ohio and Michigan. In the latter, I rubbed inscriptions to take back to our records when John was elsewhere. I've edited copy; deciphered old handwriting; helped interview gentle ladies (and entertained them in our home), curmudgeons and courthouse clerks. Rhode Island has the distinction of having a civil servant, callused and tobacco chewing, with the most gifted and extended sense of profanity encountered in our travel of two hemispheres.

Continued on [next page](#)

The Search for Soules Continued

For me, personally, the most rewarding experience along the lines of John's forebearers occurred in Leyden, Holland, in Old St. Peter's Kirk. My native curiosity led me to a pile of stacked wooden boxes... all were alike with holes in the top. Investigation showed the stack not to be boxes since one side was open. A few of these three-sided squares contained small earthen pots.

"What in Tunket are these?" I asked our tracer of ancestors. "Never saw such a thing before. You're glib of tongue; go ask the man in that office. He looks like a verger of some such." No verger, but the pastor, from whom I learned that the mound of open ended squares was a pile of charcoal foot-warmers.

"Since we are trying to install modern heating equipment, I am asking all parishioners to buy back one of the old warmers in use before the time of the Pilgrims, when they spent a year with the Dutch and worshipped with us, before sailing from Delft Haven for England and eventually to New England in the Mayflower."

The word Pilgrims brought John. "Have you a roster of the old church records, Sir?"

"Unfortunately, no. But, these warmers are authentic: of that I am sure."

More interested in antiques than in ancestors, I spoke up: "Could we buy an old warmer? My husband is a descendant of one of the original Mayflower passengers. Has he the right to ownership?"

"I should think so. Let's find a good one... with the earthen brazier still intact. The charcoal used to be divided into fourths. If the sermon lasted more than the hour, feet got cold, moved, made noise and told the preacher that he had outrun his time."

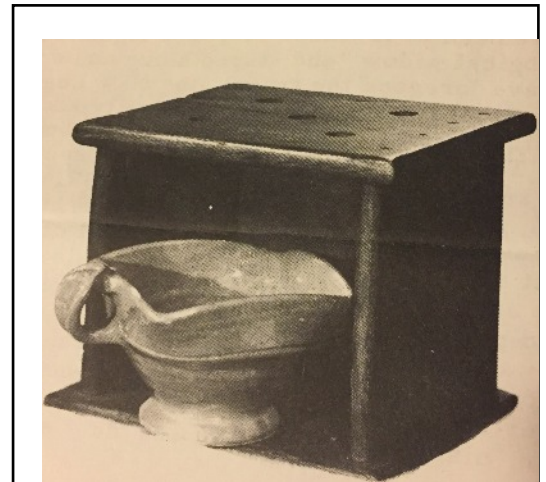
With this briefing from the dominie, the transfer of three American dollars and John's name on the register, the warmer was ours. Well over the 100-year mark for the importation of antiques, I had only to figure out how to make room for the new acquisition in our stream-lined air luggage. The gift of a pair of shoes and a bulky sweater to our hotel maid solved the problem.

Learning about the dedication of the SOULE house in Plymouth on September 12, 1966, by Horace Homer Soule, made me suggest to my genealogist mate that we should donate the warmer to the replica of the ancient home. The answer was a firm NO. The best I can do, therefore, is to make available a picture of this venerable piece of pre-Americana via this newsletter and to offer to show it to any SOULE who happens to be in the nation's capital on a visit. An extra cordial welcome will be extended to the subscribers of the quarterly, Soule Kindred.

Editor's Note:

In 1986, Adelia Rosasco Soule was named the first Poet Laureate of Northwest Florida, honored by the West Florida Literary Federation. Soule wrote four books. In her 1987 book, Panhandle Memories: A Lived History, she describes her life as an immigrant in the early 1900s in the Florida Panhandle. Adelia passed away on May 31, 1996.

Her husband, Colonel John Soule, was a founding member of Soule Kindred in America. On page 2 of the Soule Newsletter, Vol. 1 No. 2 of April 1967, Col. John Edward Soule is credited as "Historian & Genealogist". Co-founder of SKA, George Standish Soule, was Editor, and the Printer was James D. Soule.



The old foot warmer with the terra-cotta brazier pulled slightly to the front to show the four corners. The oaken top of the stool literally "worn by the steps of time." Notice pegged construction.

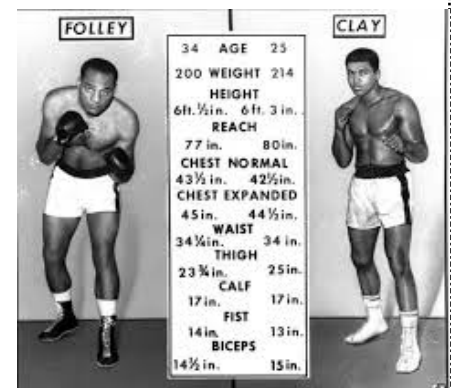
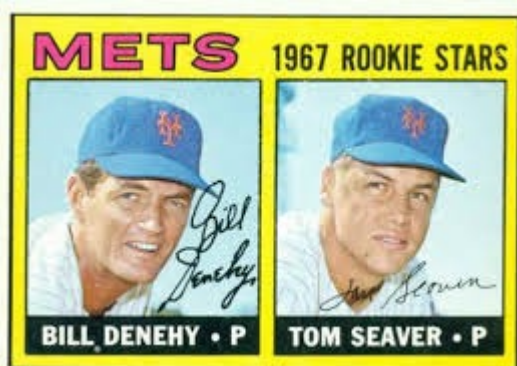
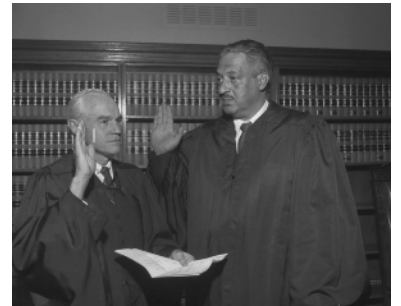
Soule Kindred in America 1967-2017

Do you know...What was Happening 50 Years Ago?

Can you remember what was happening in the world in 1967?

Here are some examples:

- US Forces in the Vietnam War numbered 485,600 with 11,153 killed in action.
- The Human Be-In takes place in Golden Gate Park, San Francisco, on January 14, setting the stage for the "Summer of Love."
- Apollo 1: US astronauts Gus Grissom, Edward Higgins White and Roger Chaffee are killed when fire breaks out in their Apollo spacecraft during a launch pad test.
- The United States Soviet Union and United Kingdom sign the Outer Space Treaty.
- The classic, *Pirates of the Caribbean*, attraction opens at Disneyland, California.
- The US aerospace manufacturer McDonnell Douglas is formed through a merger of McDonnell Aircraft and Douglas Aircraft. (It becomes part of the Boeing Company three decades later).
- Elvis Presley and Priscilla Beaulieu are married in Las Vegas.
- The Beatles released one of the most influential record albums of all time, *Sgt. Pepper's Lonely Heart's Club Band*, on June 1. It remained number one on the albums charts throughout the summer of 1967.
- Loving v. Virginia: The United States Supreme Court declared all US state laws prohibiting interracial marriage to be unconstitutional
- Solicitor General Thurgood Marshall is nominated as the first African American justice of the United States Supreme Court.
- Canada celebrated its first 100 years of Confederation.
- On August 29 the final episode of *The Fugitive* airs on ABC. The broadcast attracted 78 million viewers, one of the largest television audiences for a single episode.
- The musical, *Hair*, opens off-Broadway. It moves to Broadway the following April.
- Walt Disney's 19th full-length animated feature, *The Jungle Book*, is released. It was the last animated film personally supervised by Disney
- October 21 tens of thousands of Vietnam War protestors march in Washington, D.C.



Soule Kindred Remembers: Veteran Lendall Barton Knight



Lendall Barton Knight, 96, [George, John, Moses, Jedediah, James, Charles, Dorcas Annie (Soule) Knight, Everett Samuel] died peacefully on Easter morning, March 27, 2016. Lendall had been a member of SKA since 1997. He was born in Boston, Massachusetts, on April 2, 1919, the son of Everett S. and Jessie R. (Robbins) Knight. Len and his younger brother, Lloyd R. Knight, grew up in the oldest framed house in Limerick, Maine, which has remained in the Knight family since 1836.

Valedictorian of his Limerick High School class, Len graduated from Bowdoin College in 1941, where he earned his B.S. Degree in economics. He was a member of the Alpha Tau Omega fraternity, and served as Bowdoin Alumni fund chairman and director.

Following his graduation from Bowdoin, Len received his commission in the United States Navy at Northwestern University, Chicago. Len attended intelligence school in Boston, and was initially on active duty in Washington, D.C. Upon the outbreak of World War II, Len requested to be reassigned and to serve on a Maine-made ship. He was assigned to the destroyer *U.S.S. O'Bannon DD-450*, which was built at Bath Iron Works.

The *O'Bannon* was the most decorated destroyer of the war, earning 17 battle stars and the distinction of being present in Tokyo Harbor to accept the Japanese surrender. Len served as a lieutenant on the *O'Bannon*, and helped fight the naval battle of Guadalcanal inside one of the *O'Bannon's* gun mounts. The *O'Bannon* led the way, attacking at point-blank range, and was a major factor in sinking the Japanese flagship, the *Hieri*, which was 12 times the size of the *O'Bannon*. Len attended *O'Bannon* reunions, traveling throughout the country until very recent years.

He also served as lieutenant commander on the destroyers *U.S.S. Hall DD-583* and *U.S.S. Haggard DD-555*. Len also fought at the battle of Leyte Gulf, Philippines, and at Iwo Jima and Okinawa. While serving on the *Haggard*, Len experienced a kamikaze attack that regrettably took the lives of a dozen of his shipmates at the Battle of Okinawa. Among Len's significant WWII awards are the Navy Presidential Unit Citation, the American Defense Service Medal, the European-Africa Middle Eastern Campaign Medal, the Asiatic-Pacific Campaign Medal with 10 Bronze Stars, the Philippine Liberation Medal with one Bronze Star, and the WWII Victory Ribbon. Upon discharge from the U.S. Navy, Len held the rank of lieutenant commander.

Len and his family are thankful he could attend the dedication of the WWII Memorial in Washington, D.C., in May 2004. He was escorted and accompanied by his good friend, George Philip III, Lt. Col. USMC (ret.), whose father, Lt. George Philip Jr., served with Len aboard the *O'Bannon*. George Philip Jr. later died in battle as commanding officer of *U.S.S. Twiggs*. Len was also presented an Eagle Head cane by Lt. Col. Peter Ogden of Maine Veteran's Affairs in recognition of Len's WWII service.

Continued on [next page](#)

Remembering Veteran Lendall Barton Knight continued...

Len attended University of Connecticut School of Law, and was admitted to the Maine Bar in 1953. He was involved in banking for more than 20 years, serving as a vice president and trust officer at several Maine banks, including Merrill Trust in Bangor, and Casco and Canal banks in Portland. He was initially associated with Connecticut Bank & Trust Co. in Hartford.

In 1975, Len joined a three-generation family law firm, Titcomb, Fenderson & Titcomb (formerly Titcomb and Siddall), which was founded by former York County prosecutor and municipal judge Edward S. Titcomb. Len fully retired from Titcomb, Marass, Flaherty & Knight when he and his wife, Mary, relocated to Falmouth in 2007.

In 1950, Len married Mary Titcomb, daughter of Edward S. Titcomb and Margaret Hewey Titcomb. Edward's ancestors owned the Titcomb Shipyard in Kennebunk, and Margaret's father was a former U.S. federal court magistrate. Len and Mary met at the old York County Jail in Alfred while Len's father, Everett, was serving as sheriff of York County from 1939-54, and while Mary's father, Edward, was municipal judge. Len's mother, Jessie, was York County clerk of courts for several years.

Len and Mary were married for 57 years, and celebrated their 50th wedding anniversary at the home of Daniel and Beda Knight in North Yarmouth with 100 guests in attendance, including all of Mary's bridesmaids.

Len, Mary and their three sons, Bart, Dan and Len, moved from Hampden Highlands to Cape Elizabeth in the early 1960s, where they resided until 1980. Len was an avid gardener. He was passionate about beautifying his yard on Oakhurst Road, especially growing roses. Len often came home with a first-place ribbon from the Maine Rose Society. Len was also active in managing his woodlots in Limerick and Parsonsfield, consulting with foresters and selectively cutting in a responsible and environmentally friendly way. He was also past president of the Corporate Fiduciaries Association of Maine, and a member of the American Legion and Rotary Club. Len was a Maine medical corporator and mentor of the Mayflower Society.

Len and Mary moved to Springvale in 1980, where they resided until 2007. They were active members of North Parish Church in Sanford, now known as United Church of Christ, where they were married. Len and Mary were also members of First Congregational Church in South Portland. Len lived independently at Applegate, Falmouth, until June 2014, when he elected to move to Ledgeview Assisted Living in Cumberland Foreside.

Len was preceded in death by his wife, Mary, in August 2008, while residing in Cape Elizabeth. He is survived by: his brother, Lloyd R. Knight and his wife Ellen L. Knight of Cape Elizabeth; son Barton T. Knight and his wife Stephanie Bubar Knight of Cumberland; son Daniel S. Knight and his wife Beda Fanning Knight of North Yarmouth; son Lendall S. Knight, captain, USN (ret.) of Washington D.C.; grandchildren Margaret, Samuel, William, Lana, Fredrick, Andrew and Lucianna; and great-grandsons Ivan and Treston.

Exceptional Soule Women

By Kathleen Kingman

Soule women have a history of being recognized by both their professional peers and their Soule kindred. Back when things could be quite difficult for women pursuing higher education and professional careers, these Soules muscled their way into positions often dominated by men and were successful in their fields.

In the second-ever issue of Soule Kindred Newsletter, Mrs. J. Ardin Fox wrote in to make sure readers please: “Note: Kindred are Kindred and no Soule would deny heritage just because a Soule girl decided to change her name.” (*Soule Newsletter*, Vol. 1, No. 2, April 1967, p. 17)

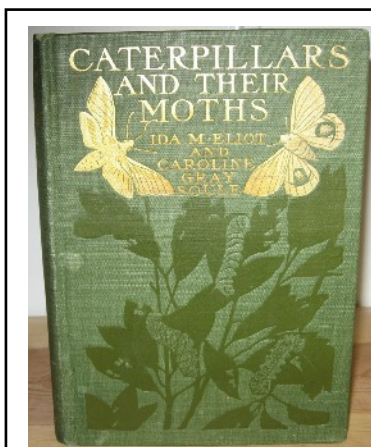
One Soule woman-on-the-move was Elizabeth Soule, who was featured in the blurb “Soules in the News” on page 8 of Vol. 1, No. 2 of *Soule Newsletter*, printed in April 1967.

Elizabeth Soule, Cambridge Scholar, is joining the English faculty of Fordham University. She will be with “a separate experimental college in which about 30 students a year will live and study for 3 years with a dozen faculty members and devise their own curriculum,” (TIME 1/20/67)

Col. John Soule wrote a “Who Was Who” feature that was included in that same issue of the newsletter. In it, he listed Soule family members who had been included in the *Who’s Who in America* directory and were now deceased. Among these were some noteworthy Soule women including:

Caroline Augusta (White) Soule (1844-1903) widow of Rev. Henry Birdsall Soule (1815-1852) of New York and Scotland; author and Universalist minister. (See image to the right.)

Caroline Gray Soule (1855-1920) of Massachusetts; entomologist, ornithologist and author. (See her book below.)



Caterpillars and Their Moths
authored by
Caroline Gray Soule
and Ida M. Eliot.
Published in 1902.



Caroline Augusta Soule is regarded as the first Universalist missionary. Image provided by Harvardquarelibrary.org

Minnie (Meserve) Soule (1856-1936) wife of Charles Loren Soule, of Massachusetts and New York; noted medium and deliverer of spirit messages.

Annah May Soule (1859-1905) of Michigan; professor of American History and political economy and noted authority on Michigan state boundary lines.

Continued on [next page](#)

Exceptional Soule Women continued...

Ella Frances (Haskell) Soule, wife of Frank Waldo Soule (1861-1904) of Massachusetts; author of children's books, including *Sunday Afternoons for the Children: A Mother Book*, published in 1900.

Bertha Louise Soule (1863-1956) of Maine; last surviving and outstanding alumnus of Colby College Class of 1885, Latin teacher and author of Latin textbooks, biographies of Colby College faculty members and works of poetry.



Col. John Soule researched and reported on these outstanding Soule women in history. In 1967, as a founding member of Soule Kindred in America and its leading historian and genealogist, he set the tone for future Soule kindred to respect and admire the female heroes in the family. Col. Soule included these pioneering women professionals in his list of "Who Was Who," organized by birth year, interspersed and indistinguishable from the men's entries.

Of course, his own wife, Adelia Rosasco Soule, was an accomplished writer (see her reprinted article and learn more about her on [page 4](#)). We have a long history of strong, pioneering women, starting with our first mother, Mary Beckett.

**If you would like to research and write about Soule women, whether from long ago like the ladies above, or more modern-day Soule women, please contact Soule Kindred Newsletter Editor, Kathleen Kingman: kathleenkingman@yahoo.com.*

GENERAL SOCIETY OF MAYFLOWER DESCENDANTS HISTORIC SITES TOUR SEPTEMBER 19 - OCTOBER 2, 2017



The General Society of Mayflower Descendants is offering an extended historic sites tour in the fall of 2017. Cities and towns visited will be: London, Canterbury, Dorking, Southampton, Plymouth, Droitwich, Shipton, Wrexham, Wales, Babworth, Gainsborough, Doncaster, Immingham, Boston, Fishtoft, Peterborough area, Henlow, Cambridge, Fenstanton, Redenhall, Delfshaven, Leiden, and Amsterdam.

Detailed information can be found on [page 12](#).

**It's less than a year away...
time to start planning your trip to Plymouth!**

**The SKA 50th Reunion
September 8-10, 2017**

(or Sept.8-13 if you also plan to join in the GSMD Congress)



The headstone honoring George Soule, located in the Miles Standish Burial Ground in Duxbury, MA

The Soule Kindred Reunion Committee is gearing up for our big 50th Anniversary Reunion, September 8-10, 2017, in Plymouth/Duxbury, MA! The General Society of Mayflower Descendants (GSMD) is also holding its General Congress meeting from September 8-13, 2017, in Plymouth, so the Soule Kindred Reunion will interface with that event. Other Pilgrim family groups will be doing the same.

Some of our planned events include: a lunch or dinner for Soule cousins to have an opportunity to meet and interact; a presentation by researchers Caleb Johnson and Simon Neal, who have been tirelessly searching for links to George and Mary's families; sharing information about our DNA project; and a trip to Duxbury to tour the area where George and Mary settled.

Tours to places of interest like Plimoth Plan-

tation and Plymouth Rock will be offered, as well as GSMD-sponsored activities.

So, put the Soule Kindred 50th Anniversary Reunion on your calendar, tell your boss you need that time off, and let your kids' schools know your children/grandchildren will not be there for those days!

Watch for more reunion information on our SKA website, FB page and Twitter.



Plymouth Rock

For more information, please contact Sara Soule-Chapman at kirbychap@msn.com.

Historic Sites Tour Information continued...

INCLUSIONS AND BOOKING INFORMATION

PRICING: \$3,737.00 per person, double occupancy, land only

SINGLE SUPPLEMENT: \$784.00 per person

DEPOSIT: \$250.00 per person, non-refundable

AIR TRANSPORTATION: Flight will be confirmed and guaranteed upon receipt of \$300.00 per person air deposit

TRAVEL INSURANCE: Optional, but strongly recommended. Ask for details.

INCLUDED IN YOUR VACATION PRICE:

TOUR DIRECTOR: The services of a professional, multilingual Tour Director will be provided throughout.

MEALS: 13 Continental Breakfasts, 1 Lunch, 11 Dinners

QUALITY HOTELS: Pricing based on the following hotels; subject to availability:

London – Similar to Novotel London West or Kensington Close

Southampton – Similar to Jurys Inn

Plymouth – Similar to Jurys Inn

Wrexham – Similar to Ramada Plaza

Doncaster – Similar to Park Inn

Peterborough – Similar to Holiday Inn

Ipswich – Similar to Novotel

Leiden – Similar to Holiday Inn Leiden

GROUND TRANSPORTATION: Motorcoaches are fully air-conditioned everywhere while touring. No use of the motorcoach other than as specified in the itinerary. One group airport transfer on arrival and departure.

SIGHTSEEING: Sightseeing as outlined in the itinerary with inside visits (including admission charges) and special features shown in UPPER CASE in the tour description. Sightseeing with local guides where applicable.

ITINERARY: (B) = Breakfast (L) = Lunch (D) = Dinner

Day 1 – 19 Sept (Tue) – Arrival in London, England

Welcome to London! Upon clearing customs, meet your Tour Director for a group transfer to the hotel. Time to rest and relax at the hotel, or to start exploring London on your own, before experiencing a TASTE OF LONDON. This guided evening excursion includes a 3-course dinner with wine and beer at a traditional London pub followed by a narrated cruise on the River Thames, viewing some of the capital's most beautiful illuminated sights. (D)

Day 2 – 20 Sept (Wed) – London

Early morning sightseeing with a Local Guide includes all the famous landmarks: the Houses of Parliament and Big Ben beside the River Thames, Westminster Abbey, Prime Minister's Downing Street, Piccadilly Circus, and a visit to BUCKINGHAM PALACE AND APARTMENTS, and visit the MAYFLOWER PUB, where you will have a late lunch. It was near this pub that the Pilgrim Fathers set sail aboard the Mayflower to Southampton. Just across the street you may want to see St. Mary Rotherhithe Church. Captain Christopher Jones, Master of the Ship, lived in Rotherhithe; his children were baptized at St. Mary's. His body was buried in the churchyard, but the exact site is unknown. Next visit SOUTHWARK CATHEDRAL, the site of early Separatist worship. Time is allowed in the cathedral shop to browse for books on Separatist and Rotherhithe history. (B, L)

Day 3 – 21 Sept (Thu) — London - Canterbury - Dorking – Southampton

Travel to Canterbury, where James Chilton, the oldest Mayflower passenger, was born. Visit CANTERBURY CATHEDRAL, England's Mother Church. In Dorking, drive past William Mullin's house on West Street. It is the only known surviving home of a Pilgrim Father. Then, continue to Southampton to visit MAYFLOWER PARK and the MAYFLOWER MEMORIAL to the Pilgrim Fathers. The ships Mayflower and Speedwell met here to continue on to the New World. Overnight in Southampton. (B, D)

Day 4 – 22 Sept (Fri) Southampton - Plymouth

Journey to Dartmouth, the second port of the ships when the Speedwell began to leak. See the Mayflower Memorial Plaque at Bayard's Cove and take some free time for shopping and lunch. In Plymouth, visit the Mayflower Memorial, Mayflower Steps, Sutton Harbour Jetty and the Barbican Area. (B, D) Note – The hotel in Plymouth is subject to availability. Exeter and Torquay are potential alternatives.

Continued on [next page](#)

Historic Sites Tour Information continued...

Day 5 – 23 Sept (Sat) – Plymouth – Droitwich - Shipton – Wrexham, Wales

Today drive to Droitwich (birthplace of Edward Winslow), where time is allowed to see some of the sites associated with the Pilgrims. Continue to Shipton, birthplace of the More children. Visit SHIPTON HALL and ST. JAMES CHURCH. Finally, settle in for a comfortable drive to Wrexham where you will overnight. (B, D) Note - Shipton Hall is subject to availability. Hotel in Wrexham is subject to availability. Liverpool will be the potential alternative.

Day 6 – 24 Sept (Sun) – Wrexham. Full Day Excursion to Wales

A day dedicated to the mountainous splendor of North Wales. After a stop in pretty Betws-y-Coed, drive over spectacular Llanberis Pass and through Snowdonia National Park to Caernarvon, where the castle saw the investiture of Charles as Prince of Wales. Then, follow the coast road via the walled town of Conway. Board your PRIVATE BARGE and enjoy unforgettable views of the Dee valley as you sail over the spectacular Pont-cysyllte Aqueduct which carries the Llangollen canal, while your guide explains this 1007 feet long masterpiece of British Victorian engineering. Return to the hotel. Dinner is included tonight. (B, D)

Day 7 – 25 Sept (Mon) – Wrexham – Babworth - Gainsborough - Doncaster

Sightseeing today includes a visit to ALL SAINTS CHURCH in Babworth where you can also walk part of the Pilgrim's Way. In Gainsborough visit the OLD HALL. Time is allowed for an independently-arranged visit to Scrooby Manor House. Proceed to Doncaster, for your overnight stay. (B, D) Note – Sightseeing today is dependent on amount of time spent at Scrooby Manor House. The visit has been arranged independently.

Day 8 – 26 Sept (Tue) – Doncaster – Immingham – Boston - Fishtoft – Peterborough area

Depart today for Immingham. Next to Boston to visit the GUILDHALL where the Pilgrim Fathers were imprisoned in 1607. We will also visit Fishtoft. Overnight in Peterborough area. (B, D)

Day 09 – 27 Sept (Wed) – Peterborough area – Excursion to Henlow, Cambridge and Fenstanton Visit Fenstanton, site of Mayflower passengers. Continue to Henlow. Overnight in Peterborough area. (B, D)

Day 10 – 28 Sept (Thu) – Peterborough area - Redenhall – Ipswich/Colchester area

Depart today for Redenhall; see the new Fuller Society Plaque at ST MARY'S CHURCH. Overnight in the Ipswich/Colchester area. (B, D)

Day 11 – 29 Sept (Fri) Harwich to Hook of Holland via ferry, Delfshaven - Leiden

Travel to Harwich for the FERRY to the Hook of Holland. Meet your Tour Director for a drive to Delfshaven. On the 22 of July, 1620, from here the ship Speedwell left with the Pilgrim Fathers. Visit the PILGRIM FATHERS CHURCH, where they held their last service. (Address: Aelbrechtskolk, 20. Voorhaven, 3024 RE Rotterdam) Overnight in the Leiden area. (B, D)

Note: As clients will be boarding and disembarking the ferry as foot passengers (the British motor coach and tour director service ends at the ferry), portage is not available. Clients will be responsible for their luggage. The group will need to make a very early start in order to catch the ferry (approx. 6 a.m. or earlier depending on the final location of the hotel). Breakfast will therefore unlikely be "full" and will probably be either a simple continental buffet or boxed for clients to take to their rooms the previous evening.

Note: British Tour Director services end at Harwich on Day 11. Continental Tour Director will meet group upon disembarkation at the Hook of Holland.

Day 12 – 30 Sept (Sat) – Leiden

Morning sightseeing of Amsterdam with a Local Guide. Enjoy a CANAL CRUISE along gabled merchant houses and humpback drawbridges reminiscent of the Golden Age, but also the strikingly modern buildings of a young city with plans for the future. Next visit the fabulous RIJSMUSEUM with priceless paintings by Rembrandt and other Dutch masters. This afternoon, walk through the BEGIJNHOF. Visit the SCOTTISH (ENGLISH REFORMED) CHURCH. See the HOLLAND PILGRIM MEMORIAL PLAQUE. (B)

Day 13 – 01 Oct (Sun) - Leiden

Today, focus on Leiden. Visit ST. PETER'S CHURCH to see the Pastor John Robinson Plaque. Nearby is the Jan Peijnhof where the house of John Robinson was located. Visit the LEIDEN AMERICAN PILGRIM MUSEUM. Tonight enjoy a typical hearty Dutch meal in an authentic 16th century establishment. Located in the heart of the city, it is renowned for its eight different dining rooms, each offering dinners a cozy, relaxed atmosphere. (B,D) Note: The inside visit to St. Peter's Church is subject to availability. The church is used for various functions throughout the year.

Day 14 – 02 Oct (Mon) – Leiden - Departure from Amsterdam

A group transfer is provided to the Amsterdam airport for your flight home today. (B)

Reservation form on [next page](#)

Historic Sites Tour Reservation Form

RESERVATION FORM

*checks made payable to "Plymouth Travel"

7 S. Park Ave, Plymouth, MA 02360

plymouthtravel@aol.com

Enclosed is a deposit of: _____ To reserve _____ place(s).

Check one: _____ Single _____ Double _____ Triple _____

Cabin Category Preference: _____

Legal name as appears on passport (for travel within the United States legal name as appears on your government issued ID).

Additional names should be included on a separate sheet of paper.

1. _____
Title First Middle Last DOB Citizenship

2. _____
Title First Middle Last DOB Citizenship

Street Address City State Zip
() ()

Home Phone Work Phone E-mail

Card Holder Name: _____

Last 4 Digits on Card: _____ Are you interested in travel insurance? Yes _____ No _____

Support Soule Kindred with your tax-deductible contribution.

To help fund the 2017 scholarship and/or the research into George and Mary (Beckett) Soule's origins, and/or the general operations of Soule Kindred, please return this form with your check.

Yes, I would like to support scholarships with a tax-deductible donation of \$ _____

Yes, I would like to support research with a tax-deductible donation of \$ _____

Yes, I would like to support general operations with a tax-deductible donation of \$ _____

Your Name _____

Address _____

City State ZIP _____

Phone _____

Make check payable to

Soule Kindred in America

c/o Russ Francis

13450 SW Lancewood St.

Beaverton, OR 97008

Thank you for your support!

Soule Kindred in America, Inc. is a 501(c)(3) nonprofit organization. Your contribution is tax-deductible to the extent allowed by law.

This and That

A Sampling of 2017 Genealogical/Family History Conferences/Events

Rootstech 2017

<https://www.rootstech.org/>

It's time to use technology to discover your roots.

February 8-11: Salt Lake City, UT

National Genealogical Society 2017 Family History Conference

<http://conference.ngsgenealogy.org/>

Energize your research and sharpen your family history skills.

May 10-13: Raleigh, NC

Southern California Genealogy Jamboree 2017

<http://genealogyjamboree.com/>

Hunting your heritage.

June 9-11: Los Angeles, CA

NEHGS Edinburgh, Scotland, Research Tour

<http://shop.americanancestors.org/products/edinburgh-scotland-research-tour?pass-through=true>

Have you ever dreamed of visiting Edinburgh to research your Scottish ancestors?

June 18-25: Edinburgh, Scotland

2017 International Germanic Genealogy Conference

<http://ggsmn.org/cpage.php?pt=83>

Connections: International.

Cultural. Personal

July 28-30: Minneapolis, MN

NEHGS Come Home to New England Research Program

<http://shop.americanancestors.org/products/come-home-to-new-england-2017?pass-through=true>

Come home to Boston and work closely with NEHGS staff to advance your research.

August 9-13: Boston, MA

Give the Gift of Membership

If you're looking for something unique for friends and family this holiday season, consider a Soule Kindred gift membership. It's a gift that keeps giving all year, supporting our work while informing your loved ones about their family history. To purchase a membership as a gift or for yourself, simply visit soulekindred.org.

Memberships are essential to our present and future as we honor the past.



Give a Donation

Support the preservation of Soule heritage for future generations. Go to: soulekindred.org, click on Donate, and choose the Colonel John Soule Research and Publication Fund, Soule Kindred Memorial Scholarship Fund or the General Support Fund.

(Paper form can be found on [p. 14](#))



Call for Submissions

Have you come across some interesting stories in your genealogical research?

Do you have a story you have written to share with the family?

Share your stories with your larger Soule family!

Send ideas to:
kathleenkingman@yahoo.com

Meet the Soule Kindred

Board of Directors

Officers

Helen A. Soulé &
Darrel Young
Co-Presidents

Sara Soule-Chapman
Secretary

Russ Francis
Treasurer



Directors

Helen A. Soulé
Jeanette Taylor
Robertta Wilkinson
Darrel Young
Deanna Lucas
Sara Soule-Chapman
Russ Francis
John S. Sims

Contact Information

General Information:

info@soulekindred.org

Biennial Reunion:

kirbychap@msn.com

Membership:

jeanettetaylor092@gmail.com

Newsletter Editor:

kathleenkingman@yahoo.com

Soule Kindred Family Tree Committee:

abt85750@comcast.net
judyhughes36@gmail.com

Volunteer:

helenasoule@gmail.com
barb7801@hctc.net

Soule Kindred in America, Inc.
1348 E. Vinedo Ln.
Tempe, AZ 85284-1667

Non-Profit Org.
U.S. POSTAGE PAID
NEW BRUNSWICK, NJ
PERMIT NO. 1826

**Save the Date for our 2017
Reunion!!!! September 8-10,
Plymouth/Duxbury, MA
Soule Kindred: 50 Years and
Going Strong!!!!**



Powder Point
(land owned by
George Soule),
Duxbury, MA